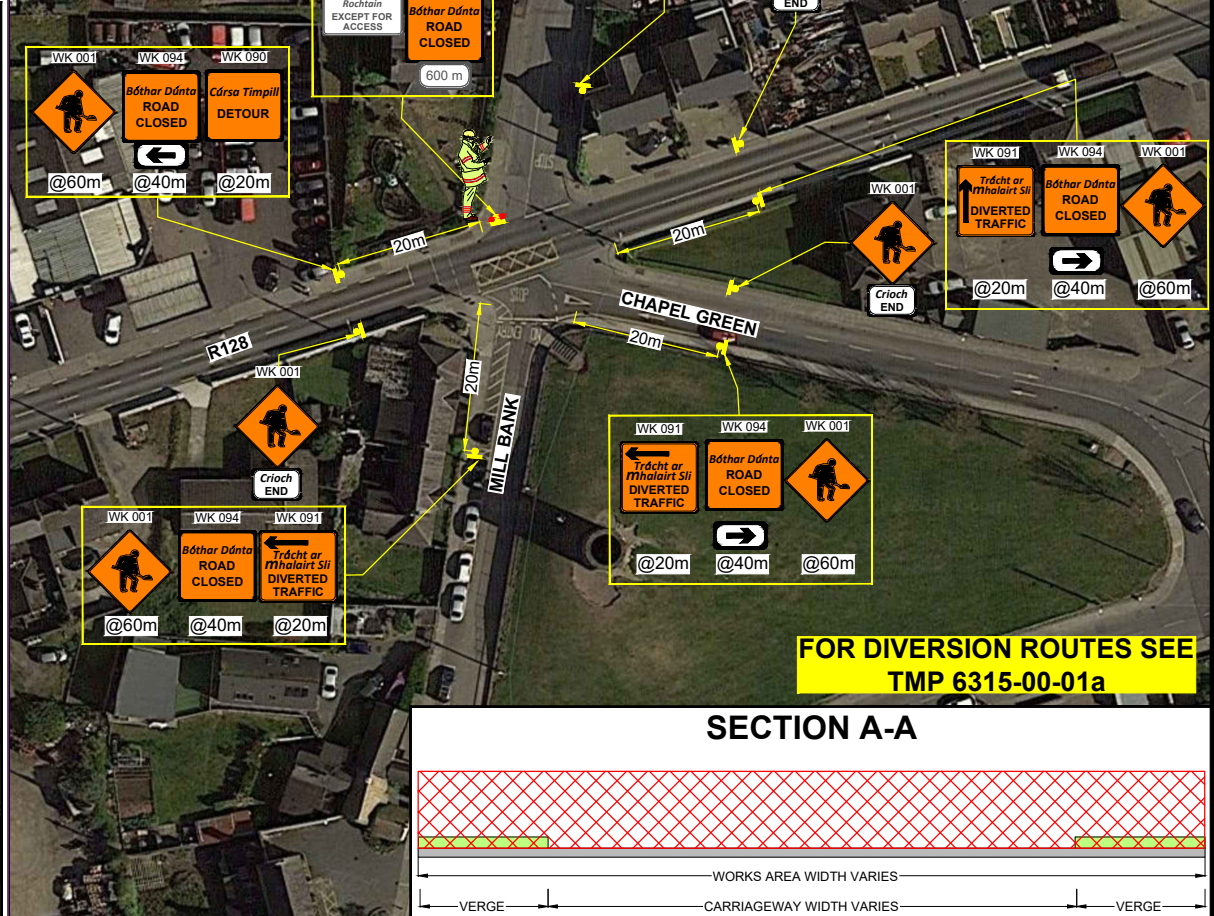
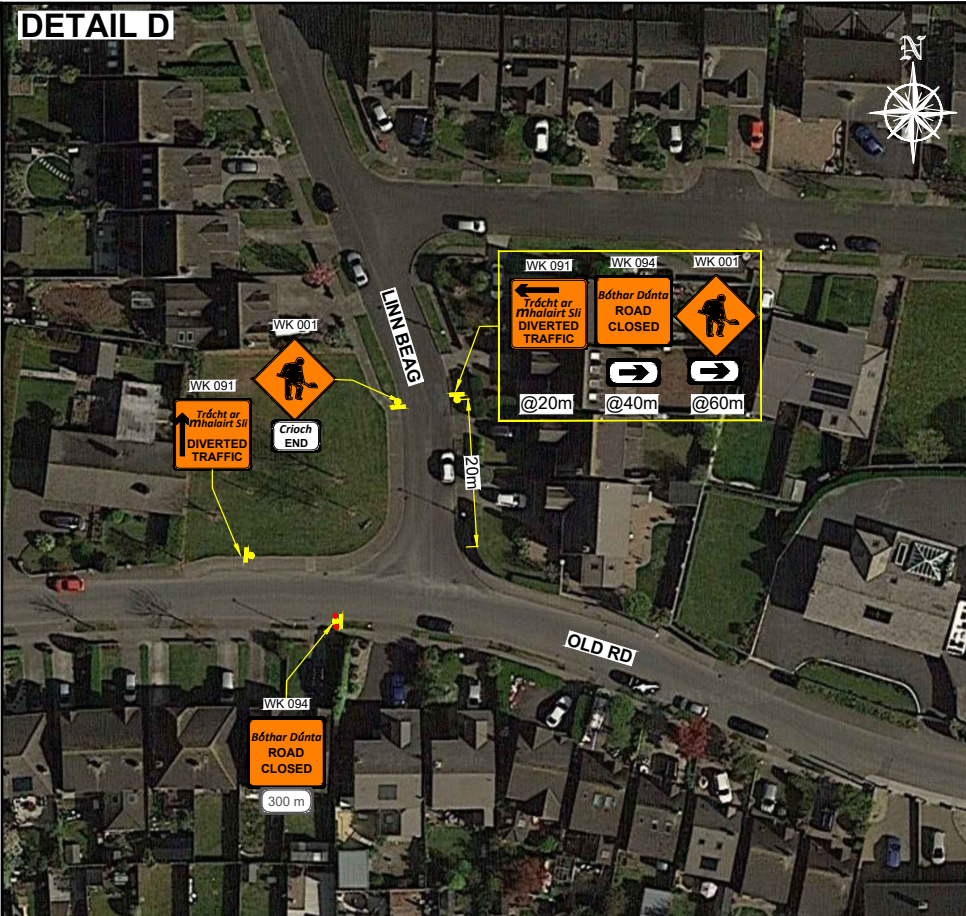
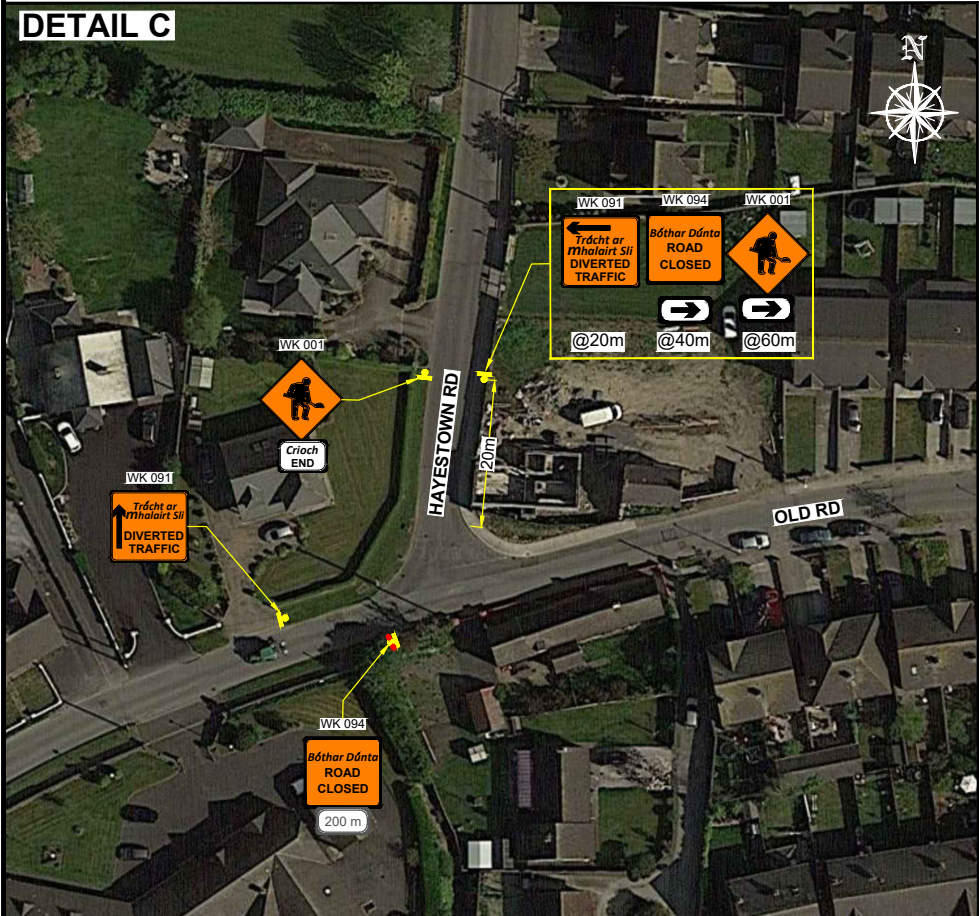
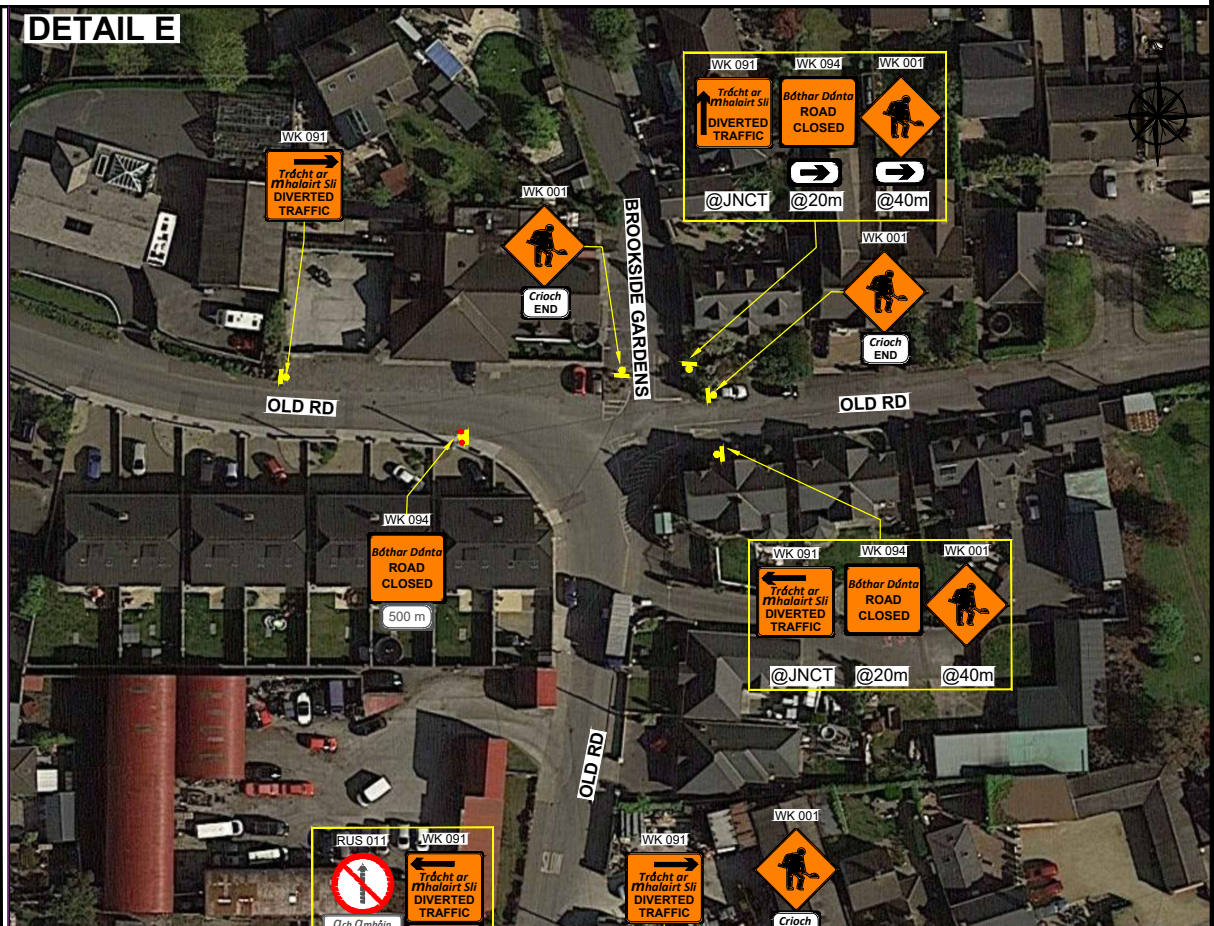
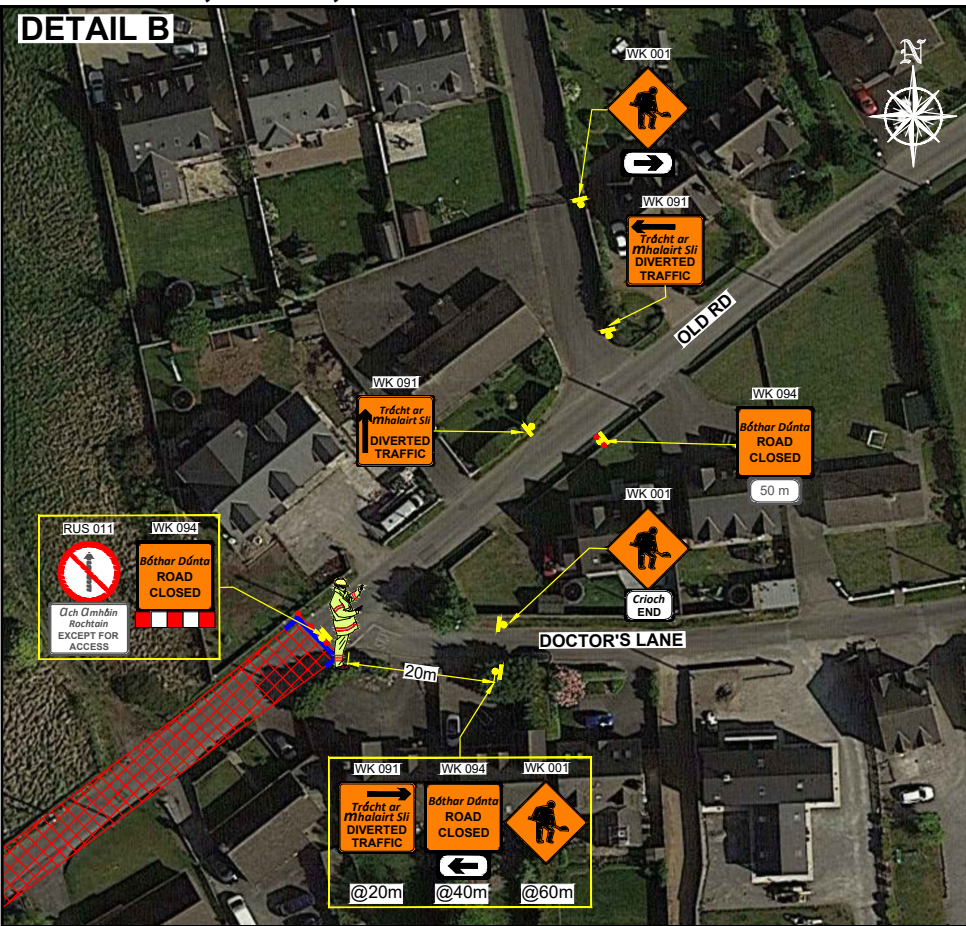
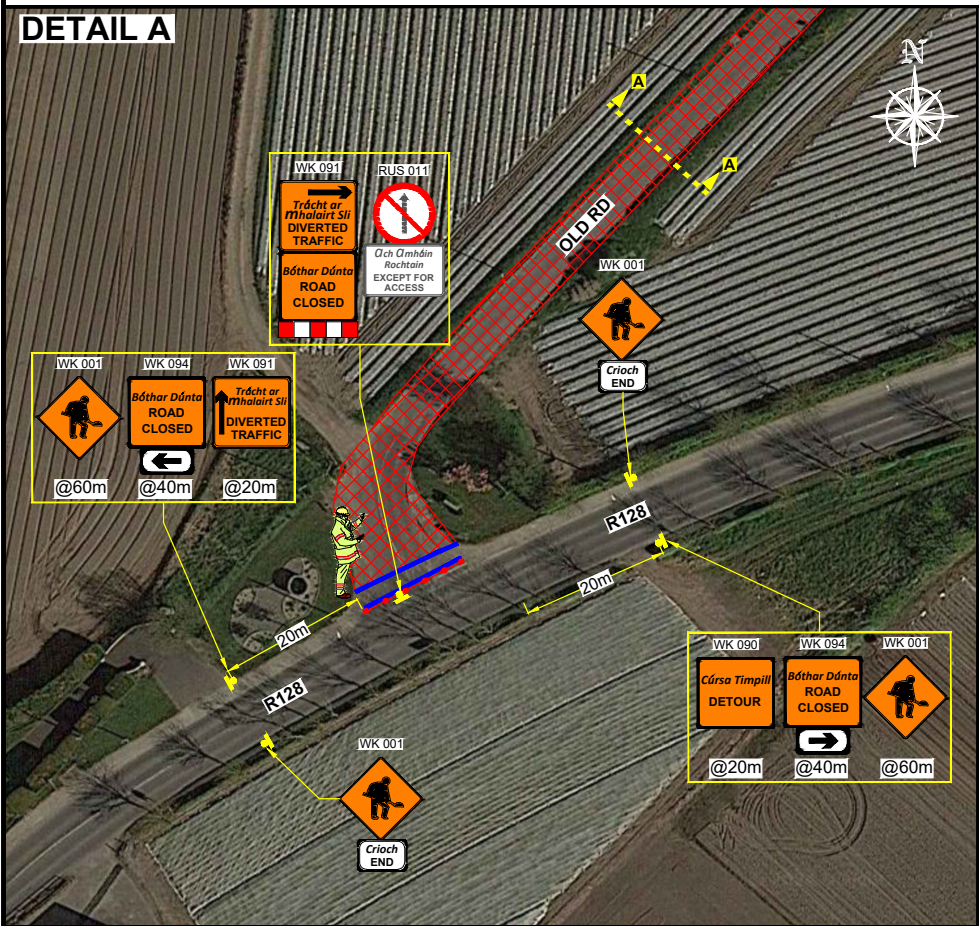
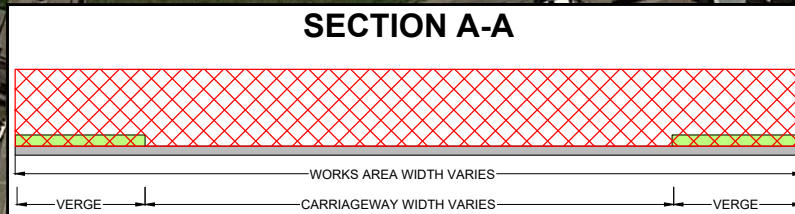


# OLD RD, RUSH, CO. DUBLIN - ROAD CLOSURE TM LAYOUT



FOR DIVERSION ROUTES SEE TMP 6315-00-01a



DESIGN PARAMETERS		SAFETY ZONE			TEMPORARY SIGNS			CONE SPACING AND SIZE			RATE OF TAPER		LAMP SPACING		TRAFFIC MANAGEMENT SYSTEM			LEGEND				
Road Lv(Sub)	Roadwork Type	Speed Limit (km/h)	Min. Lane Width (m)	Longitudinal (m)	Lateral (m)	Set Back (m)	Distance (m)	Number	Min. Size (mm)	Sign Visibility (m)	Longitudinal (m)	At Tapers	Min. Height (mm)	Taper at H/S (m)	Taper at Lane (m)	At Tapers	Longitudinal (m)	Method	Coned Area Length (m)	Max. Traffic Flow (veh/h)		
1 (iii)	A	50	3.00	5	0.5	-	20	2	600	50	3	3	750	1 in 5	1 in 5	6	6	Road Closure	n/a	n/a		<ul style="list-style-type: none"> <li>● - TRAFFIC CONES</li> <li>● - SIGN LOCATION</li> <li>▨ - WORKS AREA</li> <li>— - APPROX. 35m OF PEDESTRIAN BARRIER</li> </ul>

<p>1) ALL INFORMATION CONTAINED IN THIS DRAWING SHOULD BE CHECKED AND VERIFIED BY CONTRACTOR PRIOR TO ANY STAGE OF CONSTRUCTION.</p> <p>2) ALL WORKS ARE TO BE CARRIED OUT IN ACCORDANCE WITH LOCAL AUTHORITY REQUIREMENTS AND ARE TO BE INCLUDED IN THE SITE-SPECIFIC SAFETY &amp; HEALTH PLAN.</p> <p>3) CONTRACTOR TO CARRY OUT A SITE RISK ASSESSMENT PRIOR TO THE INSTALLATION OF ANY TRAFFIC MANAGEMENT PLAN TO ENSURE THAT CONDITIONS REFLECT THOSE CONSIDERED FOR DESIGN POST SUBMISSION.</p>		<p>4) CONTRACTOR SHALL BE RESPONSIBLE FOR THE PROVISION OF RAMP ACCESS AT ANY CHANGE IN ROAD SURFACE LEVEL WHERE TRAFFIC RUNS ON A TEMPORARY SURFACE.</p> <p>5) THIS TRAFFIC MANAGEMENT PLAN MAY ONLY BE IMPLEMENTED BY A TTOS WHO MUST CARRY OUT A RISK ASSESSMENT BEFORE IMPLEMENTATION. TTOS MUST BE IN POSSESSION OF CSCS CARD "SIGNING, LIGHTNING AND GUARDING AT ROAD WORKS" CONSTRUCTION REGULATIONS 2006.</p> <p>6) EXACT SIGNS POSITIONS TO BE AGREED ON SITE.</p> <p>7) ACCESS TO BE MAINTAINED TO ALL DWELLINGS / BUSINESSES AT ALL TIMES.</p>		<p>8) SITE INSPECTIONS AND MAINTENANCE OF THE TRAFFIC MANAGEMENT LAYOUT IS TO BE CONDUCTED ON A DAILY BASIS TO ENSURE THE SAFETY AND INTEGRITY OF THE DESIGN.</p> <p>9) ALL TEMPORARY FOOTWAYS MUST HAVE A GOOD QUALITY, EVEN SURFACE AND BE MAINTAINED FREE FROM OBSTRUCTION.</p> <p>10) WHERE A SITE-SPECIFIC SURVEY HAS NOT BEEN CARRIED OUT BY GKTM LTD., THE COMPANY DOES NOT ACCEPT THE APPOINTMENT AS TM DESIGNER FOR THE PROJECT. ANY TTMLD PRODUCED BY GKTM LTD IS FOR THE PRELIMINARY SAFETY PLAN ONLY AND MUST BE FURTHER DEVELOPED BY A TM DESIGNER APPOINTED BY THE MAIN CONTRACTOR FOR THE CONSTRUCTION PHASE.</p>		<p>10) PEDESTRIANS TO BE PROTECTED FROM WORKS AREA BY PEDESTRIAN BARRIER SYSTEM.</p> <p>11) TM OPERATIVES TO MAINTAIN CLOSURE, MARSHAL PEDESTRIANS AND INFORM DRIVERS ABOUT DIVERSION ROUTES.</p>	
---	--	---	--	--	--	---	--

<p>DESIGNED: BJ</p> <p>DRAWN: BJ</p> <p>VERIFIED: SS</p> <p>APPROVED: SS</p>		<p>SCALE: NTS</p> <p>DATE: 30-01-2024</p>		<p>PROJECT TITLE: OLD RD, RUSH, CO. DUBLIN</p> <p>DRAWING NAME: ROAD CLOSURE TM LAYOUT</p> <p>STAGE: CONSTRUCTION</p>		<p>CLIENT: GARY KEVILLE TRAFFIC MANAGEMENT LTD.</p> <p>Rosemount Business Park, Dublin 11, Co. Dublin, Ireland</p> <p>Tel: (+3531) 667 4322; Email: info@gktm.ie</p> <p>Visit us at: www.gktm.ie</p>		<p>DWG. No.: JC 6315-00-01</p> <p>REV: 0</p>	
--	--	---	--	---	--	--	--	--	--