



FINGAL LOCAL COMMUNITY DEVELOPMENT COMMITTEE ANNUAL REPORT 2016

**Comhairle Contae
Fhine Gall**
Fingal County
Council



LCDC
Coiste um Fhorbairt Pobail Áitiúil Fhine Gall
Fingal Local Community Development
Committee



CONTENTS

MESSAGE FROM THE CHAIR

CHIEF OFFICER STATEMENT

ONE

FINGAL LOCAL COMMUNITY
DEVELOPMENT COMMITTEE

PAGE 9

TWO

FINGAL LOCAL ECONOMIC &
COMMUNITY PLAN 2016 – 2021

PAGE 19

THREE

SOCIAL INCLUSION & COMMUNITY
ACTIVATION PROGRAMME 2015-2017

PAGE 25

FOUR

RURAL DEVELOPMENT PROGRAMME
DUBLIN RURAL LEADER 2014-2020

PAGE 29

ABBREVIATIONS

ABBREVIATION	EXPLANATION
BAP	Blanchardstown Area Partnership
DAHRRGA	Department of Arts, Heritage, Rural, Regional & Gaeltacht Affairs
DEZ	Dublin Enterprise Zone
DHPCLG	Department of Housing, Planning, Community & Local Government
DLRCC	Dun Laoghaire Rathdown County Council
EETD	Economic Enterprise Tourism Development
ESOL	English for Speakers of Other Languages
FCC	Fingal County Council
FLP	Fingal Leader Partnership
IP	Implementing Partner
LAG	Local Action Group
LCDC	Local Community Development Committee
LDS	Local Development Strategy
LEADER	'Liason Entre Actions de Developpement de l'Economie Rurale' 'Links between the rural economy and development actions'
LECP	Local Economic and Community Plan
LES	Local Employment Services
NEETS	Not in Education Employment or Training
PI	Programme Implementer
PPN	Public Participation Network
SDCC	South Dublin County Council
SICAP	Social Inclusion & Community Activation Programme

This report has been prepared in accordance with Section 128B (1)(i) Local Government Act 2001, as Inserted by the Local Government Reform Act 2014, which states that one of the functions of a Local Community Development Committee is: *"to prepare, adopt and submit to the local authority a report in relation to the performance of its functions during the year immediately preceding the year in which the report is submitted"*.



MESSAGE FROM THE CHAIR

Welcome to the 2016 Annual Report of the Fingal Local Community Development Committee. Amongst its features are the launch of Local Economic and Community Plans, the development and submission of the Dublin Rural LEADER Local Development Strategy, and the first full year of operation of the Social Inclusion & Community Activation Programme in the county.

I took up the position as Chair with the knowledge that since its establishment the LCDC had accomplished a good deal in a relatively short space of time. In this regard I would like to acknowledge chairs and members past and present for their time and efforts in ensuring the work of the Committee and its affiliate structures, including the Dublin Rural Local Action Group, maintained the highest of standards in their approach to fulfilling their roles and functions.

I wish to acknowledge the work of our SICAP Programme Implementer, Blanchardstown Area Partnership and LEADER Implementing Partner, Fingal LEADER Partnership. Both have undergone considerable changes whilst making a significant contribution to local economic and community development in the county.

The Public Participation Network has also played a commendable role in the work of the LCDC to date. The development of a representative citizen participation structure is challenging, people who give of their time freely for the betterment of Fingal are deserving of our thanks and gratitude.

I would also like to acknowledge the commitment of the staff in the Economic, Enterprise and Tourism Development Directorate of Fingal County Council for the support they have given to members of the LCDC in navigating their way through the significant change and responsibilities associated with these still new structures. Without their efforts, much of the progress achieved to date would not have been possible.

Finally the Fingal LCDC is well positioned to contribute significant added value to the potential of Fingal through the implementation of local economic, social and community initiatives which promote inclusive growth and improved quality of life in the County. I undertake to ensure the respectful and collaborative way of working which has been cultivated to date will continue.

Dr Pat O'Connor

Chair, Fingal Local Community Development Committee & Dublin Rural LEADER Local Action Group. Head of School of Humanities, Institute of Technology Blanchardstown.



CHIEF OFFICER STATEMENT

The Fingal LCDC met all of its requirements in 2016. The LCDC and the Dublin Rural Local Action Group met nine times during this period. Attendance levels averaged 75%, with consistently high levels of participation and engagement as standard.

In 2016:

- Dr. Pat O'Connor was elected Chair of the Fingal LCDC and Dublin Rural Local Action Group.
- Brid Walsh was elected Vice Chair of the Fingal LCDC and LCDC SICAP Oversight Committee.
- Cllr Paula Donovan (South Dublin LCDC) was elected Chair of the LEADER Monitoring Group.
- Des O'Sullivan, Peter Foran, Padraic McMahon, Mary McKenna and Terry McCabe retired or resigned from the LCDC.
- Cllr. Brian McDonagh, Adeline O'Brien, Chris O'Malley, Úna Caffery, Lawrance Ward and Ellen O'Dea joined the LCDC in 2016 / 2017.

The LCDC has been diligent, supportive and where necessary directive in fulfilling its contractual responsibilities in overseeing the implementation of the Social Inclusion & Community Activation Programme (SICAP). Five meetings took place of the LCDC Social Inclusion Community Activation Programme (SICAP) Oversight Committee.

The membership of the Dublin Rural Local Action Group (LAG) was reduced from 27 to 17 members in 2016. The LAG uniquely comprises nominees from, South Dublin, Dun Laoghaire and Fingal LCDC, the Dublin Rural Sub Regional area. The LAG

provides the governance and oversight required for the significant task of implementing the Local Development Strategy for LEADER in the Dublin Sub Region. The LAG has fulfilled all requirements to date including the development and submission of a robust Local Development Strategy. A LEADER Monitoring Sub Committee has been established to oversee and support the operation of a service level agreement between the Implementing Partner, LAG and the Financial Partner, Fingal County Council.

The LECP was launched nationally and locally in September 2016. The responsibility for arranging for the community elements implementation is the function of the LCDC. In time, the integrated statutory Economic and Community Plan will provide the template thorough which all-strategic and operational plans in the county are aligned.

Agendas and minutes of LCDC meetings are available on the Fingal County Council website and meetings are held in accordance with Standing Orders established by the Committee.

Breffni O'Rourke

Chief Officer, Fingal Local Community Development Committee & Dublin Rural LEADER Local Action Group



SECTION 1

Fingal Local Community Development Committee

SECTION 1

Fingal Local Community Development Committee

“Local government will be the main vehicle of governance and public service at local level - leading economic, social and community development, delivering efficient and good value services, and representing citizens and local communities effectively and accountably”.

Putting People First, Action Programme for Effective Local Government, 2012.

The Local Government Reform Act 2014, gives legislative effect to the commitments in ‘Putting People First’ including the establishment of LCDCs in each local authority administrative area for the purposes of developing, coordinating and implementing a coherent and integrated approach to local and community development.



Members of the LCDC (L-R): Adaku Ezeudo, Brid Walsh, Alice Davis, Tony Lambert

A. LCDC FUNCTIONS	B. PERFORMANCE OF FUNCTIONS
<ul style="list-style-type: none"> • Prepare and arrange for the implementation of the Community element of a 6 year Local Economic and Community Plan. 	<ul style="list-style-type: none"> • Social inclusion, environmental, recreational, cultural or community development.
<ul style="list-style-type: none"> • Coordinate, manage and oversee the development of local and community development programmes. 	<ul style="list-style-type: none"> • Enterprise and economic functions arising from local and community development activity.
<ul style="list-style-type: none"> • Review, monitor and revise actions and strategies set out to achieve the objectives of the Local Community & Economic Plan. 	
<ul style="list-style-type: none"> • Improve the coordination of all public funded local and community development programmes in the administrative area. 	
C. GUIDING PRINCIPLES	
<ul style="list-style-type: none"> • A clear focus on Social Inclusion, marginalised communities and the marginalised within communities. 	
<ul style="list-style-type: none"> • Promotion of enterprise, employment development, training and education as a key element in supporting sustainable communities. 	
<ul style="list-style-type: none"> • Planning and programme implementation that makes the best use of available resources for citizens and communities. 	

*Section 128B of the Local Government Act 2001 sets out the functions of the LCDCs.

**The functions of a local authority regarding promoting the interests of communities as set out in Section 66 of the 2001 Local Government Act, delegated to LCDCs,*. section 128(2).

LCDC Member Profiles 2016-2017



Members of the LCDC

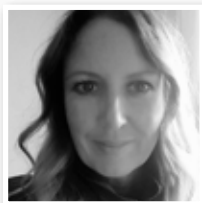
Back row (L-R): Tony Lambert, Ellen O’Dea, Adeline O’Brien, Brid Walsh, Adaku Ezeudo, Maire O’Brien, Oisín Geoghegan, Ed Hearne, Jeff Murphy, Laurence Ward, Una Cafferey, Cllr Brian McDonagh, Anthony Brennan

Front row (L-R): Alice Davis, Cllr Tony Murphy, Breffni O’Rourke, Dr. Pat O’Connor, Siobhan Lawlor, Tom Hahey



ALICE DAVIS

Alice Davis is an active Community Development worker and has been involved in Balbriggan Meals on Wheels for more than 10 years. Working as a trainer with Lir Anti Racism Training & Education programme, she is registered with the Teaching Council of Ireland. She is a Board member of Balbriggan Meals on Wheels and Balbriggan Enterprise Development Group and the Community Council. Alice has spent a number of years working in development projects in Africa and has worked on South Inner City Development Association, Dublin as a community worker.



BRID WALSH

Brid Walsh is currently the Coordinator of the North Dublin Regional Drug & Alcohol Task Force, having previously coordinated the Blanchardstown Local Drug & Alcohol Task Force for 5 years. Brid has a particular interest in the social care field and has decades of experience of working with marginalised groups in the Fingal area in previous roles including as a Mediator, Rehabilitation Worker and Project Worker. Brid has various 3rd level qualifications in counselling and rehabilitation and in previous years completed a M.Sc. in Social Science in Trinity College.



CLLR. TONY MURPHY

Tony Murphy is a craftsman goldsmith and first time councillor in Fingal County Council representing the Balbriggan Ward. He has been in business in Balbriggan for more than 30 years and during that time has been involved in commercial organisations, community initiatives and sport. Relevant roles and interests: Former President and current executive member of Balbriggan Chamber of Commerce; Chair Balbriggan Creative and Cultural Quarter; Director Balbriggan Enterprise Development Group Ltd; Member of O’ Dwyer’s GAA and Glebe North FC.



ED HEARNE

Ed Hearne joined Fingal County Council from professional services firm EY (Ernst & Young), where he was a Senior Manager and led the firm's Economics Advisory team. Ed has a wide range of experience in the public and private sectors with expertise in strategy and public policy formulation, economic analysis and investment appraisal. Ed holds undergraduate and postgraduate degrees in Economics from University College Dublin and Trinity College respectively. Ed previously worked in public expenditure management, strategy development and economic policy analysis in the Departments of Finance and Public Expenditure & reform.



ADAKU EZEUDO

Adaku Ezeudo is the Founder of i-Smile International, a Migrant's Women Network to promote social inclusion and intercultural understanding and collaboration among women in Dublin 15. She is a social entrepreneur, an intercultural consultant and an advocate for social justice. Her primary degree is in Accounting, she holds a University Certificate in Women's Studies with UCD and a Master's degree in Development Studies with Kimmage Development Studies Centre. She sits on the board of Co-operative Housing Ireland. Adaku is passionate about inspiring and empowering others to live their best self.



ANTHONY BRENNAN

Anthony Brennan is Chairperson of Woodland Park Residents Association and board member of Rush Community Council. Anthony has always liked to be involved with community groups, working to be part of the Community and working with the Local Authority. He is on the Fingal Public Participation Network and a member of the LCDC. Anthony says the more the community group's work together, the more we get for each other.



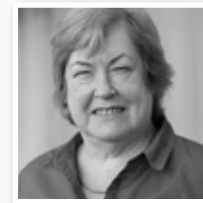
JEFF MURPHY

Jeff Murphy began his career as a psychiatric nurse. As a member of his union and Chairman for 3 years he attended and presented at a number of delegate conferences. Jeff was Health & Safety rep and helped set up a Critical Incident Stress debriefing service for HSE. He became interested in media and community development. Following retirement in 2012 he became a volunteer for Phoenix FM. Jeff is committed to community broadcasting, regularly co presenting and producing the D15 Today programme and outside broadcasts. Jeff is on the Board of Phoenix FM and Board member of The Community Radio forum of Ireland.



CLLR NATALIE TREACY

Natalie Treacy is an elected Sinn Féin Councillor for the Castleknock area. She attended Blakestown Community School and attained a diploma in Supervisory Management from NCI. She is a Representative on the Safer Blanchardstown Policing Forum and serves on the Board of Management at Mountview & Fortlawn Community Campus, and works full time in Sinn Féin's constituency office in Corduff. She was appointed to the LCDC and is looks forward to representing all groups in her area. Natalie is particularly interested in working to resolve the housing crisis in Dublin 15.



MAIRE O'BRIEN

Maire O'Brien has a M.Sc. in Environmental Science. Maire has been nominated to represent Environmental issues on the LCDC. She is from Portmarnock and is involved with the Portmarnock Community Association and Beach Committee and An Taisce Coastcare Group. She is a lecturer with the Open University and was formerly in Environmental Control and Public Health. Maire has a keen interest in most things environmental, especially water, both fresh and salt water.



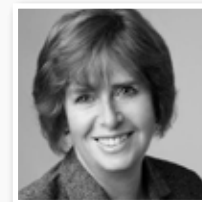
OISÍN GEOGHEGAN

Oisín Geoghegan took up the position of Head of Enterprise in Fingal County Council in April 2014, having served 14 years as Chief Executive at the (now dissolved) Fingal County Enterprise Board. A Master of Business Studies graduate of University College Dublin, Oisín previously held positions of Export Sales and Marketing Manager for an Irish manufacturing company and subsequently Business Manager (Ireland) of a Scandinavian manufacturer of industrial equipment for the food processing sector.



DR. PAT O'CONNOR

Pat O'Connor is Head of School of Humanities at the Institute of Technology Blanchardstown (ITB). Pat has been involved in education for 30 years and has extensive experience in teaching in Further and Higher education. Pat recently completed a doctorate in education at the University of Manchester and holds degrees from Trinity College Dublin and Dublin City University. Pat's research interests extend to accounting and higher education and he has had wide ranging involvement in programme design and evaluation. Pat's community engagement includes Chair of the Board of Management of St Patrick's Junior National School, Corduff and coach with Hartstown Huntstown Football Club.



SIOBHAN LAWLOR

Siobhán Lawlor is the Divisional Manager for the Department of Social Protection. Her primary responsibility is the delivery of supports and services to 22,000 jobseekers in the Dublin North Division through six offices with over 300 staff reporting to her. She has over 25 years of experience and operational practice in the design and delivery of welfare policies and services, with knowledge and experience of child and family policy, social insurance and welfare legislation, payment and financial services, procurement and contracting and customer service. She studied in the Institute of Public Administration and is currently studying for a Master of Science in Innovation Management in the Public Service with Letterkenny Institute of Technology & University of Ulster.



TONY LAMBERT

Tony Lambert is Chief Executive Officer and Company Secretary of Fingal Dublin Chamber of Commerce (2000 – present) and Director of Chambers Ireland (2006 – present). He is also currently Director and Chairman of Fingal Tourism Limited and a member of the Institute of Directors; Dublin Airport Stakeholders Forum, Ireland Gateway to Europe, Dublin 15 Steering Group, Transports Users Policy Council, Chambers Ireland, Local Government Policy Council, Chambers Ireland; Public Affairs Forum, and the Fingal Local Community Development Committee.



CLLR BRIAN McDONAGH

Brian McDonagh is a Labour Councillor on Fingal County Council, first elected in 2014. Brian started work as a lifeguard and swimming teacher and then worked in factories and farms as a labourer, before moving into a sales career in the media and IT industry. He is a past pupil of Portmarnock Community School and has recently been appointed to the board of management of Portmarnock and Malahide Community Schools. Brian lives in Balgriffin and has a keen interest in planning and environmental issues as well as the arts.

LCDC New Member Profiles 2017



ADELINE O'BRIEN

Graduated from Trinity College Dublin with a BSc. Management. She worked in Business Development & Marketing in the private and not for profit sector. Previous roles include Development Director (Cork Opera House) to Director of the Fundraising Institute of Ireland and CEO of an Education & Training facility for at risk young people and their families in Dublin 10. Adeline was a founding Director of the Cherry Orchard Regeneration Board, a member of the Cherry Orchard Development Council, and a founding member of the Dublin 10 Restorative Practice steering group. Having commenced an MSc. in Work & Organisational Psychology / Behaviour (DCU) in 2012 Adeline worked as Consultant in the not for profit sector for registered charities and social enterprises. Adeline also provided support in terms of crisis management, operational quality audits and evaluations and established Aster Family Support. Adeline was appointed CEO of Blanchardstown Area Partnership in January 2017.



ELLEN O'DEA

Ellen O'Dea took up the position of Head of Service for Health and Wellbeing in the HSE Community Health Organisation Dublin North City and County in November 2016. Since 2002 she has worked in management roles within the HSE and her previous role was as General Manager for Primary Care and Disability Services in Dublin South Central Area. She has a particular interest in community participation in health and in previous roles set up community participation and engagement structures within the HSE. Ellen has a BSc (Hons) in Occupational Therapy, Diploma in Leadership and Quality in Healthcare and an MSc in Health Service Management.



UNA CAFFREY

Una is the coordinator of Fingal Children and Young Peoples Services Committee (FCYPSC). FCYPSC works to bring together a diverse group of agencies in Fingal to engage in joint planning and co-ordination of services for children and young people. Una brings to NDRDTF a wealth of experience of working in the community and voluntary sector having worked for Focus Ireland, Barnardos, Fingal County Childcare Committee to name a few. In her previous role Una coordinated the delivery of child protection training to early years professionals in Fingal. Una holds a Bachelor of Arts degree from Dublin Institute of Technology and a post grad in child protection from Trinity College Dublin.



CHRIS O'MALLEY

Chief Executive Officer of Fingal Leader Partnership. Previously (2015-2016) Pro Vice Chancellor, Business & Development, University of Worcester, strengthening the University's relations with employers to make it a more powerful catalyst for the development of private sector economy in Worcestershire. (2013-2015) Strategic Management Consultant, working with the Irish Human Rights Commission, Equality Authority, the Disability Federation of Ireland, the Dublin Airport Stakeholders Forum and Ballymun Partnership. (2007-2013) Pro Vice Chancellor, Regional & International Development, University of Wales, Newport, responsible for line management of the International, European, Marketing, PR, and Fund raising Departments and also Centre for Community and Lifelong Learning. (2002-2007) Chair of Ballymun Partnership and founder manager of NOrDubCo. (1994-2005) Director of Strategic Development, Dublin City University.



LAURENCE WARD

Laurence Ward is a dry stock farmer from Oldtown, North County Dublin and County Chairman of the Irish Farmers Association. He was until recently on the board of Fingal Leader Partnership. His passions are GAA and his job as a farmer.

LCDC Retired December 2016



DES O'SULLIVAN

Desmond O'Sullivan is the Project Manager of Jigsaw Dublin 15, a project of Headstrong, the National Centre for Youth Mental Health. He has experience in the Youth & Community sector and the Corporate sector and has a professional Youth & Community work qualification from NUI Maynooth. He was Programme Manager with Kildare Youth Services for seven years, which included managing Kildare Comhairle na nOg. He has worked in I.T. Management with AOL, Compaq and Hewlett Packard and conducted Community Arts programmes in Dublin's inner city.



MARY McKENNA

Mary McKenna is Chief Executive Officer of Fingal LEADER Partnership. She has provided project management and consultancy services in Central & Eastern Europe on World Bank and European Union projects in the areas of Active Labour Market Measures; Vocational Education and Training (VET) policy development and Small Medium Enterprise (SME) initiatives and programmes. Mary has a B.A. (Hons) Graduate of the National University of Ireland and is a Fellowship member of Association of Accounting Technicians U.K. She also holds an Occupational Guidance and Counselling qualification from Maynooth University and a Certificate in World Class Manufacturing from UCG.



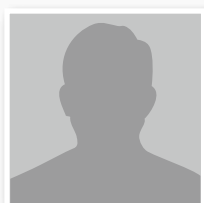
PADRAIC McMAHON

Padraic McMahon runs and owns Fieldstown Farm located in North County Dublin. This farm has been in the family since the 1700's. It has three enterprises; cattle, sheep and tillage and specialises in grass fed lamb and free range turkeys. He is passionate about farming and protection of the environment. He has had extensive involvement in farming and local Organisations; Padraic is former Chairperson of Dublin IFA, Former Chairperson of Fingal Farmers Group and; former member of Fingal Development Board. He sits on Flavours of Fingal Committee. He is a former Board Member of Dublin Leader Partnership.



TERRY McCABE

Terry McCabe is CEO of Blanchardstown Area Partnership and has worked in the company for 18 years. She has held management positions in the Community and Voluntary sector for 20 years. She has worked in the community sector for 23 years and is committed to community-led local development and to working closely with the local community to access services to meet their needs. She has responsibility for a number of key Government funded programmes including the Social Inclusion Community Activation Programme and oversees organisation with a staff of 160+. She holds an Honours Master's Degree in Management in the Non-Profit sector (DCU).

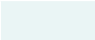



PETER FORAN

Peter Foran, Senior Manager with TUSLA Child and Family Services which was established on 1st January 2014 and is now the dedicated State agency responsible for improving wellbeing and outcomes for children. It represents the most comprehensive reform of child protection, early intervention and family support services ever undertaken in Ireland. Peter previously worked in the Health Services Executive in Primary Care and Addiction Services. Peter enjoys reading, hiking and most outdoor sports.

LCDC MEMBERS CATEGORY 2016

NAME	CATEGORY	ORGANISATION
Tony Murphy	Local Authority Member	Fingal County Council
Brian McDonagh	Local Authority Member	Fingal County Council
Natalie Treacy	Local Authority Member	Fingal County Council
Ed Hearne	Local Authority Official, Chief Executive's nominee	Fingal County Council
Oisín Geoghegan	Local Authority Official, Local Enterprise Office	Fingal County Council
Pat O'Connor (Chairperson)	State Agency, Higher Education Institute	Institute of Technology Blanchardstown
Siobhan Lawlor	State Agency, Dept. of Social Protection	Dept. of Social Protection
Peter Foran	State Agency, Child and Family Agency, TUSLA	Child and Family Agency, TUSLA
Anthony Brennan	Community Voluntary Interest	Fingal Public Participation Network
Jeff Murphy	Community Voluntary Interest	Fingal Public Participation Network
Alice Davis	Social Inclusion Interest	Fingal Public Participation Network
Adaku Ezeudo	Social Inclusion Interest	Fingal Public Participation Network
Maire O'Brien	Environmental Interest	Fingal Public Participation Network
Brid Walsh (Vice Chairperson)	Community Interest	North Dublin Regional Drugs & Alcohol Task Force
Terry McCabe	Local Development	Blanchardstown Area Partnership
Mary McKenna	Local Development	Fingal Leader Partnership
Padraic McMahon	Farming and Agriculture	The Irish Farmers Association
Tony Lambert	Business & Employers	Chambers Ireland
Des O'Sullivan	Community Interest	Headstrong, Fingal Jigsaw

	Public (statutory)
	Private (non-statutory)

RECORD OF ATTENDANCE LCDC MEETINGS 2016

	NAME	27.01.16	08.03.16	10.05.16	13.09.16	07.12.16
1	Cllr. Tony Murphy	√	×	√	√	√
2	Cllr. Natalie Treacy	×	√	√	√	√
3	Cllr. Brian McDonagh	√	√	√	√	×
4	Ed Hearne	√	√	√	√	×
5	Oisin Geoghegan	√	√	×	×	×
6	Pat O'Connor	√	√	√	√	√
7	Peter Foran*	×	√	√	×	-
8	Siobhan Lawlor	×	√	√	√	√
9	Anthony Brennan	√	√	√	√	√
10	Jeff Murphy	√	√	√	√	√
11	Brid Walsh	√	×	√	×	√
12	Alice Davis	√	√	×	√	√
13	Adaku Ezeudo	√	√	√	×	×
14	Padraic McMahon **	√	×	√	√	-
15	Maire O'Brien	√	√	√	√	√
16	Tony Lambert	×	×	√	×	√
17	Terry McCabe ****	√	√	√	√	√
18	Mary McKenna ***	√	√	√	√	-
19	Des O'Sullivan	√	√	√	×	√
Number attended		15/19 79%	15/19 79%	17/19 89%	13/19 68%	12/18 67%
		Total 78%				

Present	√
Apologies	X
Absent without apologies	○

* Peter Foran Retired Dec 16

**Padraic McMahon Retired Dec 16

***Mary McKenna Retired Dec 16

****Terry McCabe Retired Dec 16



SECTION 2

Fingal Local Economic & Community Plan 2016 – 2021

SECTION 2

Fingal Local Economic & Community Plan 2016 – 2021

The Local Government Reform Act 2014 provides for the development of a 6-year integrated Local Economic and Community Plan to promote and support the economic and social development of the local authority area.

Fingal LECP recognises that local and community development interventions need to support economic activity from the ground up, whilst helping to combat social exclusion and poverty, for example, through targeted interventions to improve education, training and employment opportunities within disadvantaged or marginalised communities. The LCDC has a key role arranging for the implementation of the community elements of the LECP as well as reviewing the economic elements of the plan.

The LECP provides a framework for strategic and operational plans in the county. For example the objectives and actions of SICAP & the LEADER programmes are closely aligned in the high level goals and objectives as set out in the Fingal LECP.

The plan has six key themes:

- 1 Enterprise and employment
- 2 Learning, training and working
- 3 Health, well-being and social inclusion
- 4 Leadership and community empowerment
- 5 Tourism, environment and heritage
- 6 Urban towns and rural communities



Welcoming the launch of the Plan, Fingal County Council Chief Executive Paul Reid said:

"The Local Economic & Community Plan seeks to advance the overarching purpose of local government as being 'to promote the wellbeing and quality of life of citizens and communities'. The plan includes actions that Fingal County Council will deliver directly and also actions led by or delivered in partnership with other economic and community development stakeholders. For the first time there is an integrated plan to help the local economy and communities achieve balanced growth."

Work is ongoing towards the implementation of the plan, with a number of flagship actions being achieved over the past year. There has been considerable progress in a number of community areas. In particular:

- a. Substantial progress has been registered on the library services elements of the plan.
- b. The supports and services delivered by the Social Inclusion and Community Activation Programme aligned more closely with the priorities identified in the LECP.

- d. Specific programmes supported and rolled out with traveller (yellow flag) and ethnic minority communities, Failte Isteach, projects funded through the Fingal Integration Fund (x6) in preparation for a county-wide Fingal Integration Strategy.

The table overleaf highlights a number of community actions discussed above and some other key highlights, followed by progress on shared economic and community actions and finally progress on some key economic actions



Minister Coveney and Acting Mayor Cllr, Kieran Dennison at the launch of the LECP, 20th September 2016.

Reflecting on the importance of local partnerships, Minister Coveney highlighted that:

"The Plans already show what can be achieved when people talk to each other and work in partnership. They are underpinned by extensive consultation with communities, community groups, business interests and other important stakeholders, and they show a great willingness by all involved to engage openly and constructively. "

THEME	HIGH- LEVEL GOAL	ACHIEVEMENT
Leadership & Community Empowerment	More coherent services that connect people and places, more active and empowered communities of place and interest.	<p>There were 461 groups registered with the PPN in 2016 and over 300 groups were supported through capacity building, mentoring and support.</p> <p>The publication of a user-friendly platform, which enables citizens and partners, compare, contrast and map multiple sets of statistics and data.</p> <p>The Community and Economic Monitor for Fingal County, will assist with a more evidence based approach to policy design.</p>
Health, Well-being & Social Inclusion	To increase participation in social, cultural and economic activities to improve, well-being and quality of life.	<p>There has been considerable progress in relation to commitments made by Fingal libraries, for example in conjunction with partners in early education and community settings, specialised collections have been developed for parents on parenting plus courses. Initiatives have also taken place through housebound and assistive technology services.</p> <p>The HSE's Healthy Ireland Strategy is being progressed at a local level. With regards Age Friendly initiatives 16 community facilities participated in specific initiatives.</p> <p>A number of Community First Responder Schemes have been developed and funding support given to same.</p>
Learning, Training and Working	To maximise job creation opportunities by activating the potential within local communities.	<p>The SICAP provider has assisted 180 people set up a new business and 205 jobs were created by new start-ups. Over 500 individuals participated on free life-long learning courses, 489 progressed along the education continuum and 124 young people were aided by education and job initiatives.</p> <p>Specific programmes were supported and rolled out with members of the travelling community (yellow flag) and ethnic minority communities. Other projects such as Failte Isteach have been funded through the Fingal Integration Fund (x6) and preparation is under-way for a county-wide Fingal Integration Strategy.</p>
Urban Towns and Rural Communities	To re-generate towns and villages and increase the resilience of the local economy.	<p>The Town and Village Renewal Scheme application process was completed and seven projects received funding to enhance public realm and footfall in the awarded towns and villages of Balrothery, Balscadden, Ballyboughal, Tyrrelstown, Rush, Donabate and Loughshinny (€380,000 in total).The town of Skerries achieved Age Friendly Status.</p> <p>The Swords Cultural Quarter was officially launched in November 2016.</p> <p>A retail shop front scheme for Balbriggan to help improve and regenerate the appearance of the main street area.</p> <p>The town of Skerries achieved Age Friendly Status.</p>

Enterprise and Employment	Increase economic activity and employment creation through innovation and collaboration.	A large programme of work was undertaken in the DEZ in 2016, including road resurfacing improvements to footpaths, public lighting and fencing and the development of content bank for a marketing strategy, including videos, blogs etc.
	To develop a communication and support structure for SME's and retail businesses.	Fingal LEO arranged and supported a number of business networks including Dublin Food Chain; Fingal Enterprising Women's Network; National Women's Enterprise Day; Ireland's Best Young Entrepreneur and "Fearless" – The Entrepreneur's Journey.
Tourism, Environment & Heritage	To protect and enhance the environment and heritage of Fingal.	Work has commenced on a cross departmental basis and with several communities in the county to support the development of heritage trails. This work will result in the establishment of a network of heritage trails in the county in the coming years.
	To create distinct visitor attractions by sensitively optimising the natural assets of the county, and building an enterprise and community infrastructure to drive and expand the visitor potential.	The 'Breath of Fresh Air' campaign continues to be leveraged leading to a significant investments and improvements in the programme of cultural events and tourism offerings. A LEADER Local Development Strategy (LDS) for the Dublin Rural region was developed and is being implemented; early calls for funding have related to training and capacity around strengthening the rural tourism offering.

	Community
	Community & Economic
	Economic

Regional

The Regional Assemblies' role in the LECP process is set out under Section 66c of the Local Government Act 2001, in particular Section 66c 2(c) and 3(c) which states that the consideration of an LECP by the Regional Assembly shall relate to its consistency with (i) the core strategy and the objectives of the development plan of the local authority concerned, (ii) any Regional Spatial and Economic Strategy or, as appropriate, Regional Planning Guidelines (RPGs) that may apply, and (iii) between the economic and community elements of the Plan. EMRA concluded in the statement that the Fingal Draft LECP satisfies the requirements in terms of consistency with the core strategy and the objectives of the Development Plan, consistency with the RPGs and the integration and coordination of the economic and community elements of the plan.

The Local Authority engaged with EMRA in a review of the LECP's in the EMRA region. The areas reviewed were:

- LECP Plan – Preparation and Development of Plan Content
- LECP Delivery – Formulating Actions and Implementation Plans
- Refining the Process – Key Lessons for Future Policy Cycles
- Post Adoption Evaluation – Monitoring and Review of Plans



SECTION 3

Social Inclusion & Community Activation Programme 2015-2017



SICAP

Social Inclusion &
Community Activation
Programme



SECTION 3

Social Inclusion Community & Activation Programme

The Social Inclusion Community Action Programme (SICAP) is a key intervention for the harder to reach groups. Delivery is being overseen and managed by the LCDC. SICAP aims to address poverty, long term unemployment and social exclusion through local engagement and partnerships between disadvantaged individuals, community organisations and public sector agencies.

The total budget for SICAP in Fingal in 2016 was €1,186,124 for which a contribution comes from the European Social Fund (ESF) Programme for Employability, Inclusion and Learning (PEIL) 2014-2020 and the Youth Employment Initiative.

The SICAP contract has three themes - Community Engagement, Education and Training, Employment and Enterprise.

The Programme Implementer, Blanchardstown Area Partnership (BAP) achieved both its two key performance indicators (KPIs) for 2016 and ensured that the programme and services were delivered within the financial parameters approved by the LCDC.

SICAP's target groups are:

- People living in disadvantaged areas
- People with disabilities
- Roma
- The unemployed (including those not on the Live Register)
- Low income workers/households
- Travellers
- Young unemployed people from disadvantaged areas
- Young people (aged 15-24) who are not in employment, education or training (NEETs)



(L-R): Brid Walsh (Vice Chair of LCDC & Chair of SICAP Oversight Committee), Pat O'Connor (Chair of LCDC), Breffni O'Rourke (Chief Officer), Ed Hearne (Director of Services, EETD), Adeline O'Brien (CEO of BAP)

Education and Training Services



Employment and Enterprise Services



SICAP 2016 HIGHLIGHTS



PEOPLE PARTICIPATED
IN A FREE LIFE-LONG
LEARNING COURSES



PEOPLE SET UP A
NEW BUSINESS



JOBS CREATED BY
NEW START UPS



OF PEOPLE WE
ASSISTED WERE
UNEMPLOYED

2016 #SICAP

Providing the building blocks
for local & community
development in Ireland



OF PEOPLE ASSISTED
FROM A JOBLESS
HOUSEHOLD



PROGRESSED
ALONG THE
EDUCATION
CONTINUUM



YOUNG PEOPLE
HELPED BY
EDUCATION & JOB
INITIATIVES



LOCAL COMMUNITY
GROUPS RECIEVED
ASSISTANCE

RECORD OF ATTENDANCE

LCDC SICAP OVERSIGHT SUB COMMITTEE MEETINGS 2016

	NAME	19.01.16	16.02.10	20.07.16	12.10.16	17.11.16
1	Oisín Geoghegan*	×	√	√	-	-
2	Pat O'Connor***	√ Chair	√ Chair	-	-	-
3	Peter Foran	√	×	√	×	-
4	Siobhan Lawlor	×	√	×	√	√
5	Tony Murphy	×	×	√	√	√
6	Pat Queenan****	√	√	√	√	×
7	Maire O'Brien**	√	√	-	-	-
8	Brid Walsh	√	√	√ Chair	√ Chair	√ Chair
9	Austin Wynne*****	√	√	×	√	√
10	Adaku Ezeudo	-	-	√	√	×
11	Jeff Murphy	-	-	√	×	√
Number attended		6/9 66%	7/9 77%	7/9 77%	6/8 75%	5/7 71%

Present	√
Apologies	X
Absent without apologies	○

*Oisín Geoghegan	Resigned in July 2016
Maire O'Brien & *Pat O'Connor	Replaced by Jeff Murphy & Adaku Ezeudo

SICAP Oversight Sub Committee Co-opted Members

****Pat Queenan	Community Section Fingal County Council (Non LCDC Member)
*****Austin Wynne	County Dublin, Education Training Board (Non LCDC Member)



SECTION 4

Dublin Rural LEADER

2014-2020



Dublin Rural
LEADER
Growth, Sustainability & Inclusion

SECTION 4

Rural Development Programme – LEADER

Overview

The Dublin Rural Local Action Group (LAG) has been established to deliver the LEADER element of the Rural Development Programme for the period 2014-2020 in the Dublin rural region. The allocated fund represents €6.42 million and of this €4.83 million will be available for local projects in the region.

The LAG worked closely with the LEADER Implementing Partner, Fingal LEADER Partnership, on the delivery of a Local Development Strategy (LDS) for the Dublin Rural area 2014 - 2020. The LDS was designed using community led local development principles which incorporated an extensive consultative process. The LDS is aligned with the strategic objectives of the LECP 2016 - 2021.

The LAG area

The Dublin Rural LAG geographical area encompasses the rural areas which surround the city of Dublin on three sides and is comprised of rural parts of the local authorities of Fingal, Dun Laoghaire-Rathdown, and South Dublin, all within the County of Dublin.

A contract was signed between the Minister for Arts, Heritage and the Gaeltacht, the Local Action Group, Implementing Partner and Financial Partner on the 12th October 2016 for the delivery of the LEADER element of Ireland's Rural Development Programme 2014 – 2020.



Dr. Pat O'Connor, Chairperson of the Dublin Rural LEADER LAG, Chris Harmon, Chairperson of Fingal LEADER Partnership and Paul Reid, Chief Executive, Fingal County Council

Chief Executive, Paul Reid on welcoming the signing of the LEADER contract said that, “This €6.4 million funding has the potential to have a transformative impact on the economy and quality of life in Rural Dublin. From a Fingal perspective, it is very much welcome, especially considering the size and importance of the agricultural sector in the county. As Financial Partner for the Programme, Fingal County Council are looking forward to working closely with the Dublin Rural Local Action Group, the Fingal Leader Partnership, and our counterparts in the other local authorities to ensure that we maximize the benefits that will accrue from this funding. ”

In 2016 a schedule of information and project animation events took place across the Dublin Rural Sub Region . Specifically in Q4 two targeted calls were released. These were:

1. Strategic action 10.

Community Training, Animation and Capacity Building Programme to support vibrant towns in rural Dublin – funding available €30,000.

2. Strategic action 3.

Support for small scale product development, interpretation and marketing of rural Dublin’s unique Heritage and Cultural attractions to maximise potential arising from Fáilte Ireland’s – Dublin, ‘A Breath of Fresh Air’ initiative - funding available €210,000.

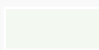

The LDS has three themes and eight sub themes which are indicated below.

THEME	SUB THEME	BUDGET (percent)
Economic Development, Enterprise Development and Job Creation	1. Rural Tourism 2. Enterprise Development 3. Rural Town	50%
Social Inclusion	4. Basic Services for “Hard to Reach” Communities 5. Rural Youth	25%
Rural Environment	6. Protection and sustainable Use of water resources 7. Protection and Improvement of Local Biodiversity 8. Development of Renewable Energy	25%

Source; Dublin Rural LEADER LDS Strategy, July 2016

Dublin Rural LEADER LOCAL ACTION GROUP (LAG) 2016

NAME	CATEGORY	ORGANISATION
Tony Murphy	Local Authority Member	Fingal, LCDC
Ed Hearne	Local Authority Official, Chief Executive's nominee	Fingal, LCDC
Oisín Geoghegan	Local Authority Official, Head of Local Enterprise Office	Fingal, LCDC
Dr Pat O'Connor (Chairperson)	State Agency, Higher Education Institute	Fingal, LCDC
Billy Coman	Local Authority Official, Chief Executive's Nominee	South Dublin, LCDC
Paula Donovan	Local Authority Member	South Dublin, LCDC
Peter O'Brien	Local Authority Member	Dun Laoghaire-Rathdown, LCDC
Alice Davis	Public Participation Network, Social Inclusion Interest	Fingal, LCDC
Maire O'Brien	Public Participation Network, Environmental Interest	Fingal, LCDC
Mary McKenna*	Local Development	Fingal, LCDC
Laurence Ward	Farming and Agriculture	Fingal, LCDC
Des O'Sullivan**	Community Interest	Fingal, LCDC
Larry O'Neill	Local Development	South Dublin, LCDC
Justin Byrne	Public Participation Network, Environmental Interest	South Dublin, LCDC
Prof. Mary Corcoran	Community Interest	South Dublin, LCDC
Cormac Shaw	Local Development	Dun Laoghaire-Rathdown, LCDC
Tom Kivlehan	Public Participation Network, Environment Interest	Dun Laoghaire-Rathdown, LCDC

	Public (statutory)
	Private (non-statutory)

*Mary McKenna	Replaced by Chris O'Malley, February 2017.
**Des O'Sullivan	Replaced by Adeline O'Brien, February 2017.

RECORD OF ATTENDANCE

LAG MONITORING COMMITTEE 2016 MEETINGS

	NAME	11.11.2016	24.11.2016
1	Cllr. Tony Murphy	×	√
2	Cllr. Paula Donovan	√	√
3	Billy Coman	√	√
4	Cormac Shaw	√	√
5	PENDING	-	-
6	PENDING	-	-
Number attended		3/4 75%	4/4 100%

Dr. Pat O'Connor, Chair of the Dublin Rural Local Action Group on welcoming the new round of LEADER funding up to 2020, commented that "funding is set to support a diverse range of projects across various themes including enterprise development, rural tourism, social inclusion and the environment."

Present	√
Apologies	×
Absent without apologies	○

 Public
 Private

CATEGORY MEMBERSHIP OF DUBLIN RURAL LEADER MONITORING GROUP 2016

NAME	CATEGORY	ORGANISATION
Tony Murphy	Local Authority Member	Fingal, LCDC
Billy Coman	Local Authority Official Chief Executive's Nominee	South Dublin, LCDC
Paula Donovan	Local Authority Member	South Dublin, LCDC
Cormac Shaw	Local Development	Dun-Laoghaire, LCDC
PENDING		
PENDING		

- Public (statutory)
- Private (non-statutory)



RECORD OF ATTENDANCE

DUBLIN RURAL LEADER LAG 2016 MEETINGS

	NAME	27.01.2016	21.06.2016	13.09.2016	07.12.2016
1	Cllr. Tony Murphy	√	√	√	√
2	Cllr. Paula Donovan	√	√	√	√
3	Cllr. Peter O'Brien	√	√	x	x
4	Alice Davis	√	x	√	√
5	Ed Hearne	√	√	√	√
6	Oisin Geoghegan	√	√	√	x
7	Dr. Pat O'Connor (Chair)	√	x	√	√
8	Billy Coman	√	x	√	√
9	Larry O'Neill	√	x	√	x
10	Cormac Shaw	√	x	√	√
11	Tom Kivlehan	√	√	x	√
12	Máire O'Brien	√	√	√	√
13	Padraic McMahon**	√	√	√	-
14	Des O'Sullivan	√	√	x	√
15	Mary McKenna***	√	√	√	-
16	Justin Byrne	x	√	○	√
17	Prof. Mary Corcoran	x	√	x	√
18	Brid Walsh*	√	-	-	-
19	Terry McCabe*	√	-	-	-
20	Cllr. Brian McDonagh*	√	-	-	-
21	Siobhan Lawlor*	x	-	-	-
22	Tony Lambert*	x	-	-	-
23	Peter Foran*	x	-	-	-
24	Adaku Ezeudo*	√	-	-	-
25	Anthony Brennan*	√	-	-	-
26	Jeff Murphy*	√	-	-	-
27	Cllr. Natalie Treacy*	x	-	-	-
	Number attended	21/27 78%	12/17 71%	12/17 71%	12/17 71%

Present	√
Apologies	X
Absent without apologies	○

*Reduction in LAG numbers from 27 to minimum of 16 as agreed on 27th Jan 2016

**Padraig McMahon resigned Nov 16

***Mary McKenna retired Nov 2016



Fingal County Council
Economic Enterprise & Tourism Development,
c/o Fingal LCDC, County Hall
Main Street, Swords,
Co. Dublin K67 X8Y2

Tel: (01) 8905000

E. lcddc@fingal.ie