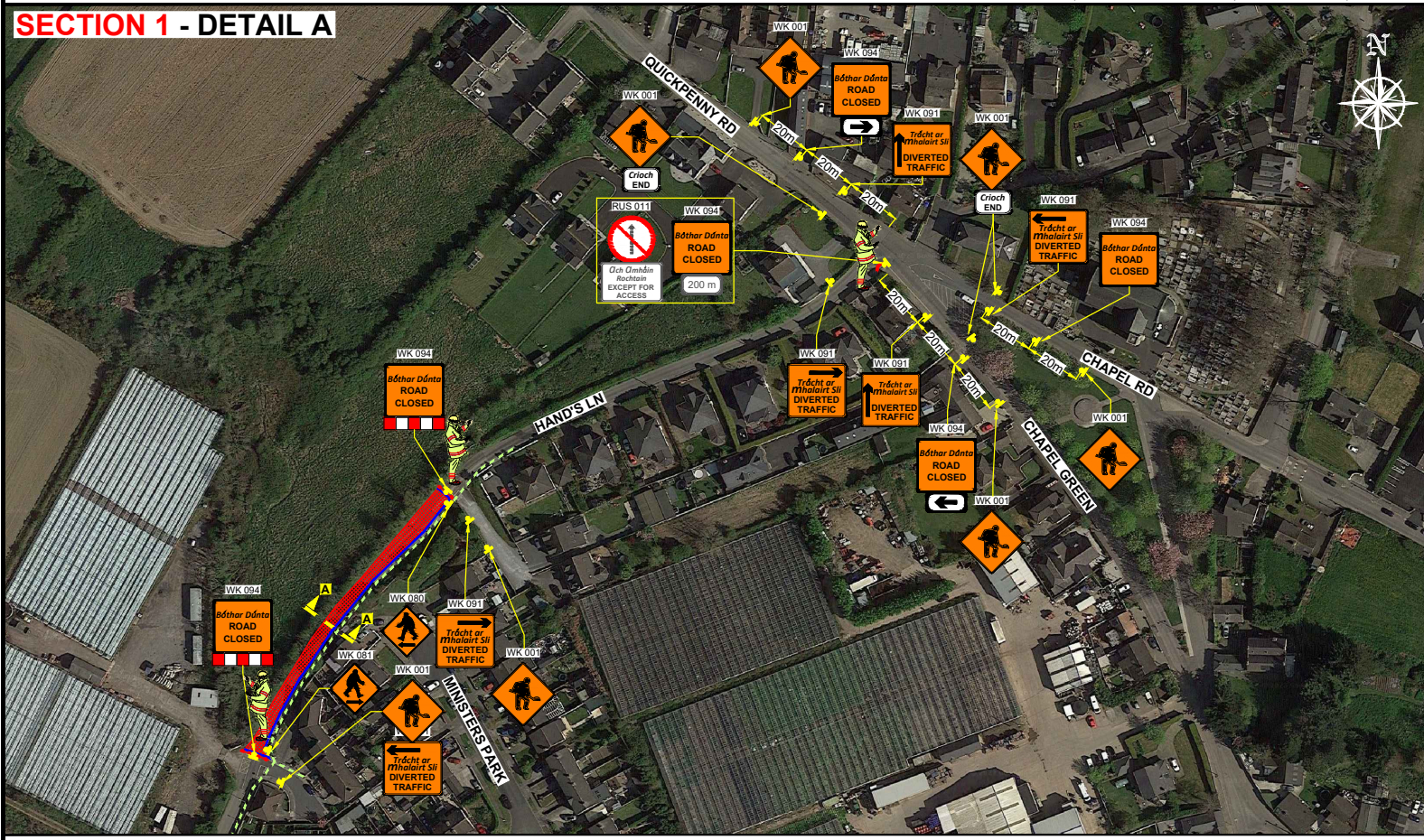
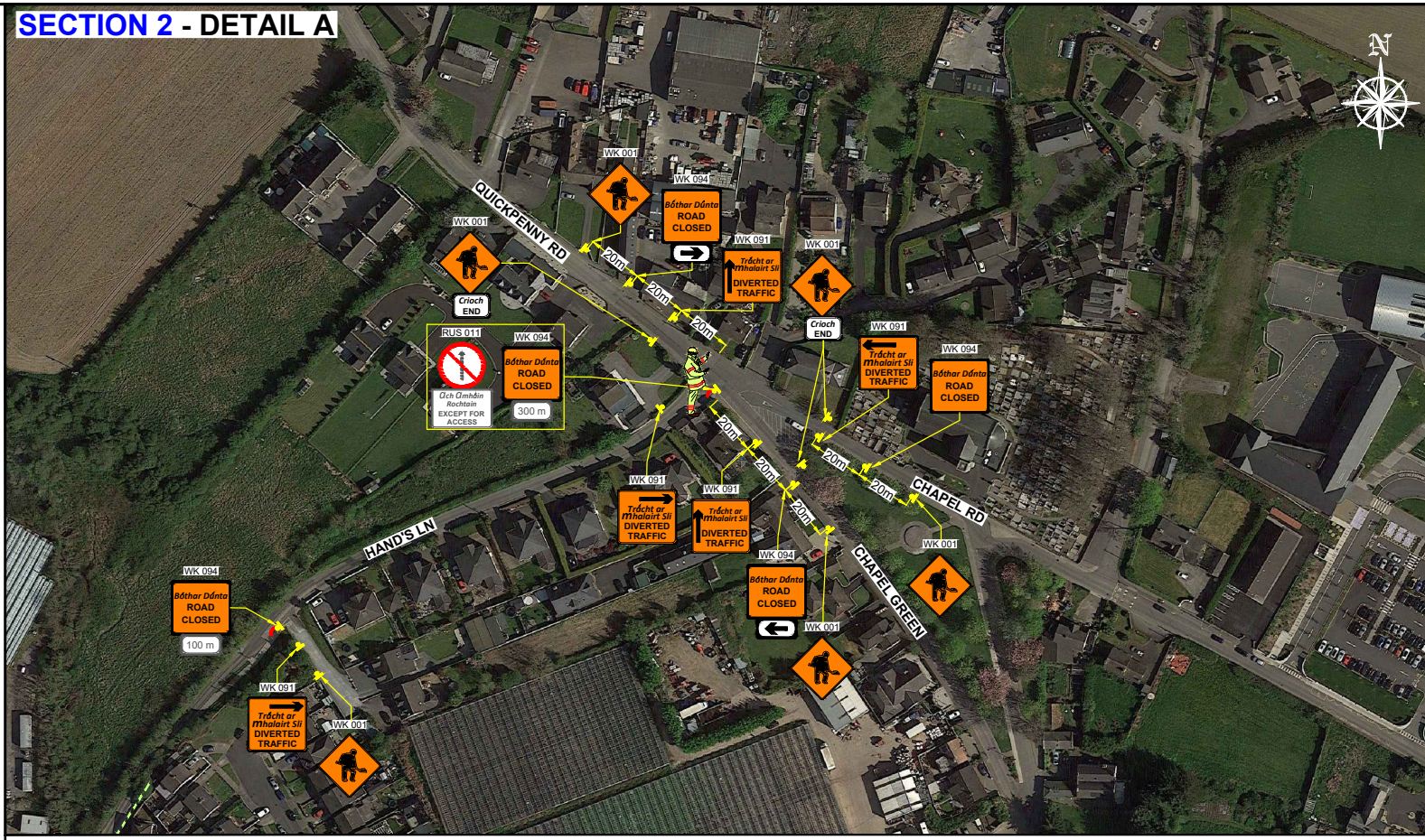


HAND'S LN, REGLES, LUSK, CO. DUBLIN - RESURFACING WORKS

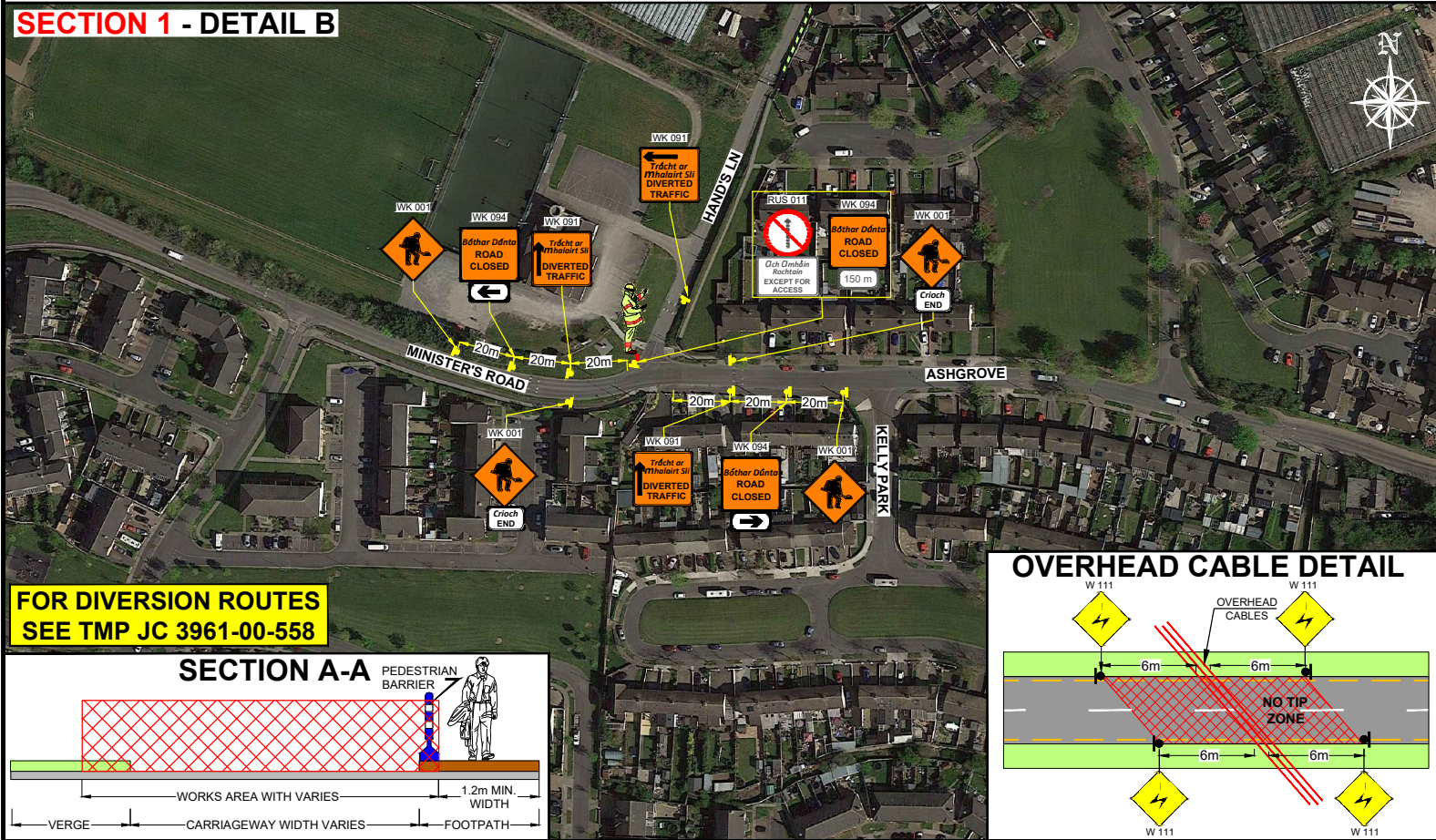
SECTION 1 - DETAIL A



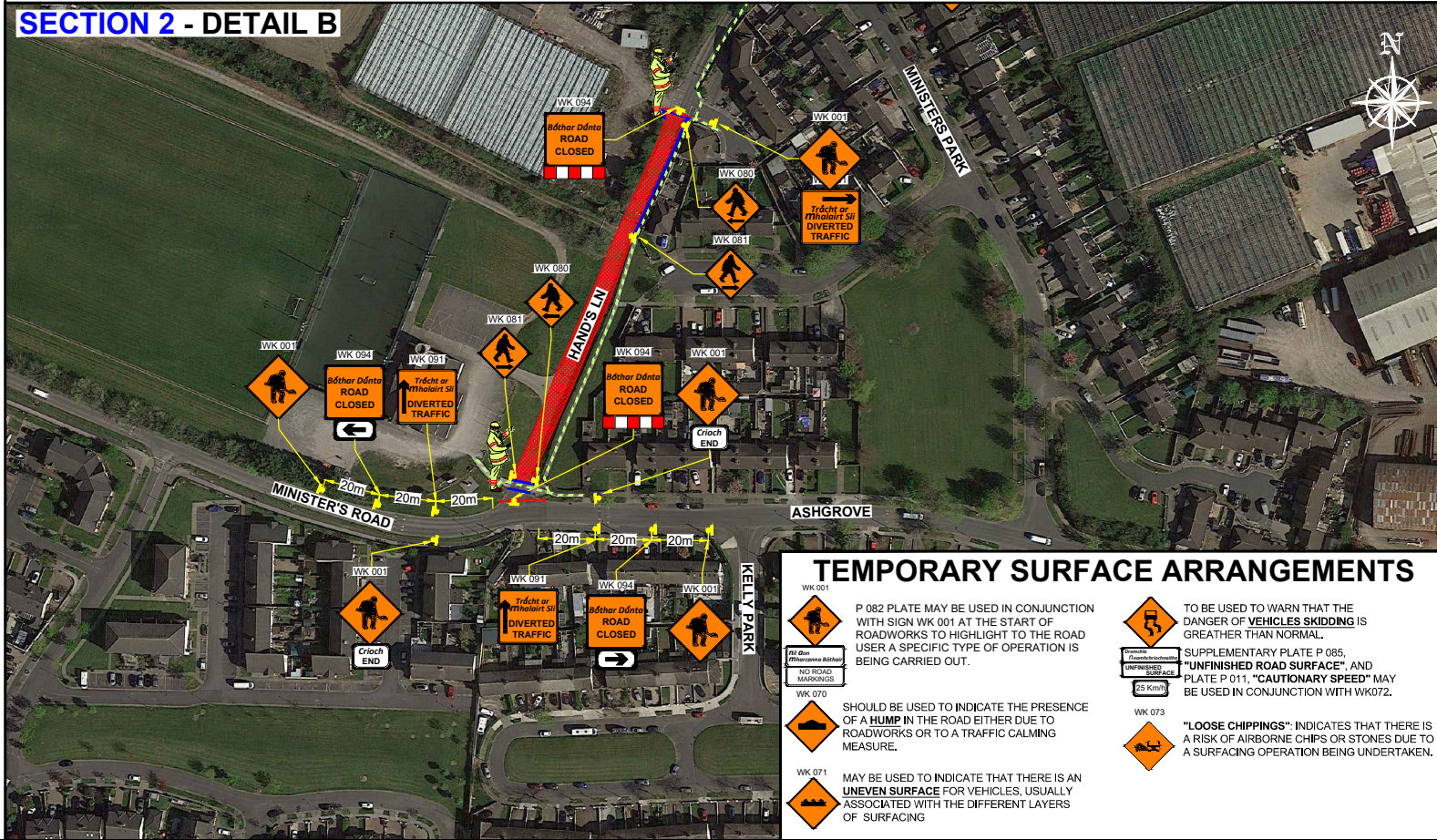
SECTION 2 - DETAIL A



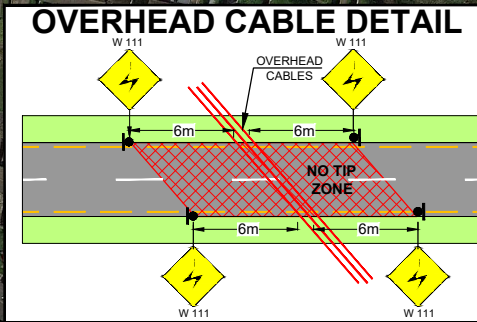
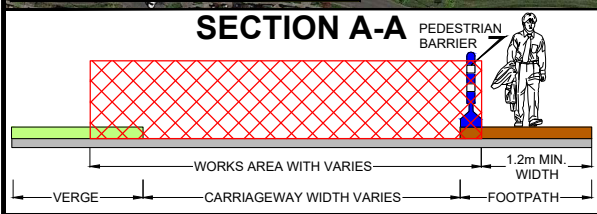
SECTION 1 - DETAIL B



SECTION 2 - DETAIL B



**FOR DIVERSION ROUTES
SEE TMP JC 3961-00-558**



TEMPORARY SURFACE ARRANGEMENTS

- Wk 001**: P 082 PLATE MAY BE USED IN CONJUNCTION WITH SIGN WK 001 AT THE START OF ROADWORKS OR TO A TRAFFIC CALMING MEASURE.
- Wk 070**: SHOULD BE USED TO INDICATE THE PRESENCE OF A HUMP IN THE ROAD EITHER DUE TO ROADWORKS OR TO A TRAFFIC CALMING MEASURE.
- Wk 071**: MAY BE USED TO INDICATE THAT THERE IS AN UNEVEN SURFACE FOR VEHICLES, USUALLY ASSOCIATED WITH THE DIFFERENT LAYERS OF SURFACING.
- Wk 072**: TO BE USED TO WARN THAT THE DANGER OF VEHICLES SKIDDING IS GREATER THAN NORMAL. SUPPLEMENTARY PLATE P 085, "UNFINISHED ROAD SURFACE", AND PLATE P 011, "CAUTIONARY SPEED" MAY BE USED IN CONJUNCTION WITH WK072.
- Wk 073**: "LOOSE CHIPPINGS": INDICATES THAT THERE IS A RISK OF AIRBORNE CHIPS OR STONES DUE TO A SURFACING OPERATION BEING UNDERTAKEN.

DESIGN PARAMETERS			SAFETY ZONE			TEMPORARY SIGNS			CONE SPACING AND SIZE			RATE OF TAPER		LAMP SPACING		TRAFFIC MANAGEMENT SYSTEM				
Road Lvl(Sub)	Roadworks Type	Speed Limit (km/h)	Min. Lane Width (m)	Longitudinal (m)	Lateral (m)	Set Back (m)	Distance (m)	Number	Min. Size (mm)	Sign Visibility (m)	Longitudinal (m)	At Tapers	Min. Height (mm)	Taper at H/S (m)	Taper at Lane (m)	At Tapers	Longitudinal (m)	Method	Coned Area Length (m)	Max. Traffic Flow (veh/h)
1 (iii)	A	50	3.00	5	0.5	-	20	2	600	50	3	3	750	1 in 5	1 in 5	6	6	Road Closure	n/a	n/a

LEGEND

- - TRAFFIC CONES
- - SIGN LOCATION
- ▨ - WORKS AREA
- - PEDESTRIAN BARRIER
- - PEDESTRIAN ROUTE

GARY KEVILLE TRAFFIC MANAGEMENT LTD.
Rosemount Business Park, Dublin 11, Co. Dublin, Ireland
Tel: (+3531) 667 4322; Email: info@gktm.ie; Visit us at: www.gktm.ie

CLIENT: **gaeltec utilities**

DESIGNED: BJ **SCALE:** NTS
DRAWN: BJ **PROJECT TITLE:** HAND'S LN, REGLES, LUSK, CO. DUBLIN
VERIFIED: SS **DATE:** 20-01-2024 **DRAWING NAME:** RESURFACING WORKS
APPROVED: SS **STAGE:** CONSTRUCTION **DWG. No.:** JC 3961-00-557 **REV:** 0

- NOTES:**
- ALL INFORMATION CONTAINED IN THIS DRAWING SHOULD BE CHECKED AND VERIFIED BY CONTRACTOR PRIOR TO ANY STAGE OF CONSTRUCTION.
 - ALL WORKS ARE TO BE CARRIED OUT IN ACCORDANCE WITH LOCAL AUTHORITY REQUIREMENTS AND ARE TO BE INCLUDED IN THE SITE-SPECIFIC SAFETY & HEALTH PLAN.
 - CONTRACTOR TO CARRY OUT A SITE RISK ASSESSMENT PRIOR TO THE INSTALLATION OF ANY TRAFFIC MANAGEMENT PLAN TO ENSURE THAT CONDITIONS REFLECT THOSE CONSIDERED FOR DESIGN POST SUBMISSION.
 - CONTRACTOR SHALL BE RESPONSIBLE FOR THE PROVISION OF RAMP ACCESS AT ANY CHANGE IN ROAD SURFACE LEVEL WHERE TRAFFIC RUNS ON A TEMPORARY SURFACE.
 - THIS TRAFFIC MANAGEMENT PLAN MAY ONLY BE IMPLEMENTED BY A TTOS WHO MUST CARRY OUT A RISK ASSESSMENT BEFORE IMPLEMENTATION. TTOS MUST BE IN POSSESSION OF CSCS CARD "SIGNING, LIGHTING AND GUARDING AT ROAD WORKS" CONSTRUCTION REGULATIONS 2006.
 - EXACT SIGNS POSITIONS TO BE AGREED ON SITE.
 - ACCESS TO BE MAINTAINED TO ALL DWELLINGS / BUSINESSES AT ALL TIMES.
 - SITE INSPECTIONS AND MAINTENANCE OF THE TRAFFIC MANAGEMENT LAYOUT IS TO BE CONDUCTED ON A DAILY BASIS TO ENSURE THE SAFETY AND INTEGRITY OF THE DESIGN.
 - ALL TEMPORARY FOOTWAYS MUST HAVE A GOOD QUALITY, EVEN SURFACE AND BE MAINTAINED FREE FROM OBSTRUCTION.
 - WHERE A SITE-SPECIFIC SURVEY HAS NOT BEEN CARRIED OUT BY GKTMLTD., THE COMPANY DOES NOT ACCEPT THE APPOINTMENT AS TM OPERATIVE FOR THE PROJECT. ANY TTMLD PRODUCED BY GKTMLTD. IS FOR THE PRELIMINARY SAFETY PLAN ONLY AND MUST BE FURTHER DEVELOPED BY A TM DESIGNER APPOINTED BY THE MAIN CONTRACTOR FOR THE CONSTRUCTION PHASE.
 - TM OPERATIVES TO MAINTAIN CLOSURE, MARSHAL PEDESTRIANS AND INFORM DRIVERS ABOUT DIVERSION ROUTES.

Copyright Notes:
THIS DRAWING IS THE PROPERTY OF GARY KEVILLE TRAFFIC MANAGEMENT. THE DESIGN INFORMATION CONTAINED HEREIN IS STRICTLY CONFIDENTIAL. THIS DOCUMENT IS NOT TO BE USED, REPRODUCED, DISCLOSED OR CIRCULATED IN WHOLE OR IN PART WITHOUT THE PRIOR WRITTEN CONSENT IN EACH INSTANCE OF GARY KEVILLE TRAFFIC MANAGEMENT. © GKTMLTD 2024