

Ballycoolin to Kingstown Trunk Watermain

July 2021

Irish Water is working to construct a new trunk watermain to serve parts of North Dublin benefitting residents, businesses, hospitals and agriculture.



Support economic and social development



Improve security of supply



Increase resilience of water supply

Introduction

Irish Water, working in partnership with Fingal County Council, is progressing with the Ballycoolin to Kingstown Trunk Watermain project to safeguard the water supply to homes and businesses across North Dublin. Roadbridge Limited has recently signed the contract to deliver these works on behalf of Irish Water.

The existing water supply network serving the North Dublin Region depends on a single large diameter concrete watermain built in the 1960's that connects Ballycoolin reservoir to Kingstown. The existing watermain is operating beyond its capacity, which results in low water pressure across the region during periods of peak demand. As the watermain is a critical piece of the supply network, it cannot be taken out of service to be upgraded.

The absence of additional infrastructure in the region prevents Irish Water from diverting available drinking water supplies to areas experiencing a loss of supply whilst emergency works (or planned improvement works) are underway on the existing watermain. Moreover, the current watermain does not enable future growth across the region.

For more information, news and updates please visit www.water.ie

The new additional trunk watermain will improve the security of supply and resilience of the network; enable long term social and economic development in the wider Fingal area; and ensure that water pressures are maximised.

What are the benefits of these works?

- Improve water supply security and resilience for residents, hospitals, agricultural enterprises and business in the North Dublin Region;
- Increase the water transfer capacity to meet current demand and facilitate development in North County Dublin.

What is involved as part of this project?

As part of this project, Irish Water's Contractor will install a new large diameter underground watermain, which will run parallel to the existing watermain.

The vast majority of works will be carried out on private lands with very limited interface with the public, only at a number of short crossings of regional and local roads.

The route of the new pipeline generally follows the route of the existing watermain. The route was determined following a site selection and engagement process with a focus to limit impact to the public.

The new pipeline will predominantly be on private land; however, a number of public road crossings will be required at the following locations:

1. L3125 From Kilshane Cross to St Margarets
2. L7231 Newtown Cottages Road
3. R122 at St Margaret's
4. Kilreesk Road

The maps below indicate the road crossings, where the red line denotes the route for the new pipeline and the dotted blue line represents the current pipeline.

What is happening next?

Works recently commenced on private land. It is expected to take two years for the entire project to be completed.

As part of the next phase of works, the following local road closures and stop/go systems will be implemented to allow for the installation of the new 1200mm Ballycoolin Trunk Water Main in the following roads;

For more information, news and updates please visit www.water.ie

- The R122, just North of St Margaret's Village near the Junction with Kilreesk Lane. This will be carried out on **Tuesday, 13 July and Wednesday, 14 July**. Local diversions will be in place during this closure.
- Kilreesk Road, near the junction with Kilreesk Lane. This will be carried out on **Thursday, 15 July and Friday, 16 July**. Local diversions will be in place during this closure.
- A stop/go traffic management system will be in place on the L3125 from Kilshane Cross to St Margaret's on the following dates:
 - **5 July to 10 July** (Monday to Saturday inclusive)
 - **12 July to 14 July** (Monday to Wednesday inclusive)

to facilitate the installation of the new Trunkmain. Works will be carried out between 9.30am and 4.00pm at this location, to minimise impact to traffic.

Please see the below Traffic Management Plans for the proposed closures and diversion routes during the works. We will endeavour to update you as the project progresses.

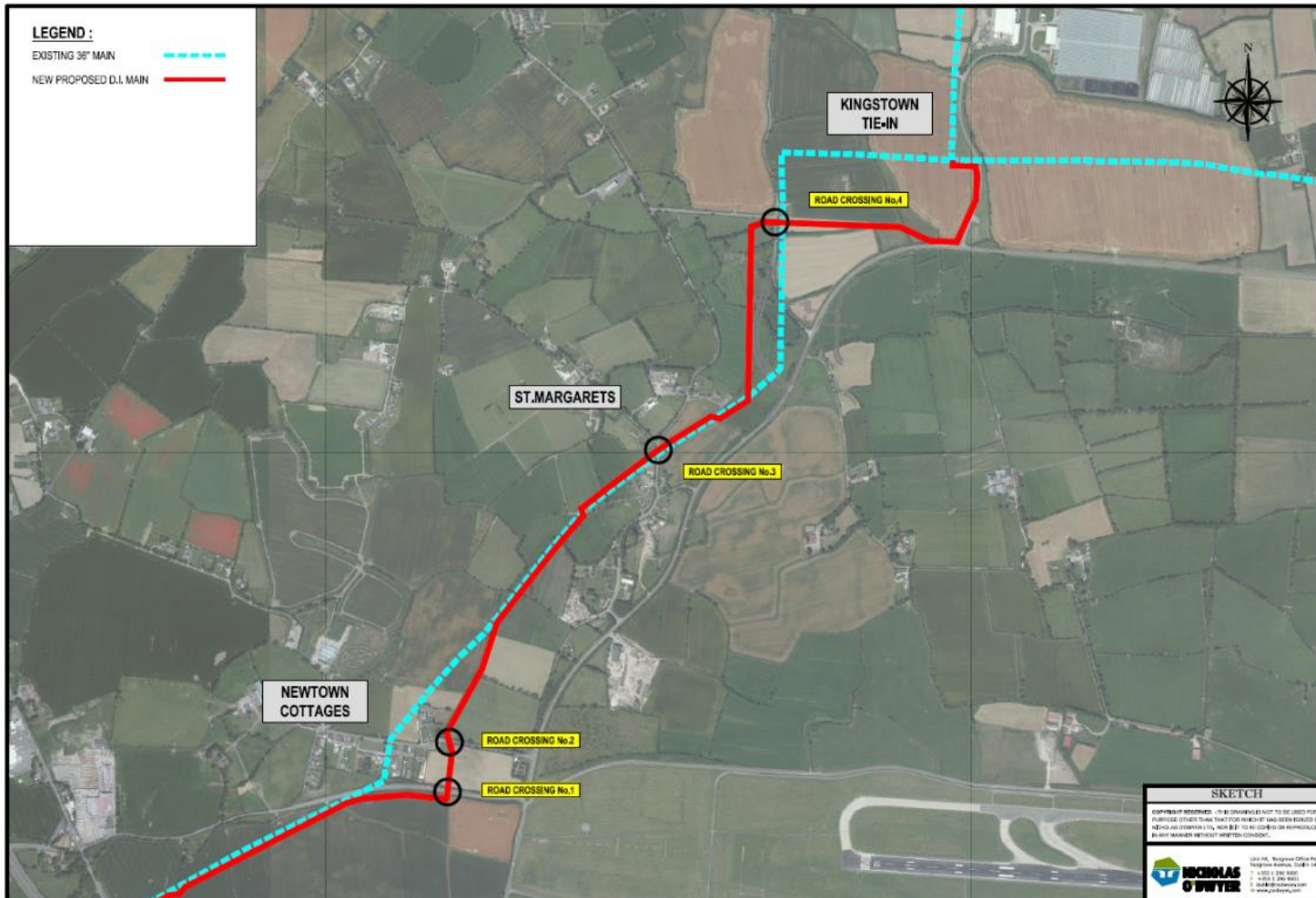


Figure 1: Four road crossings will be required throughout the month of July. The red line denotes the route for the new pipeline and the dotted blue line represents the current pipeline

For more information, news and updates please visit www.water.ie

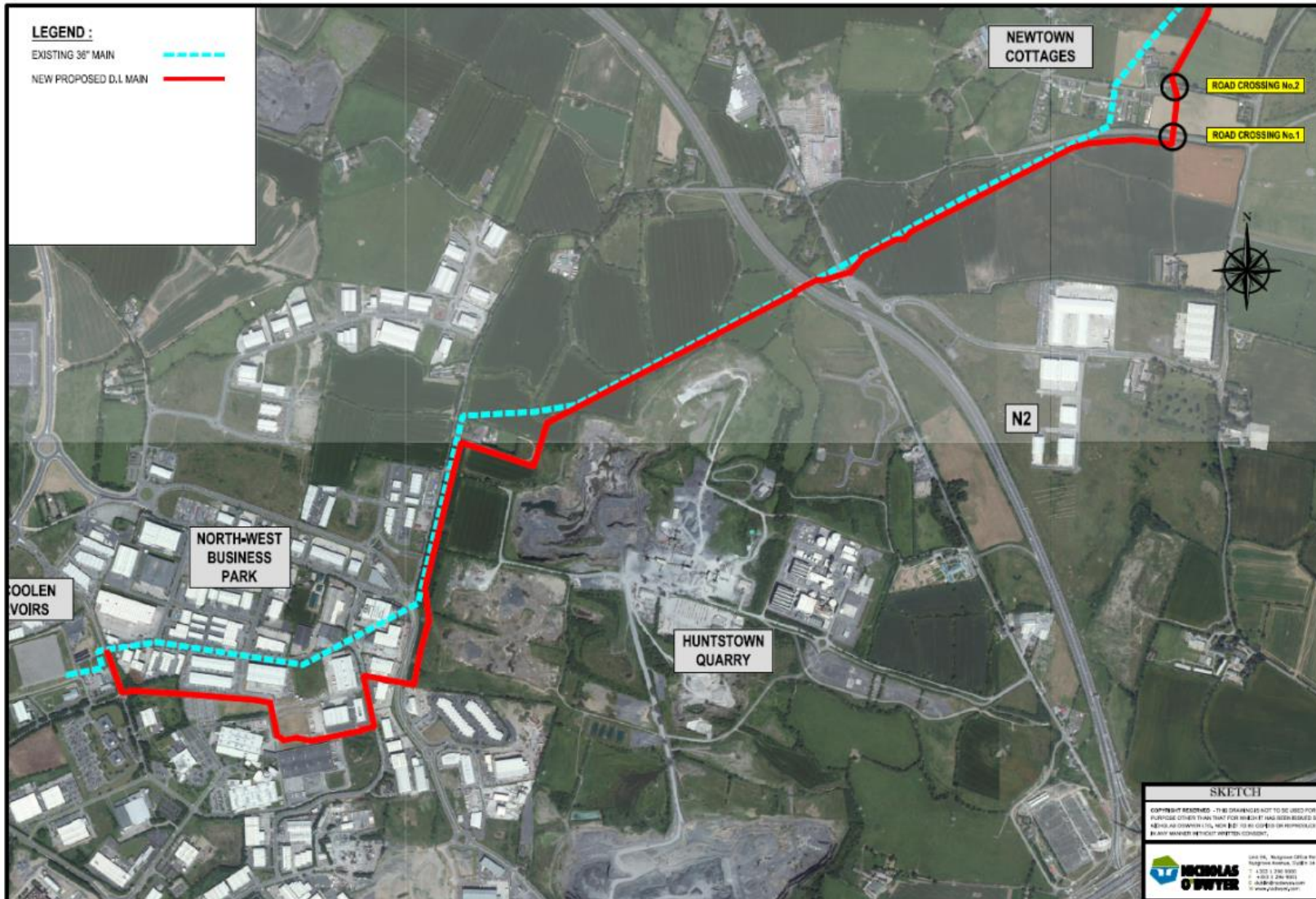


Figure 2: Four road crossings will be required throughout the month of July. The red line denotes the route for the new pipeline and the dotted blue line represents the current pipeline

For more information, news and updates please visit www.water.ie

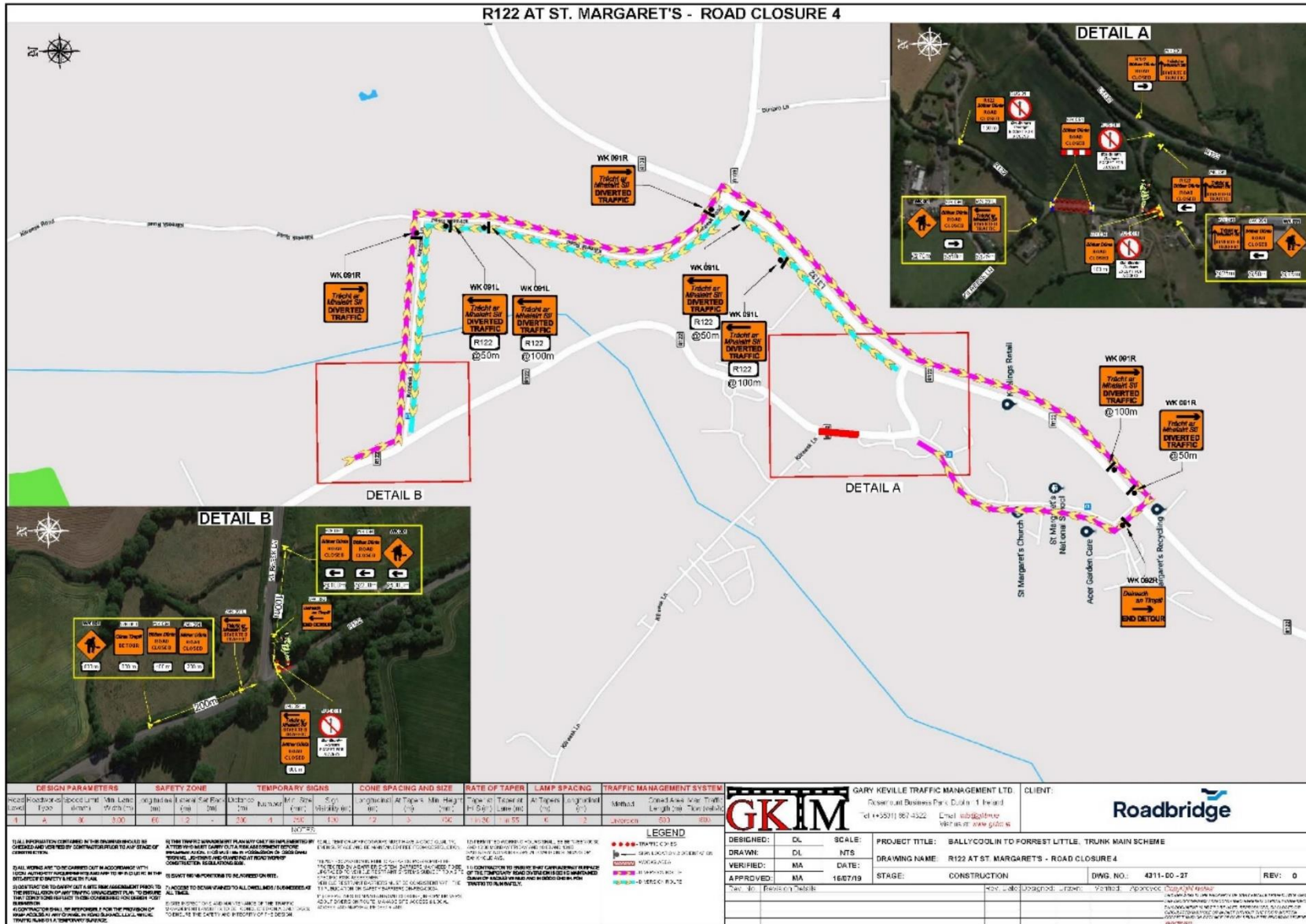


Figure 3: A road closure will be required on the R122, just North of St Margaret's Village near the Junction with Kilreesk Lane. This will be carried out on Tuesday, 13 July and Wednesday, 14 July. Local diversions will be in place during this closure.

For more information, news and updates please visit www.water.ie

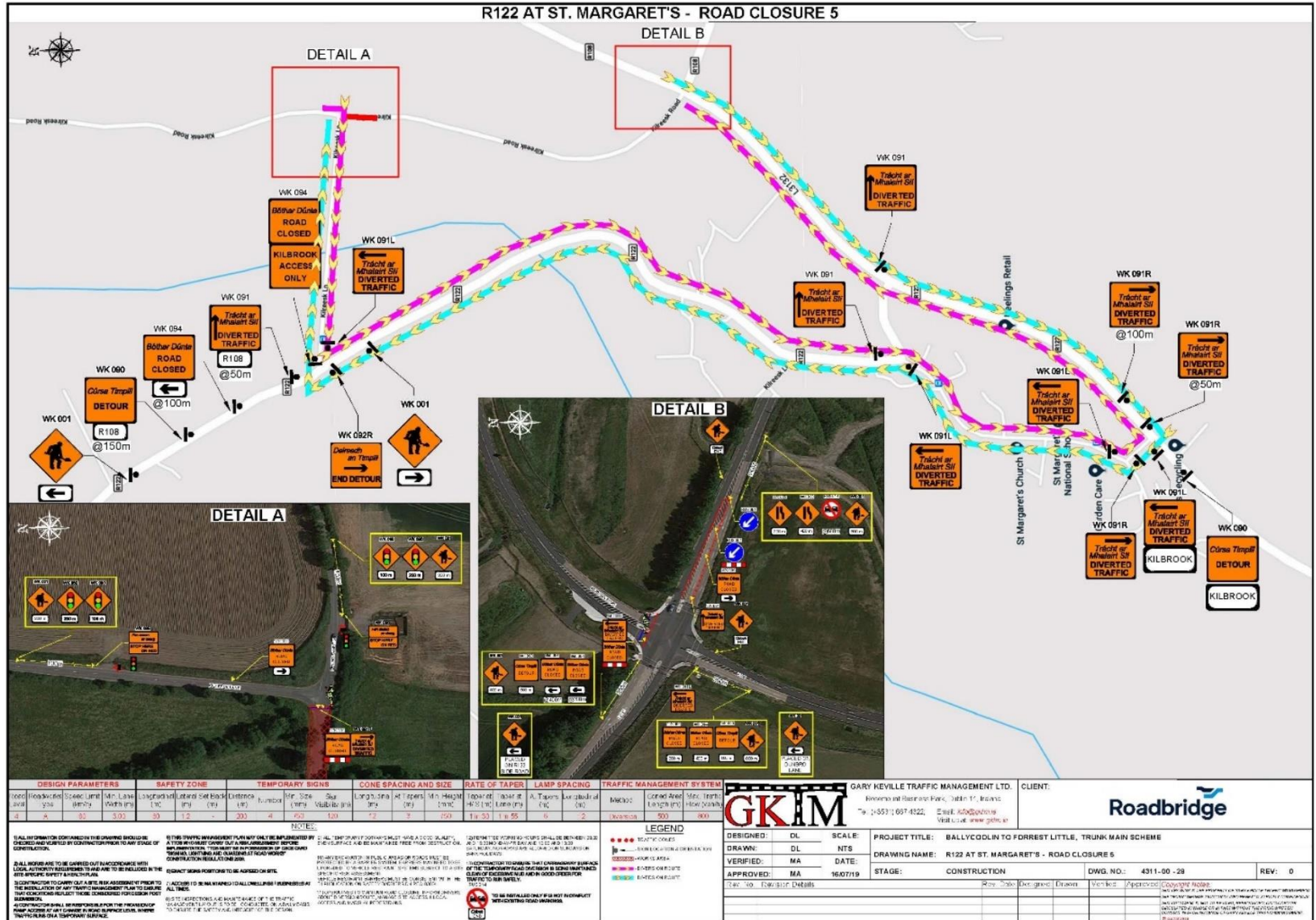


Figure 4: A road closure will be required on the Kilreesk Road, near the junction with Kilreesk Lane. This will be carried out on Thursday the 15th July and Friday the 16th July. Local diversions will be in place during this closure.

For more information, news and updates please visit www.water.ie