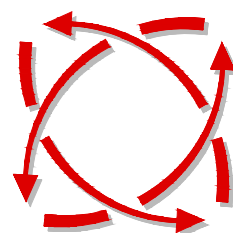


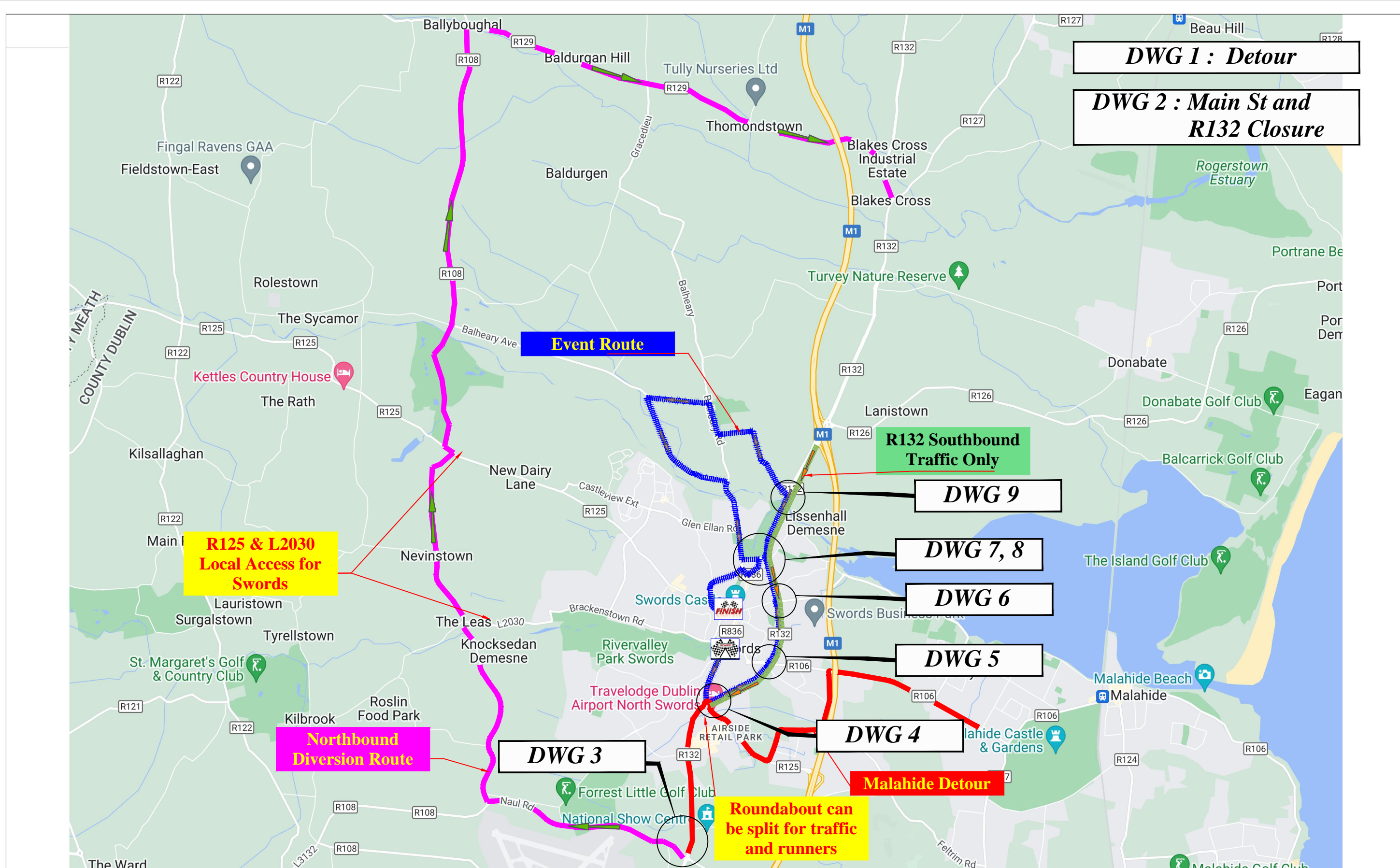
***PROPOSED TRAFFIC
MANAGEMENT SCHEME***

for

***Irish Life 10k Run,
Swords
2022***



***FREEFLOW
TRAFFIC
MANAGEMENT***



DWG 1 : Detour

DWG 2 : Main St and R132 Closure

Event Route

R125 & L2030 Local Access for Swords

Northbound Diversion Route

R132 Southbound Traffic Only

DWG 9

DWG 7, 8

DWG 6

DWG 5

DWG 4

Malahide Detour

Roundabout can be split for traffic and runners

DWG 3

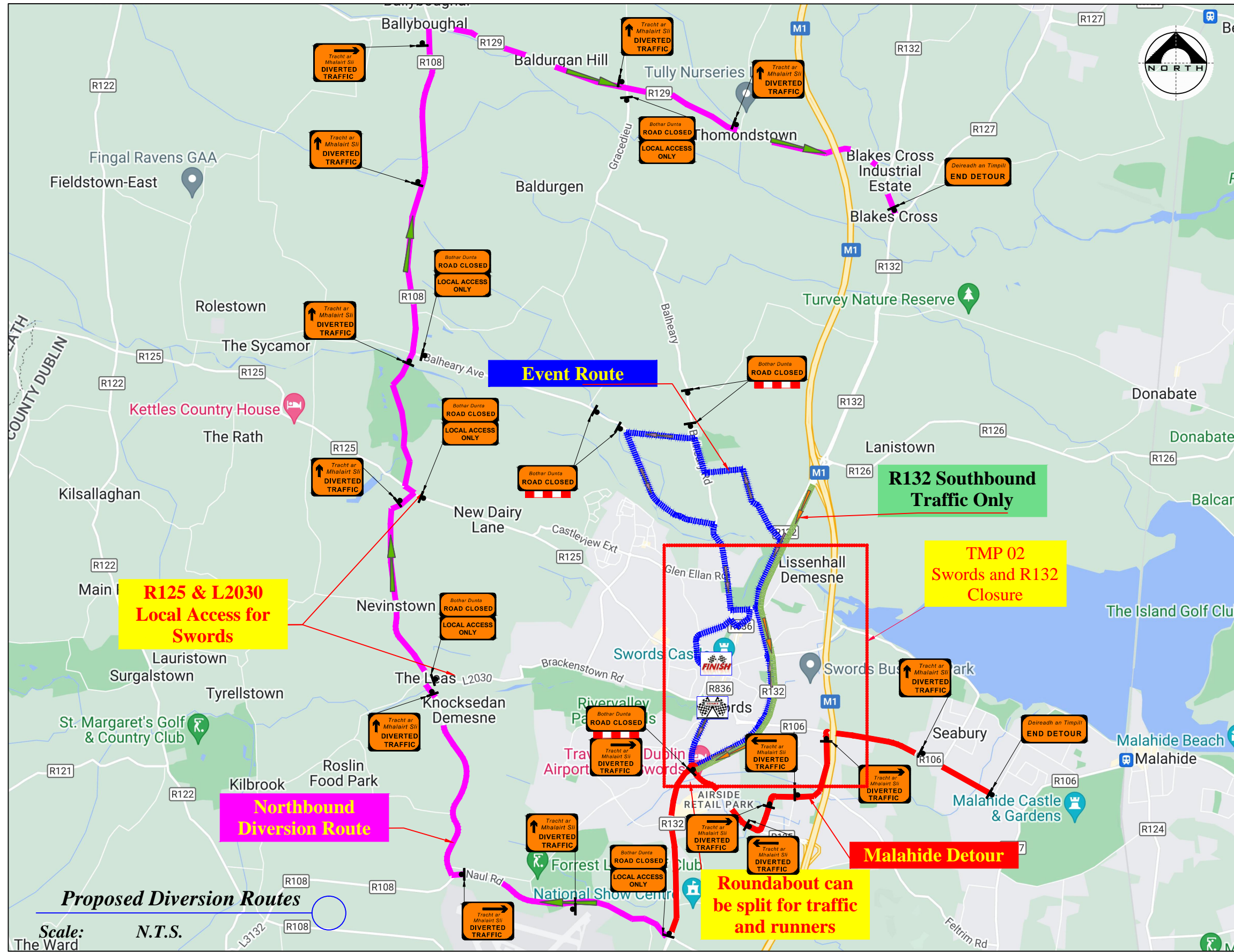


Rev:	Description:	Date:

Job Details:	
Proposed Traffic Management Plan for Irish Life 10k Run, Swords 2022	
Sheet:	CAD File ref.:

Drawing:	
Proposed Run Route and Detours	
Drawn By:	Date:
DM	April 2022

Dwg no:
Rev:
Scale:
As Shown



LEGEND

- Sign Location
- Lane Closed Barrier
- Event Route
- Diversion Route
- R132 Southbound Traffic
- Traffic Cones

Works TTM type:	Static Type A				
	Design Type A: >12h				
Design Parameters:	LV-1 (I)	LV-1 (III)	LV-1 (IV)	LV-2 (I)	LV-2 (II)
1. Minimum Sign Size mm	450	600	600	600	750
2. Statutory Speed of the Road	30km/h	50	60	80	100
3. Distance between Advance Signs	10m	20m	20m	120m	200m
4. Number of Advance Signs	1 (<12h) 2 (>12h)	2	3 (<12h) 2 (>12h)	3 (<12h) 4 (>12h)	3 (<12h) 4 (>12h)
5. Minimum Visibility of Signs	25m	50m	60m	90m	120m
6. Longitudinal Safety Zone	0.5m	5m	15m	45m	60m
7. Lateral Safety Zone	0.5m	0.5m	0.5m	1.2m	1.2m
8. Leading Taper	1in1m	1in5m	1in10m	1in40	1in200
9. Maximum at Tapers Cone Space	1m	3m	3m	3m	3m
10. Maximum Longitudinal Cone Space	3m	3m	6m	12m	12m
11. Lane Width (m)	2.5m	3 (2.5)	3 (2.5)	3 m	3 m
12. Two-way Roadway width (m)	5m	5m	5m	-	-

- Note:**
- All signs to comply with Chapter 8 of the "Traffic Signs Manual"-Guidance Document-2019.
 - All Traffic Management to be carried out in accordance with Chapter 8 of the "Traffic Signs Manual".
 - Detailed Risk Assessment to be carried out prior to the installation of Traffic Management System.
 - Exact sign positions to be agreed on site.
 - All affected Parties and An Garda Síochána to be notified prior to works commencing.
 - Signs to be positioned so as not to cause an obstruction to other road users.
 - All signs to be faced with retro-reflective material to class ref 2 of EN 12899.
 - "End of Roadworks" sign placed 20m to 50m from end of works area.
 - Emergency routes will be maintained.



Rev:	Description:	Date:

Job Details:
 Proposed Traffic Management Plan for Irish Life 10K Run, Swords 2022

Sheet: CAD File ref.:

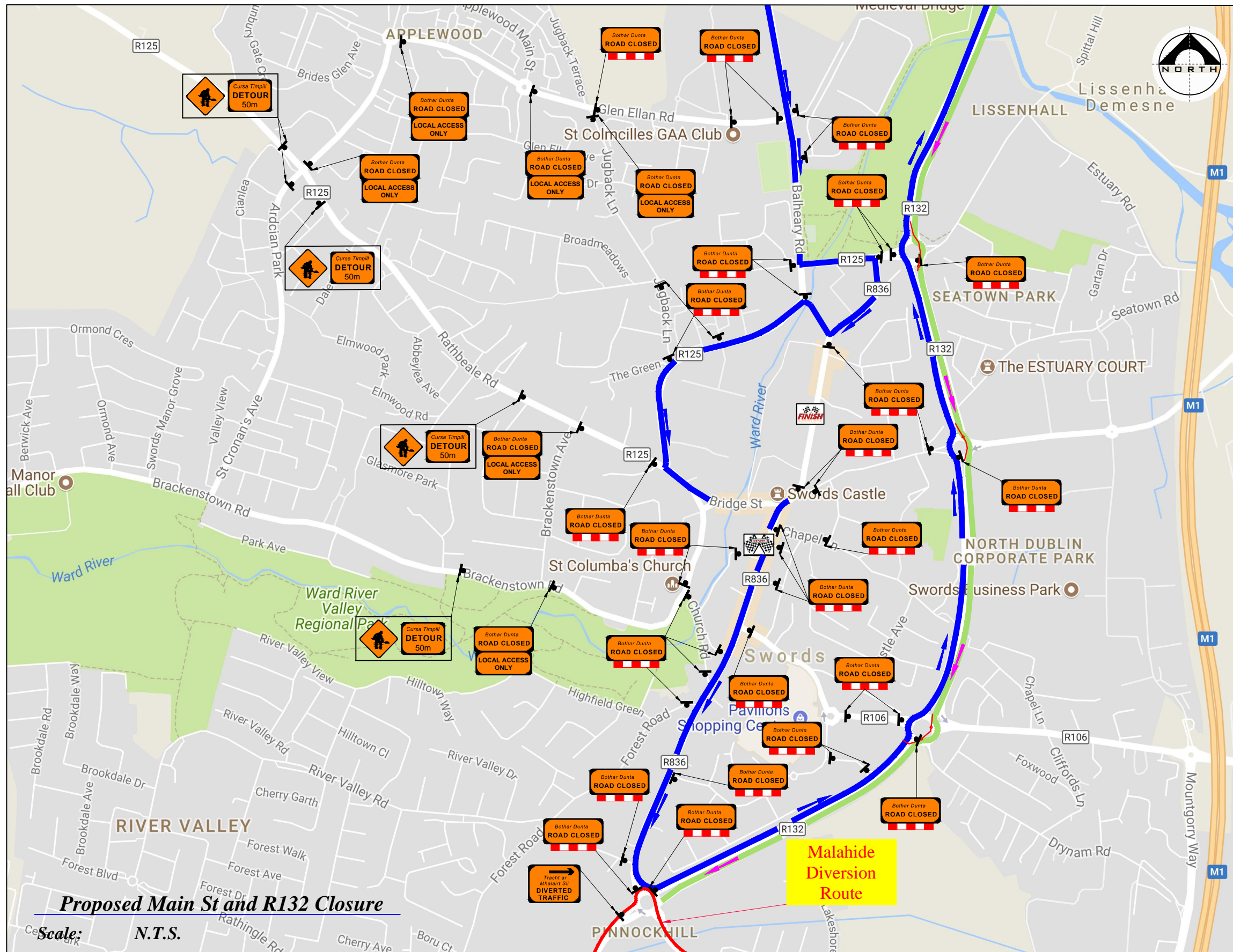
Drawing:
 Proposed Diversion Routes

Drawn By: DM Date: August 2022

Dwg no: 01

Rev:

Scale: As Shown



LEGEND

- Sign Location
- Lane Closed Barrier
- Event Route
- Diversion Route
- R132 Southbound Traffic
- Traffic Cones

Works TTM type:	Static Type A				
	Design Type A: >12h				
Design Parameters:	LV-1 (I)	LV-1 (III)	LV-1 (IV)	LV-2 (I)	LV-2 (II)
	1. Minimum Sign Size mm	450	600	600	600
2. Statutory Speed of the Road	30km/h	50	60	80	100
3. Distance between Advance Signs	10m	20m	20m	120m	200m
4. Number of Advance Signs	1 (<12h) 2 (>12h)	2	3 (<12h) 2 (>12h)	3 (<12h) 4 (>12h)	3 (<12h) 4 (>12h)
5. Minimum Visibility of Signs	25m	50m	60m	90m	120m
6. Longitudinal Safety Zone	0.5m	5m	15m	45m	60m
7. Lateral Safety Zone	0.5m	0.5m	0.5m	1.2m	1.2m
8. Leading Taper	1in1m	1in5m	1in10m	1in40	1in200
9. Maximum at Tapers Cone Space	1m	3m	3m	3m	3m
10. Maximum Longitudinal Cone Space	3m	3m	6m	12m	12m
11. Lane Width (m)	2.5m	3 (2.5)	3 (2.5)	3 m	3 m
12. Two-way Roadway width (m)	5m	5m	5m	-	-

- Note:**
- All signs to comply with Chapter 8 of the "Traffic Signs Manual"-Guidance Document-2019.
 - All Traffic Management to be carried out in accordance with Chapter 8 of the "Traffic Signs Manual".
 - Detailed Risk Assessment to be carried out prior to the installation of Traffic Management System.
 - Exact sign positions to be agreed on site.
 - All affected Parties and An Garda Síochána to be notified prior to works commencing.
 - Signs to be positioned so as not to cause an obstruction to other road users.
 - All signs to be faced with retro-reflective material to class ref 2 of EN 12899.
 - "End of Roadworks" sign placed 20m to 50m from end of works area.
 - Emergency routes will be maintained.



Rev:	Description:	Date:

Job Details:
 Proposed Traffic Management Plan for Irish Life 10k Run, Swords 2022

Sheet: CAD File ref.:

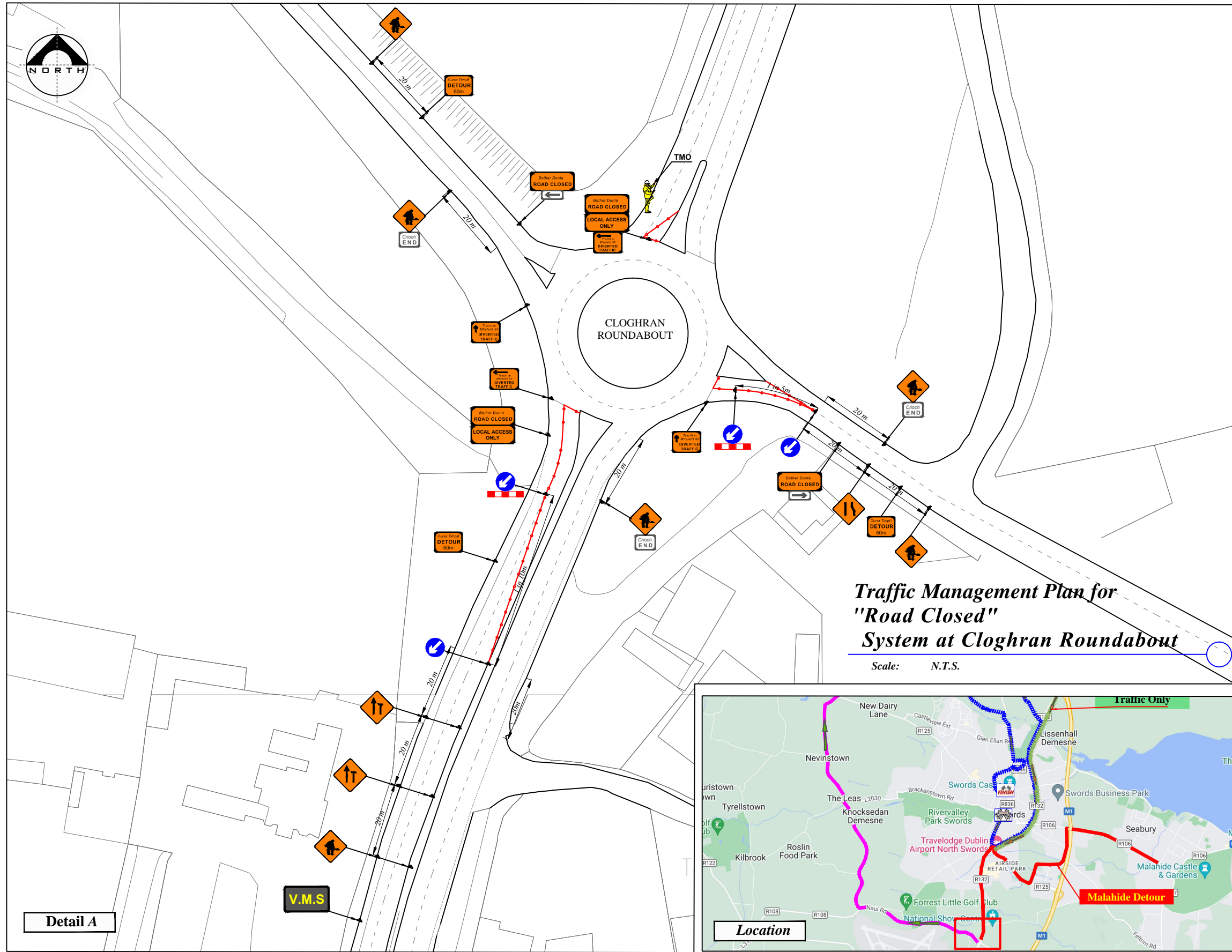
Drawing:
 Proposed Main St and R132 Closure

Drawn By: Date:
 DM April 2022

Dwg no:
 02

Rev:

Scale:
 As Shown



LEGEND

- Sign Location
- Lane Closed Barrier
- Event Route
- Diversion Route
- R132 Southbound Traffic
- Traffic Cones

Works TTM type:	Static Type A				
	Design Type A: >12h				
Design Parameters:	LV-1 (I)	LV-1 (III)	LV-1 (IV)	LV-2 (I)	LV-2 (II)
1. Minimum Sign Size mm	450	600	600	600	750
2. Statutory Speed of the Road	30km/h	50	60	80	100
3. Distance between Advance Signs	10m	20m	20m	120m	200m
4. Number of Advance Signs	1 (<12h) 2 (>12h)	2	3 (<12h) 2 (>12h)	3 (<12h) 4 (>12h)	3 (<12h) 4 (>12h)
5. Minimum Visibility of Signs	25m	50m	60m	90m	120m
6. Longitudinal Safety Zone	0.5m	5m	15m	45m	60m
7. Lateral Safety Zone	0.5m	0.5m	0.5m	1.2m	1.2m
8. Leading Taper	1in1m	1in5m	1in10m	1in40	1in200
9. Maximum at Tapers Cone Space	1m	3m	3m	3m	3m
10. Maximum Longitudinal Cone Space	3m	3m	6m	12m	12m
11. Lane Width (m)	2.5m	3 (2.5)	3 (2.5)	3 m	3 m
12. Two-way Roadway width (m)	5m	5m	5m	-	-

- Note:**
- All signs to comply with Chapter 8 of the "Traffic Signs Manual"-Guidance Document-2019.
 - All Traffic Management to be carried out in accordance with Chapter 8 of the "Traffic Signs Manual".
 - Detailed Risk Assessment to be carried out prior to the installation of Traffic Management System.
 - Exact sign positions to be agreed on site.
 - All affected Parties and An Garda Síochána to be notified prior to works commencing.
 - Signs to be positioned so as not to cause an obstruction to other road users.
 - All signs to be faced with retro-reflective material to class ref 2 of EN 12899.
 - "End of Roadworks" sign placed 20m to 50m from end of works area.
 - Emergency routes will be maintained.

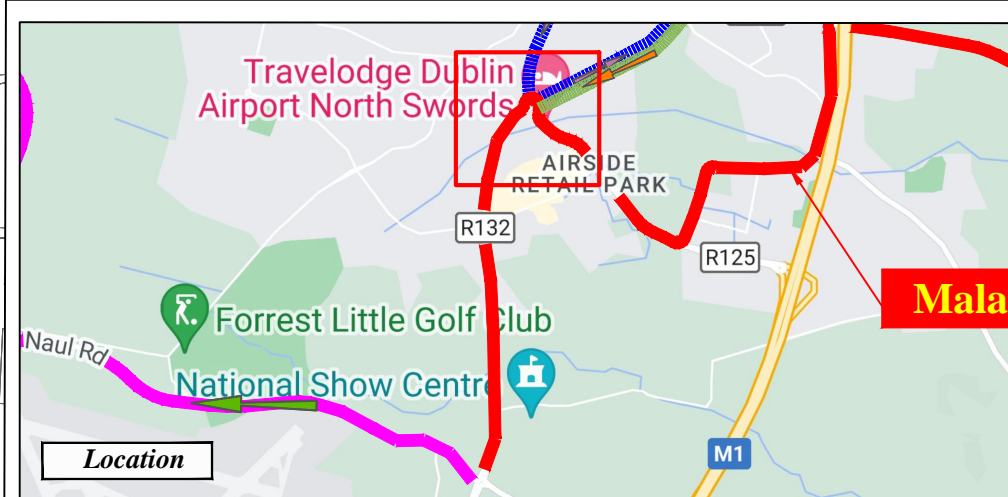
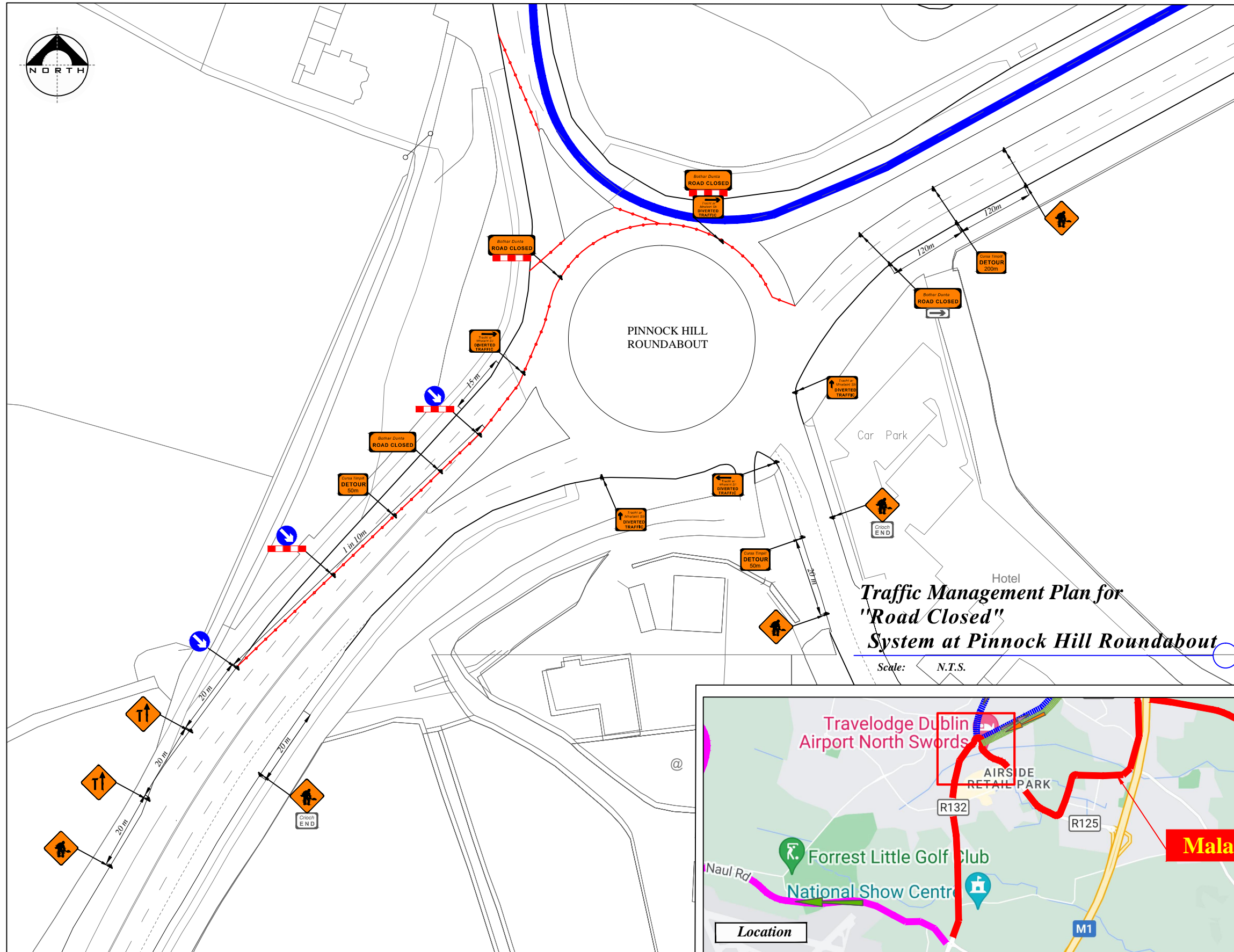


Rev:	Description:	Date:

Job Details:
Proposed Traffic Management Pla for Irish Life 10k Run, Swords 2022
Sheet:

Drawing:
TMP for "Road Closed" System at Cloghran Roundabout
Drawn By: DM
Date: April 2022

Dwg no: 03
Rev:
Scale: As Shown



LEGEND

- Sign Location
- Lane Closed Barrier
- Event Route
- Diversion Route
- R132 Southbound Traffic
- Traffic Cones

Works TTM type:	Static Type A				
	Design Type A: >12h				
Design Parameters:	LV-1 (I)	LV-1 (III)	LV-1 (IV)	LV-2 (I)	LV-2 (II)
1. Minimum Sign Size mm	450	600	600	600	750
2. Statutory Speed of the Road	30km/h	50	60	80	100
3. Distance between Advance Signs	10m	20m	20m	120m	200m
4. Number of Advance Signs	1 (<12h) 2 (>12h)	2	3 (<12h) 2 (>12h)	3 (<12h) 4 (>12h)	3 (<12h) 4 (>12h)
5. Minimum Visibility of Signs	25m	50m	60m	90m	120m
6. Longitudinal Safety Zone	0.5m	5m	15m	45m	60m
7. Lateral Safety Zone	0.5m	0.5m	0.5m	1.2m	1.2m
8. Leading Taper	1in1m	1in5m	1in10m	1in40	1in100
9. Maximum at Tapers Cone Space	1m	3m	3m	3m	3m
10. Maximum Longitudinal Cone Space	3m	3m	6m	12m	12m
11. Lane Width (m)	2.5m	3 (2.5)	3 (2.5)	3 m	3 m
12. Two-way Roadway width (m)	5m	5m	5m	-	-

- Note:**
- All signs to comply with Chapter 8 of the "Traffic Signs Manual"-Guidance Document-2019.
 - All Traffic Management to be carried out in accordance with Chapter 8 of the "Traffic Signs Manual".
 - Detailed Risk Assessment to be carried out prior to the installation of Traffic Management System.
 - Exact sign positions to be agreed on site.
 - All affected Parties and An Garda Siochana to be notified prior to works commencing.
 - Signs to be positioned so as not to cause an obstruction to other road users.
 - All signs to be faced with retro-reflective material to class ref 2 of EN 12899.
 - "End of Roadworks" sign placed 20m to 50m from end of works area.
 - Emergency routes will be maintained.

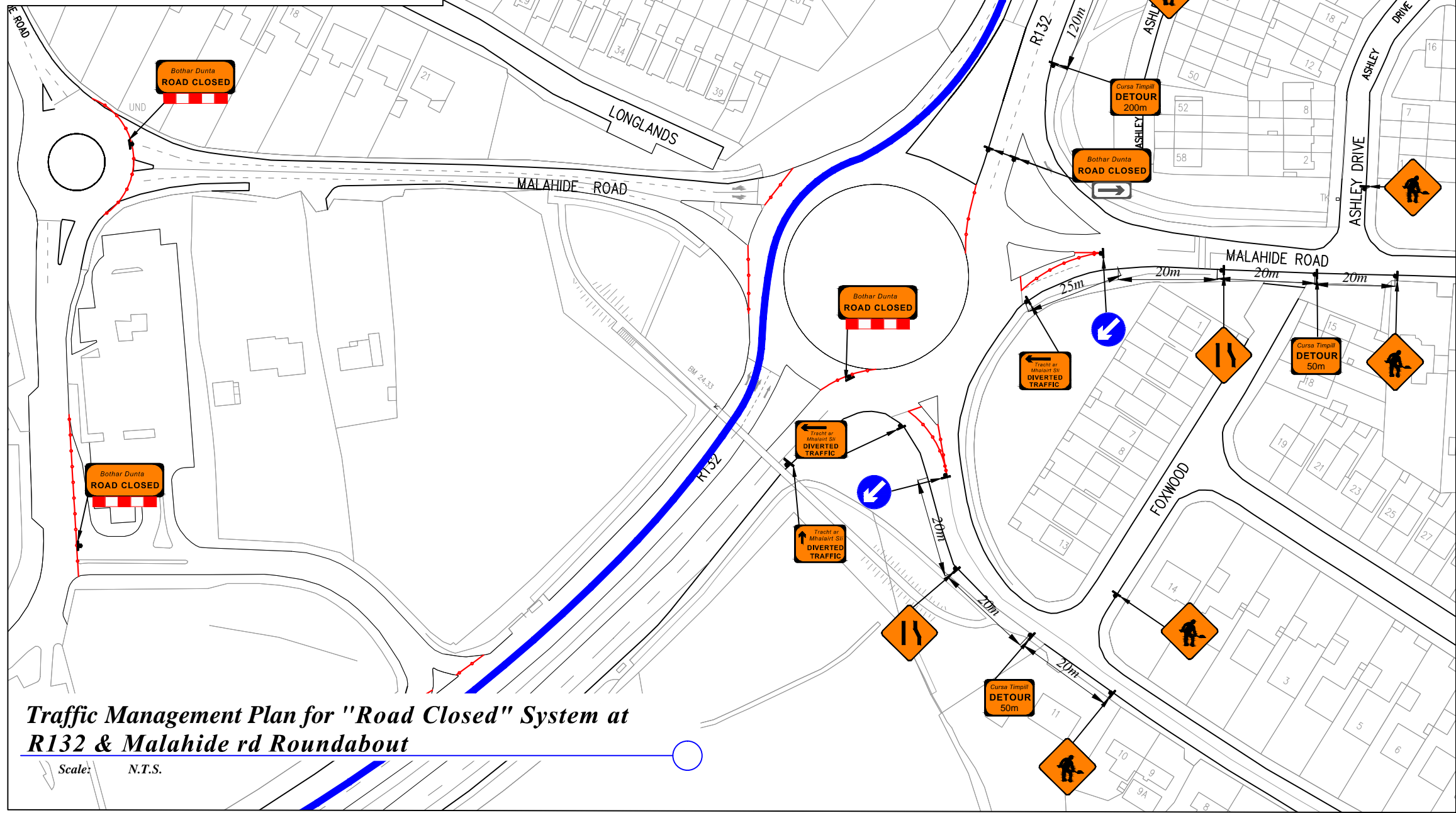
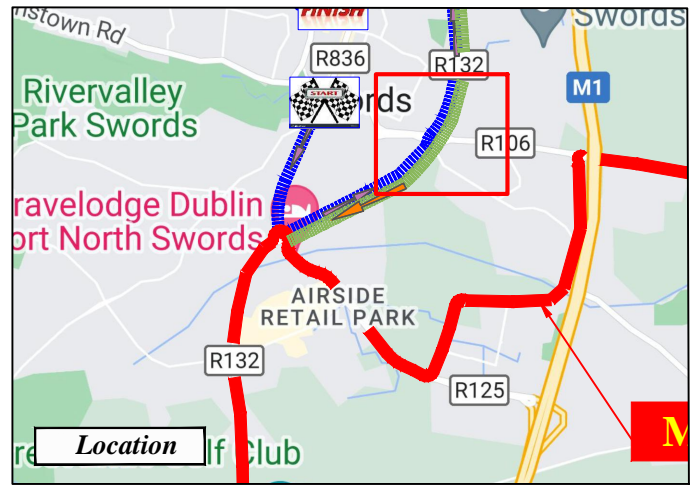


Rev:	Description:	Date:

Job Details:	
Proposed Traffic Management Pla for Irish Life 10k Run, Swords 2022	
Sheet:	CAD File ref.:

Drawing:	
TMP for "Road Closed" System at Pinnock Hill Roundabout	
Drawn By:	Date:
DM	April 2022

Dwg no:	04
Rev:	
Scale:	As Shown



Traffic Management Plan for "Road Closed" System at R132 & Malahide rd Roundabout

Scale: N.T.S.

LEGEND

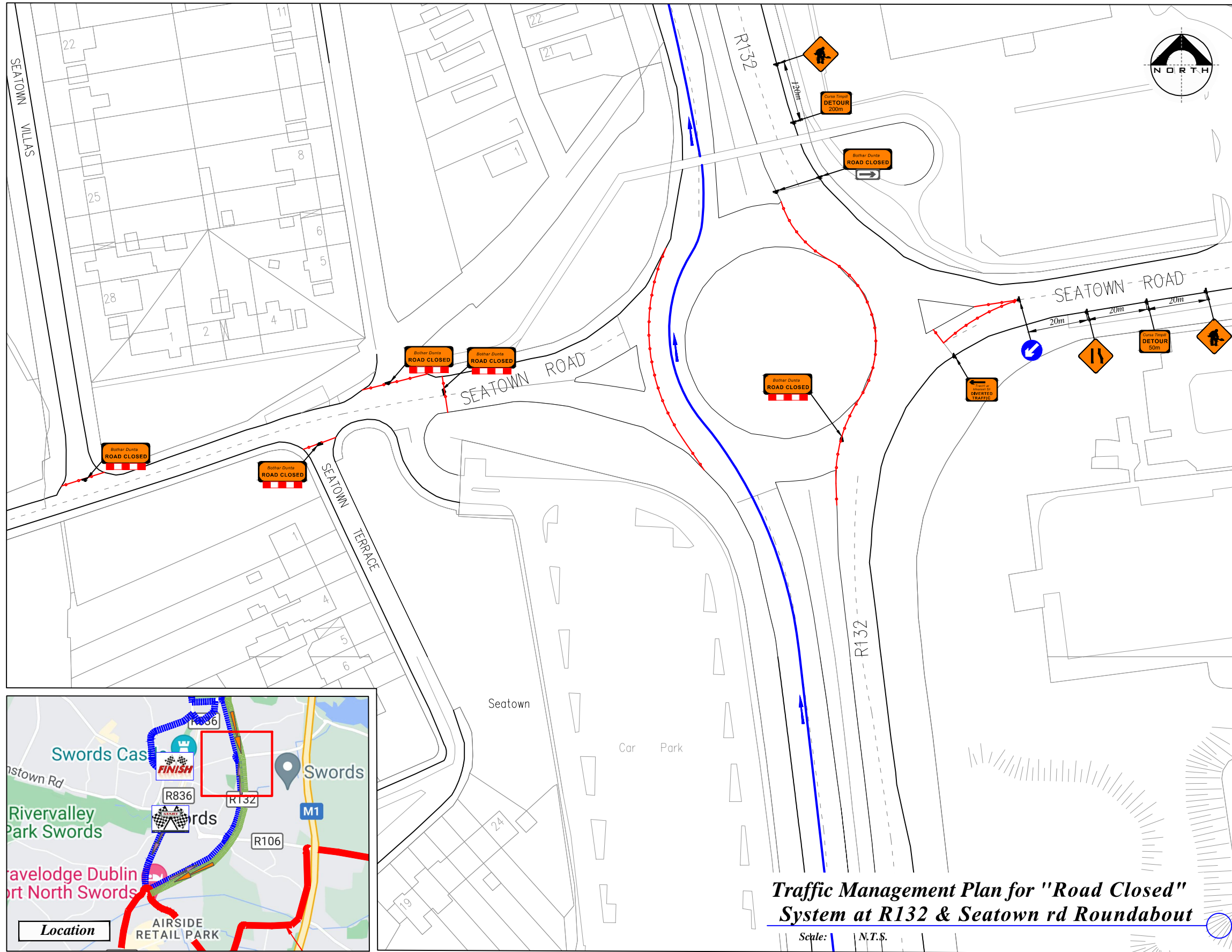
- Sign Location
- Lane Closed Barrier
- Event Route
- Diversion Route
- R132 Southbound Traffic
- Traffic Cones

Works TTM type:	Static Type A				
	Design Type A: >12h				
Design Parameters:	LV-1 (I)	LV-1 (III)	LV-1 (IV)	LV-2 (I)	LV-2 (II)
	1. Minimum Sign Size mm	450	600	600	600
2. Statutory Speed of the Road	30km/h	50	60	80	100
3. Distance between Advance Signs	10m	20m	20m	120m	200m
4. Number of Advance Signs	1 (<12h) 2 (>12h)	2	3 (<12h) 2 (>12h)	3 (<12h) 4 (>12h)	3 (<12h) 4 (>12h)
5. Minimum Visibility of Signs	25m	50m	60m	90m	120m
6. Longitudinal Safety Zone	0.5m	5m	15m	45m	60m
7. Lateral Safety Zone	0.5m	0.5m	0.5m	1.2m	1.2m
8. Leading Taper	1in1m	1in5m	1in10m	1in40	1in100
9. Maximum at Tapers Cone Space	1m	3m	3m	3m	3m
10. Maximum Longitudinal Cone Space	3m	3m	6m	12m	12m
11. Lane Width (m)	2.5m	3 (2.5)	3 (2.5)	3 m	3 m
12. Two-way Roadway width (m)	5m	5m	5m	-	-

- Note:**
- All signs to comply with Chapter 8 of the "Traffic Signs Manual"-Guidance Document-2019.
 - All Traffic Management to be carried out in accordance with Chapter 8 of the "Traffic Signs Manual".
 - Detailed Risk Assessment to be carried out prior to the installation of Traffic Management System.
 - Exact sign positions to be agreed on site.
 - All affected Parties and An Garda Síochana to be notified prior to works commencing.
 - Signs to be positioned so as not to cause an obstruction to other road users.
 - All signs to be faced with retro-reflective material to class ref 2 of EN 12899.
 - "End of Roadworks" sign placed 20m to 50m from end of works area.
 - Emergency routes will be maintained.



Rev:	Description:	Date:	Job Details:	Drawing:	Dwg no:
			Proposed Traffic Management Pla for Irish Life 10k Run, Swords 2022	TMP for "Road Closed" System at R132 & Malahide rd Roundabout	05
			Sheet:	Drawn By:	Rev:
			CAD File ref.:	DM	
				Date:	Scale:
				April 2022	As Shown

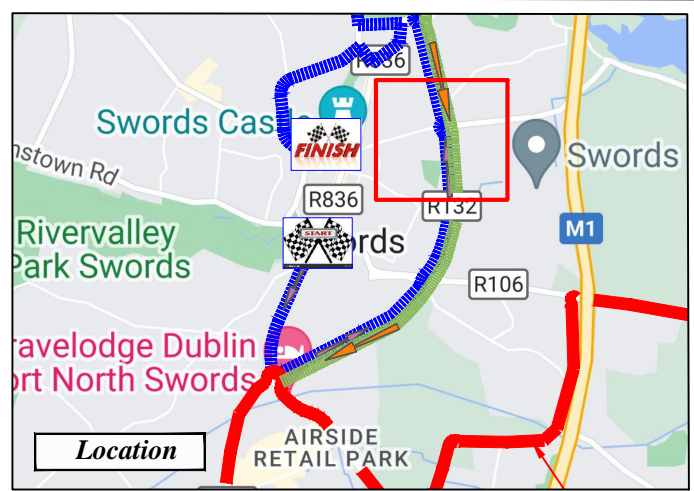


LEGEND

- Sign Location
- Lane Closed Barrier
- Event Route
- Diversion Route
- R132 Southbound Traffic
- Traffic Cones

Works TTM type:	Static Type A				
	Design Type A: >12h				
	LV-1 (I)	LV-1 (III)	LV-1 (IV)	LV-2 (I)	LV-2 (II)
Design Parameters:					
1. Minimum Sign Size mm	450	600	600	600	750
2. Statutory Speed of the Road	30km/h	50	60	80	100
3. Distance between Advance Signs	10m	20m	20m	120m	200m
4. Number of Advance Signs	1 (<12h) 2 (>12h)	2	3 (<12h) 2 (>12h)	3 (<12h) 4 (>12h)	3 (<12h) 4 (>12h)
5. Minimum Visibility of Signs	25m	50m	60m	90m	120m
6. Longitudinal Safety Zone	0.5m	5m	15m	45m	60m
7. Lateral Safety Zone	0.5m	0.5m	0.5m	1.2m	1.2m
8. Leading Taper	1in1m	1in5m	1in10m	1in40	1in200
9. Maximum at Tapers Cone Space	1m	3m	3m	3m	3m
10. Maximum Longitudinal Cone Space	3m	3m	6m	12m	12m
11. Lane Width (m)	2.5m	3 (2.5)	3 (2.5)	3 m	3 m
12. Two-way Roadway width (m)	5m	5m	5m	-	-

- Note:**
- All signs to comply with Chapter 8 of the "Traffic Signs Manual"-Guidance Document-2019.
 - All Traffic Management to be carried out in accordance with Chapter 8 of the "Traffic Signs Manual".
 - Detailed Risk Assessment to be carried out prior to the installation of Traffic Management System.
 - Exact sign positions to be agreed on site.
 - All affected Parties and An Garda Siochana to be notified prior to works commencing.
 - Signs to be positioned so as not to cause an obstruction to other road users.
 - All signs to be faced with retro-reflective material to class ref 2 of EN 12899.
 - "End of Roadworks" sign placed 20m to 50m from end of works area.
 - Emergency routes will be maintained.



Traffic Management Plan for "Road Closed" System at R132 & Seatown rd Roundabout

Scale: N.T.S.



Rev:	Description:	Date:

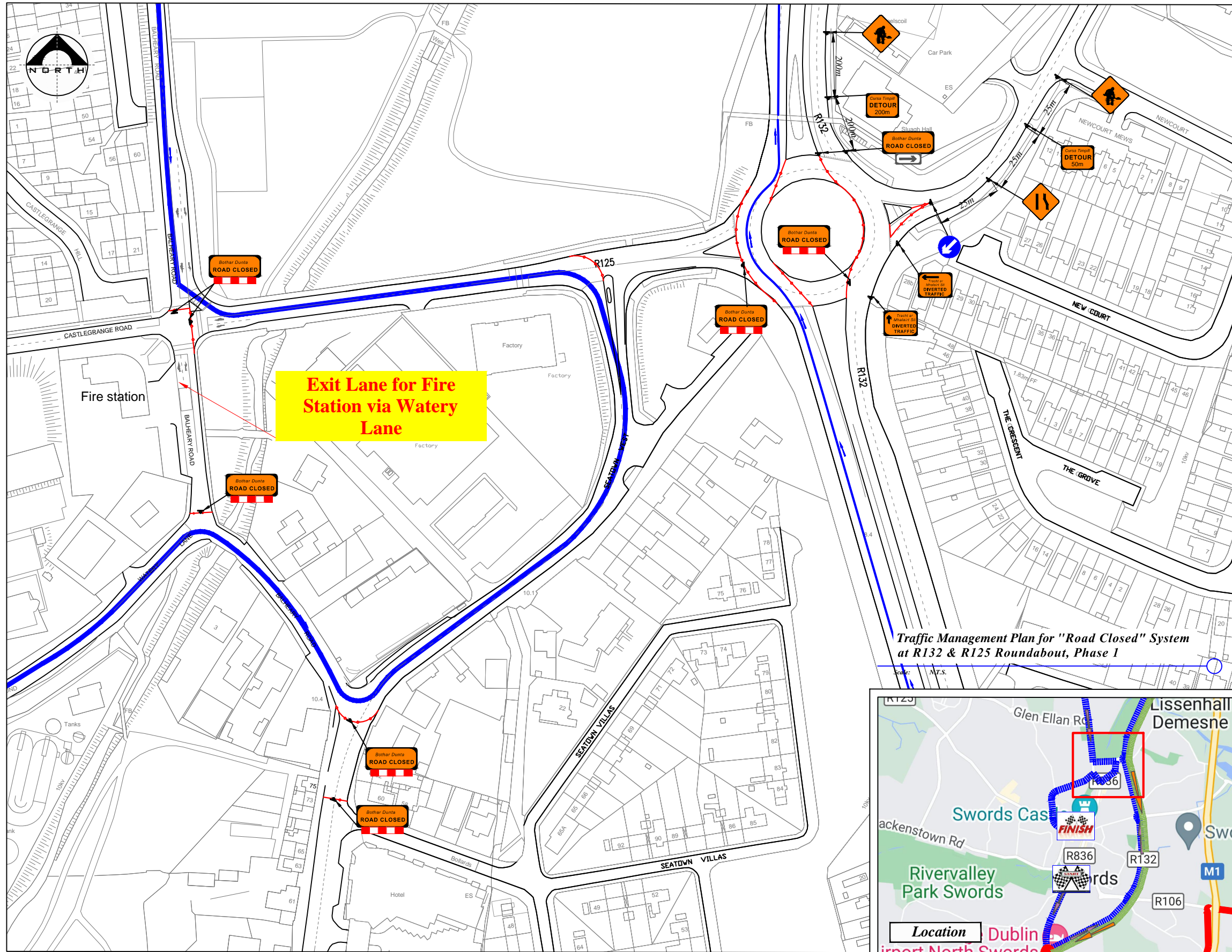
Job Details:
 Proposed Traffic Management Pla for Irish Life 10k Run, Swords 2022

Sheet: CAD File ref.:

Drawing:
 TMP for "Road Closed" System at R132 & Seatown rd Roundabout

Drawn By: DM Date: April 2022

Dwg no: 06
 Rev:
 Scale: As Shown



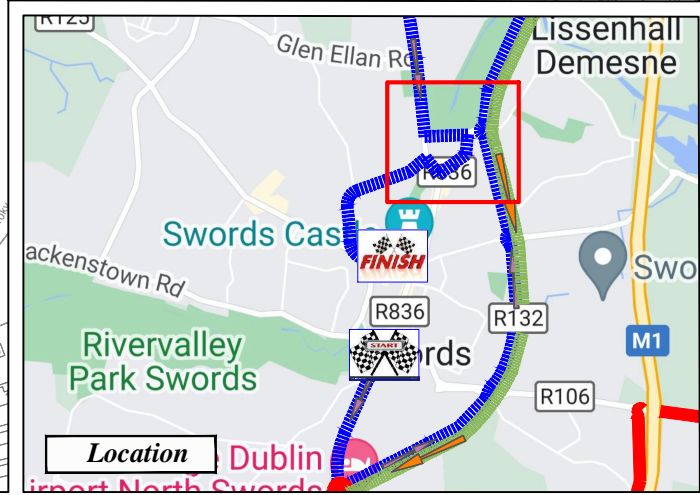
LEGEND

- Sign Location
- Lane Closed Barrier
- Event Route
- Diversion Route
- R132 Southbound Traffic
- Traffic Cones

Works TTM type:	Static Type A				
	Design Type A: >12h				
Design Parameters:	LV-1 (I)	LV-1 (III)	LV-1 (IV)	LV-2 (I)	LV-2 (II)
	1. Minimum Sign Size mm	450	600	600	600
2. Statutory Speed of the Road	30km/h	50	60	80	100
3. Distance between Advance Signs	10m	20m	20m	120m	200m
4. Number of Advance Signs	1 (<12h) 2 (>12h)	2	3 (<12h) 2 (>12h)	3 (<12h) 4 (>12h)	3 (<12h) 4 (>12h)
5. Minimum Visibility of Signs	25m	50m	60m	90m	120m
6. Longitudinal Safety Zone	0.5m	5m	15m	45m	60m
7. Lateral Safety Zone	0.5m	0.5m	0.5m	1.2m	1.2m
8. Leading Taper	1in1m	1in5m	1in10m	1in40	1in100
9. Maximum at Tapers Cone Space	1m	3m	3m	3m	3m
10. Maximum Longitudinal Cone Space	3m	3m	6m	12m	12m
11. Lane Width (m)	2.5m	3 (2.5)	3 (2.5)	3 m	3 m
12. Two-way Roadway width (m)	5m	5m	5m	-	-

- Note:**
- All signs to comply with Chapter 8 of the "Traffic Signs Manual"-Guidance Document-2019.
 - All Traffic Management to be carried out in accordance with Chapter 8 of the "Traffic Signs Manual".
 - Detailed Risk Assessment to be carried out prior to the installation of Traffic Management System.
 - Exact sign positions to be agreed on site.
 - All affected Parties and An Garda Síochana to be notified prior to works commencing.
 - Signs to be positioned so as not to cause an obstruction to other road users.
 - All signs to be faced with retro-reflective material to class ref 2 of EN 12899.
 - "End of Roadworks" sign placed 20m to 50m from end of works area.
 - Emergency routes will be maintained.

Traffic Management Plan for "Road Closed" System at R132 & R125 Roundabout, Phase 1

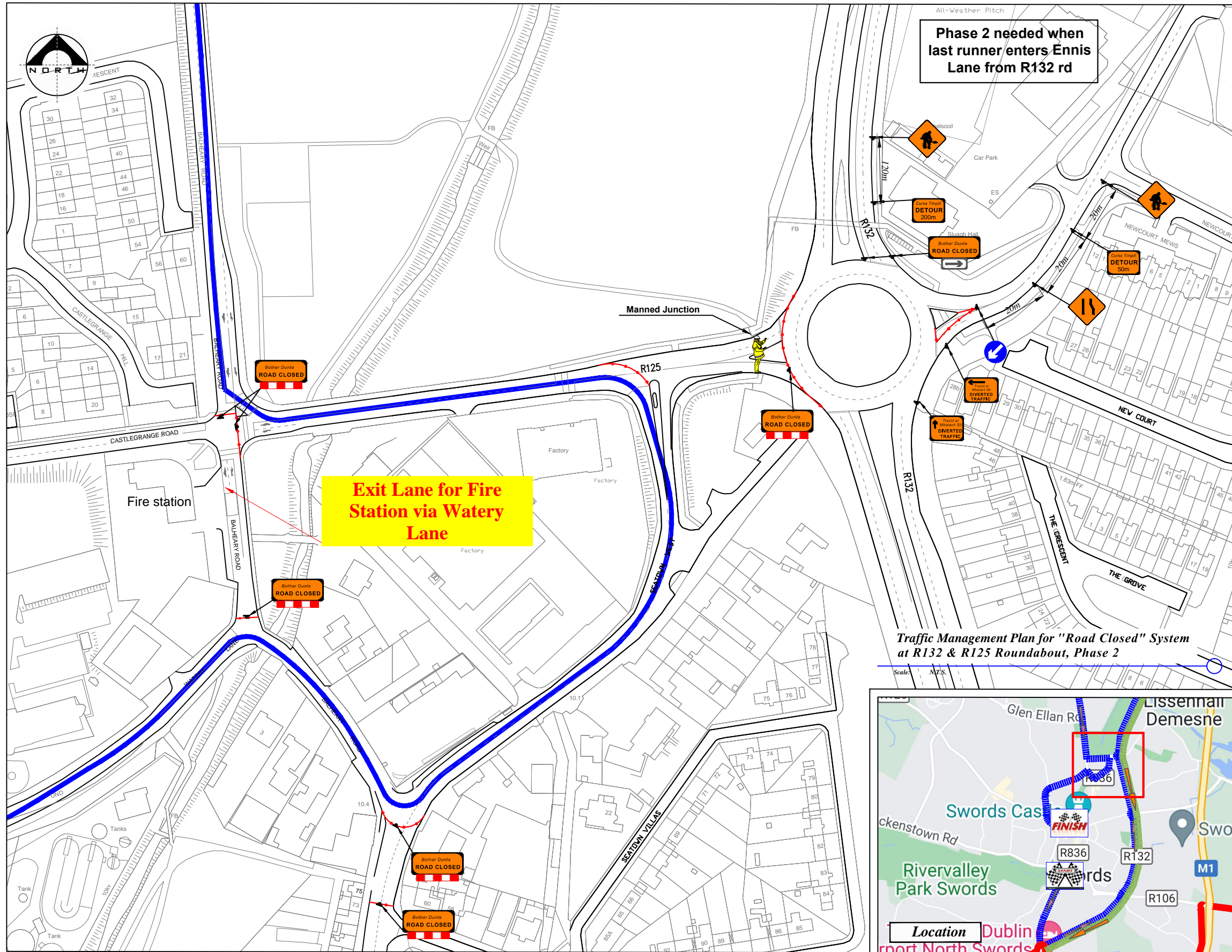


Rev:	Description:	Date:

Job Details: Proposed Traffic Management Pla for Irish Life 10k Run, Swords 2022	
Sheet:	CAD File ref.:

Drawing: TMP for "Road Closed" System at R132 & R125 Roundabout Phase 1	
Drawn By: DM	Date: April 2022

Dwg no: 07
Rev:
Scale: As Shown



Traffic Management Plan for "Road Closed" System at R132 & R125 Roundabout, Phase 2

LEGEND

- Sign Location
- Lane Closed Barrier
- Event Route
- Diversion Route
- R132 Southbound Traffic
- Traffic Cones

Works TTM type:	Static Type A				
	Design Type A: >12h				
Design Parameters:	LV-1 (I)	LV-1 (III)	LV-1 (IV)	LV-2 (I)	LV-2 (II)
1. Minimum Sign Size mm	450	600	600	600	750
2. Statutory Speed of the Road	30km/h	50	60	80	100
3. Distance between Advance Signs	10m	20m	20m	120m	200m
4. Number of Advance Signs	1 (<12h) 2 (>12h)	2	3 (<12h) 2 (>12h)	3 (<12h) 4 (>12h)	3 (<12h) 4 (>12h)
5. Minimum Visibility of Signs	25m	50m	60m	90m	120m
6. Longitudinal Safety Zone	0.5m	5m	15m	45m	60m
7. Lateral Safety Zone	0.5m	0.5m	0.5m	1.2m	1.2m
8. Leading Taper	1in1m	1in5m	1in10m	1in40	1in100
9. Maximum at Tapers Cone Space	1m	3m	3m	3m	3m
10. Maximum Longitudinal Cone Space	3m	3m	6m	12m	12m
11. Lane Width (m)	2.5m	3 (2.5)	3 (2.5)	3 m	3 m
12. Two-way Roadway width (m)	5m	5m	5m	-	-

- Note:**
- All signs to comply with Chapter 8 of the "Traffic Signs Manual"-Guidance Document-2019.
 - All Traffic Management to be carried out in accordance with Chapter 8 of the "Traffic Signs Manual".
 - Detailed Risk Assessment to be carried out prior to the installation of Traffic Management System.
 - Exact sign positions to be agreed on site.
 - All affected Parties and An Garda Síochána to be notified prior to works commencing.
 - Signs to be positioned so as not to cause an obstruction to other road users.
 - All signs to be faced with retro-reflective material to class ref 2 of EN 12899.
 - "End of Roadworks" sign placed 20m to 50m from end of works area.
 - Emergency routes will be maintained.
 - Phase 2 needed when last runner enters Ennis Lane from R132 rd.



Rev:	Description:	Date:

Job Details:
 Proposed Traffic Management Pla for Irish Life 10k Run, Swords 2022

Sheet: CAD File ref.:

Drawing:
 TMP for "Road Closed" System at R132 & R125 Roundabout Phase 2

Drawn By: Date:
 DM April 2022

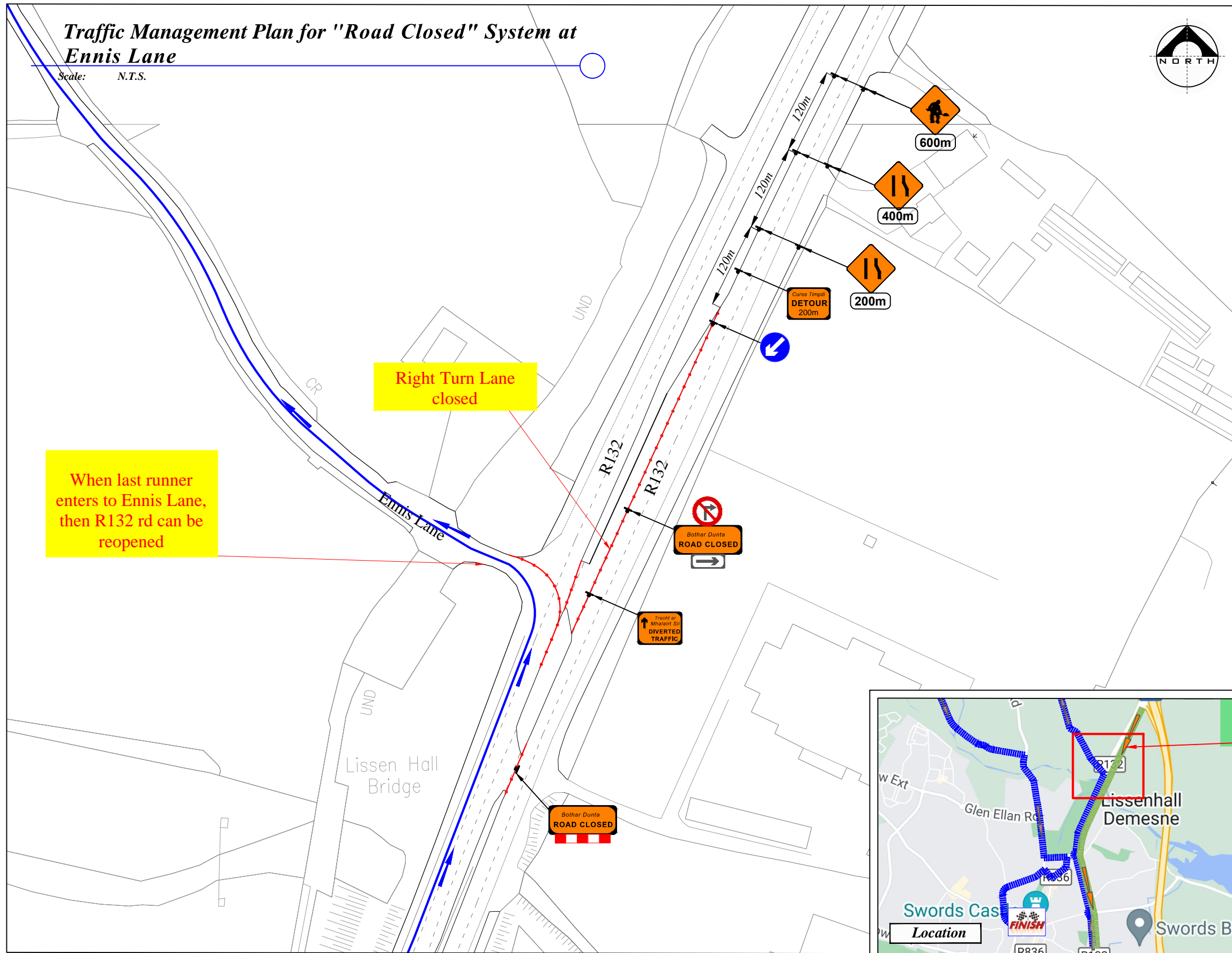
Dwg no:
08

Rev:

Scale:
As Shown

Traffic Management Plan for "Road Closed" System at Ennis Lane

Scale: N.T.S.

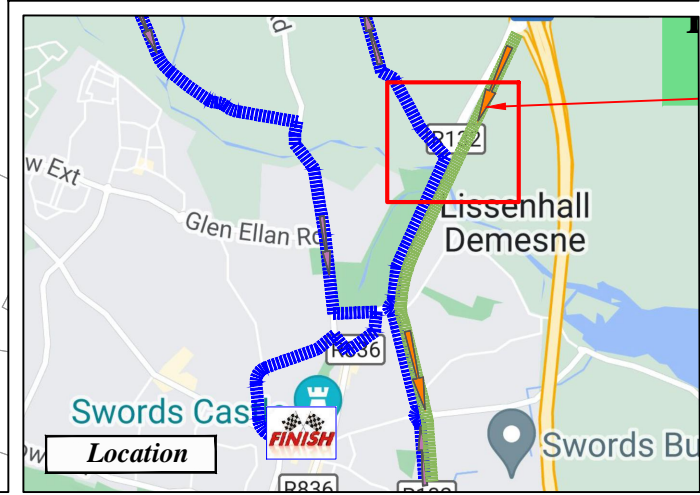


LEGEND

- Sign Location
- Lane Closed Barrier
- Event Route
- Diversion Route
- R132 Southbound Traffic
- Traffic Cones

Works TTM type:	Static Type A				
	Design Type A: >12h				
Design Parameters:	LV-1 (I)	LV-1 (III)	LV-1 (IV)	LV-2 (I)	LV-2 (II)
	1. Minimum Sign Size mm	450	600	600	600
2. Statutory Speed of the Road	30km/h	50	60	80	100
3. Distance between Advance Signs	10m	20m	20m	120m	200m
4. Number of Advance Signs	1 (<12h) 2 (>12h)	2	3 (<12h) 2 (>12h)	3 (<12h) 4 (>12h)	3 (<12h) 4 (>12h)
5. Minimum Visibility of Signs	25m	50m	60m	90m	120m
6. Longitudinal Safety Zone	0.5m	5m	15m	45m	60m
7. Lateral Safety Zone	0.5m	0.5m	0.5m	1.2m	1.2m
8. Leading Taper	1in1m	1in5m	1in10m	1in40	1in100
9. Maximum at Tapers Cone Space	1m	3m	3m	3m	3m
10. Maximum Longitudinal Cone Space	3m	3m	6m	12m	12m
11. Lane Width (m)	2.5m	3	3 (2.5)	3 m	3 m
12. Two-way Roadway width (m)	5m	5m	5m	-	-

- Note:**
- All signs to comply with Chapter 8 of the "Traffic Signs Manual"-Guidance Document-2019.
 - All Traffic Management to be carried out in accordance with Chapter 8 of the "Traffic Signs Manual".
 - Detailed Risk Assessment to be carried out prior to the installation of Traffic Management System.
 - Exact sign positions to be agreed on site.
 - All affected Parties and An Garda Siochana to be notified prior to works commencing.
 - Signs to be positioned so as not to cause an obstruction to other road users.
 - All signs to be faced with retro-reflective material to class ref 2 of EN 12899.
 - "End of Roadworks" sign placed 20m to 50m from end of works area.
 - Emergency routes will be maintained.



Rev:	Description:	Date:	Job Details:	Drawing:	Dwg no:
			Proposed Traffic Management Pla for Irish Life 10k Run, Swords Dublin	TMP for "Road Closed" System at Ennis Lane	09
			Sheet:	Drawn By:	Rev:
			CAD File ref.:	DM	
				Date:	Scale:
				April 2022	As Shown