

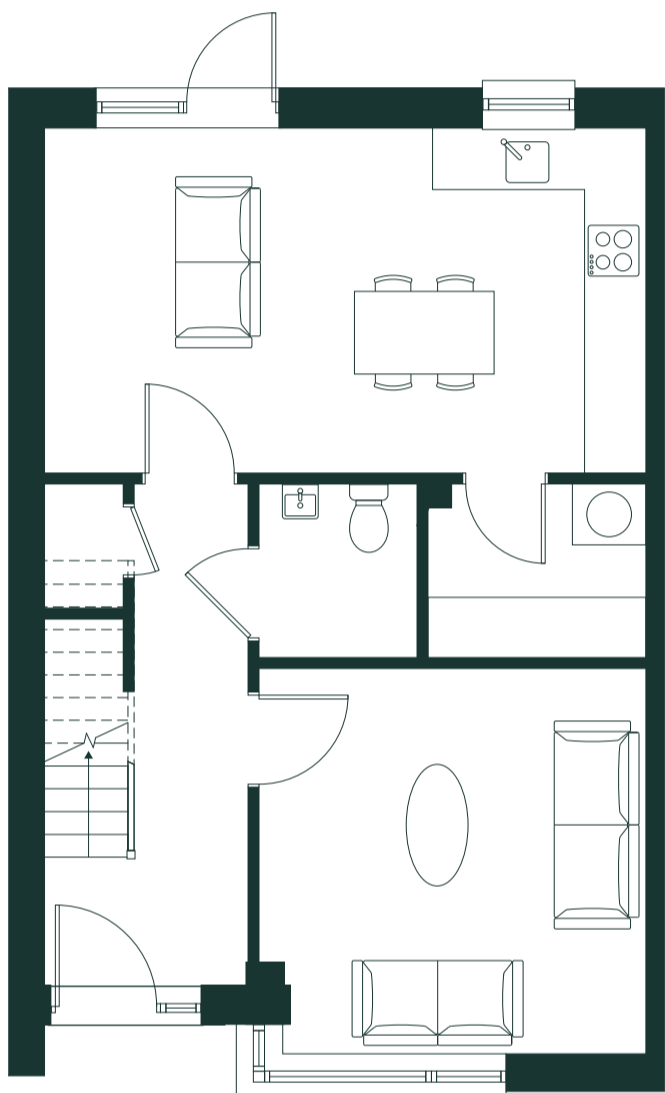


SEA HOLLY

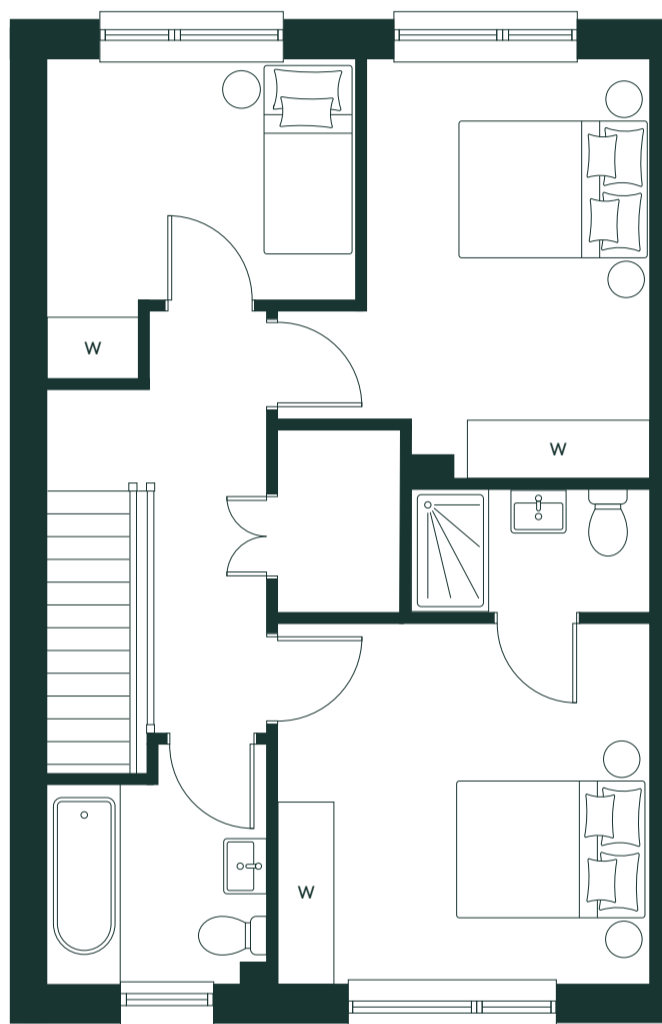
3 Bedroom [H3EA]

Two-Storey / Terrace

107 sq.m | 1,153 sq.ft



Ground Floor



First Floor

Aster Park

RUSH

ballymore.

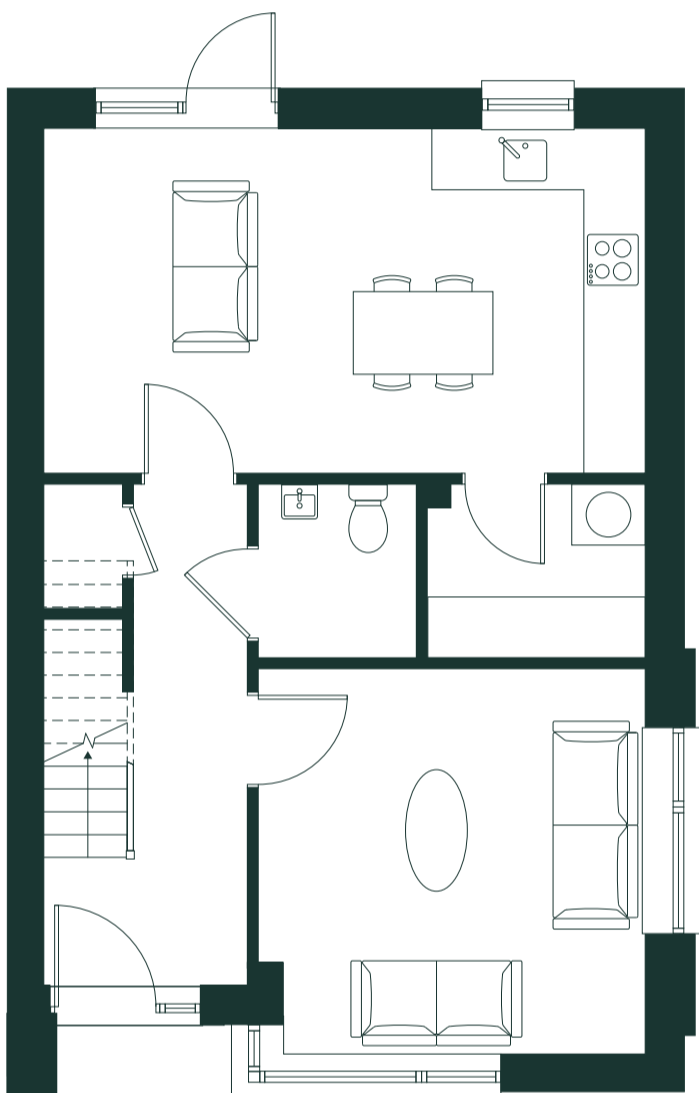


SEA HOLLY

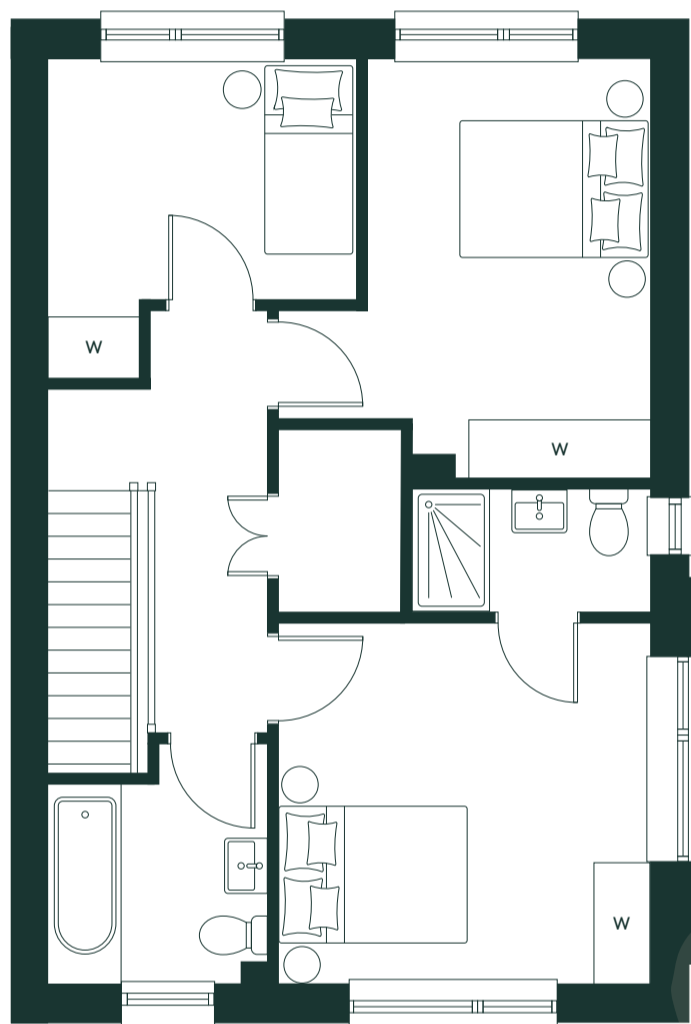
3 Bedroom [H3GB]

Two-Storey / End of Terrace

107 sq.m | 1,153 sq.ft



Ground Floor



First Floor

Aster Park

R U S H

ballymore.

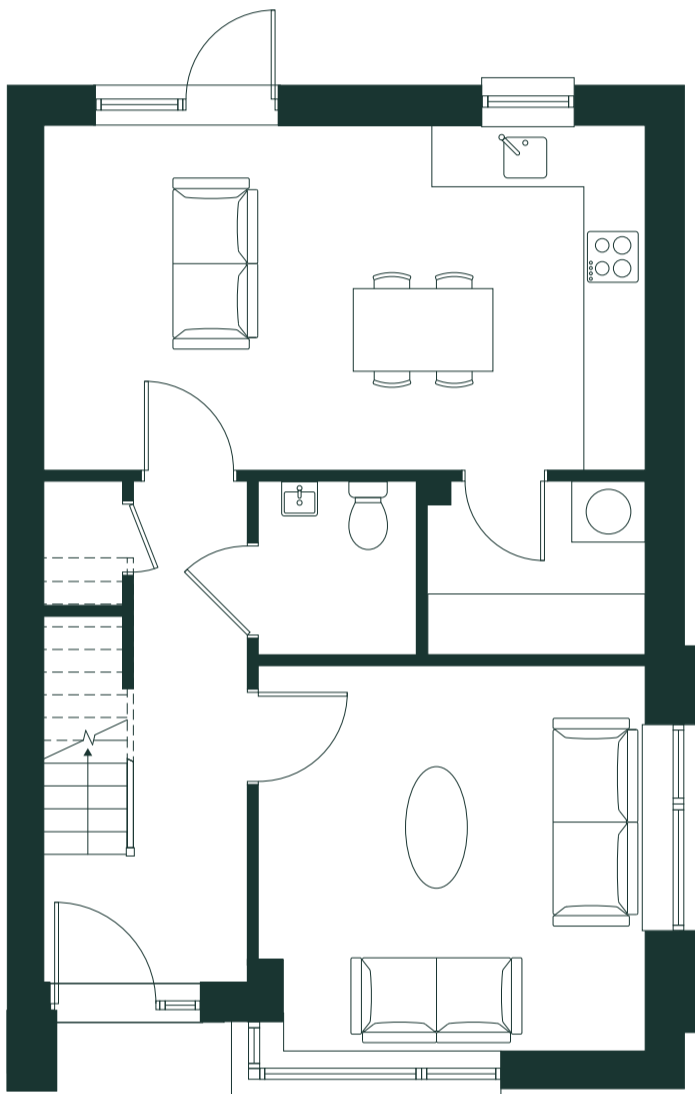


SEA HOLLY

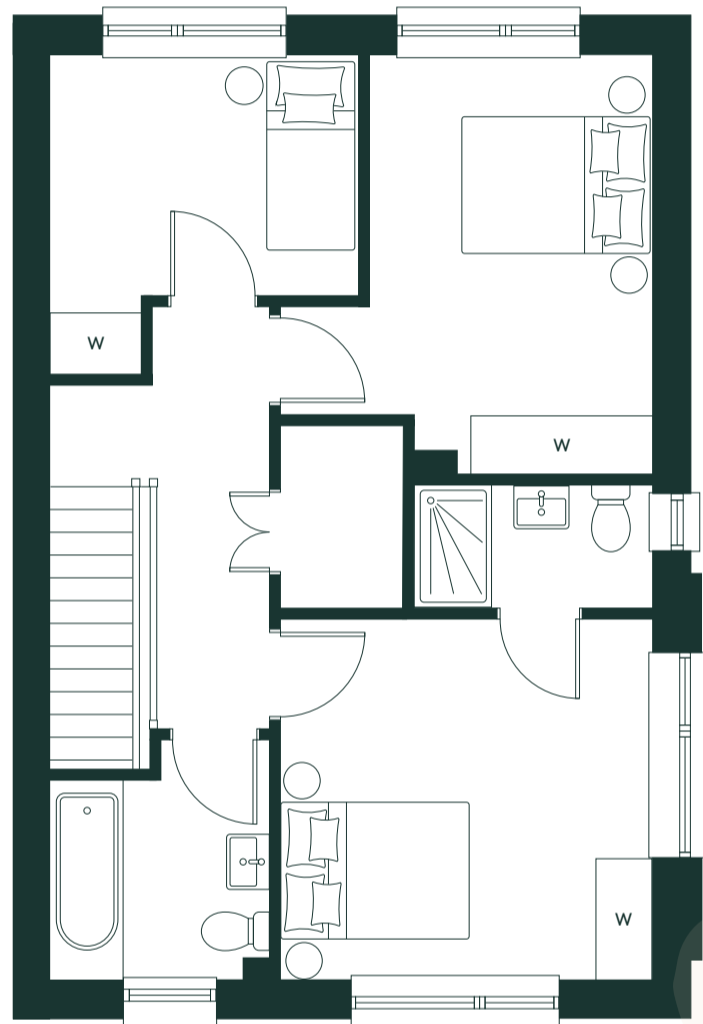
3 Bedroom [H3GB]

Two-Storey / Semi-Detached

107 sq.m | 1,153 sq.ft



Ground Floor



First Floor

Aster Park

R U S H

ballymore.

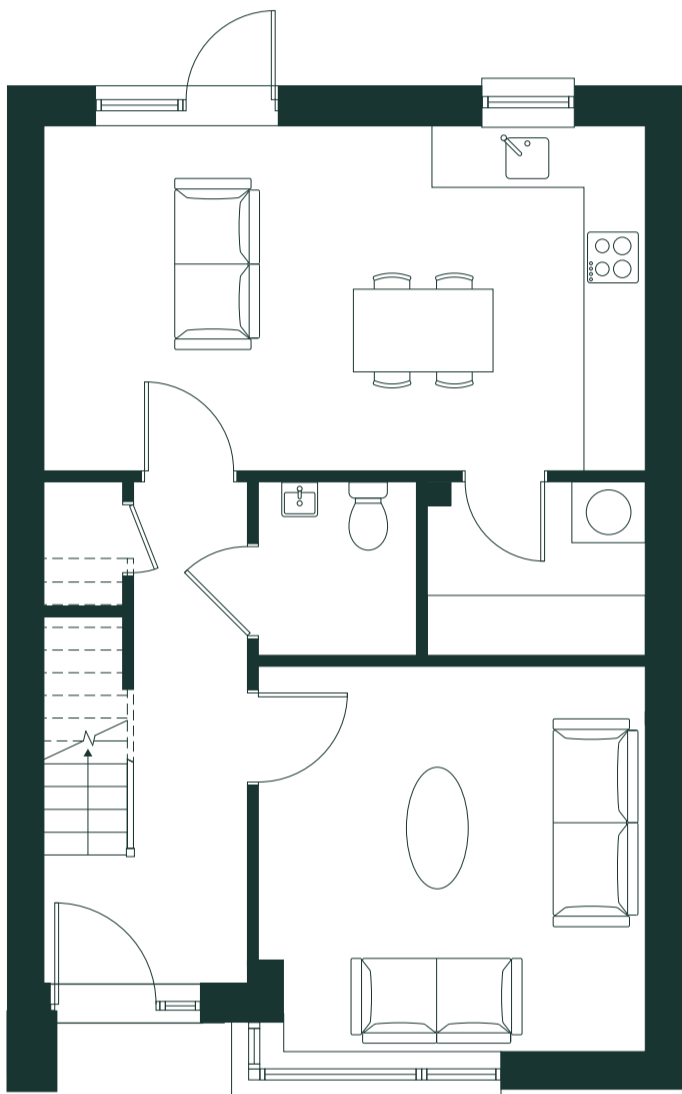


SEA HOLLY

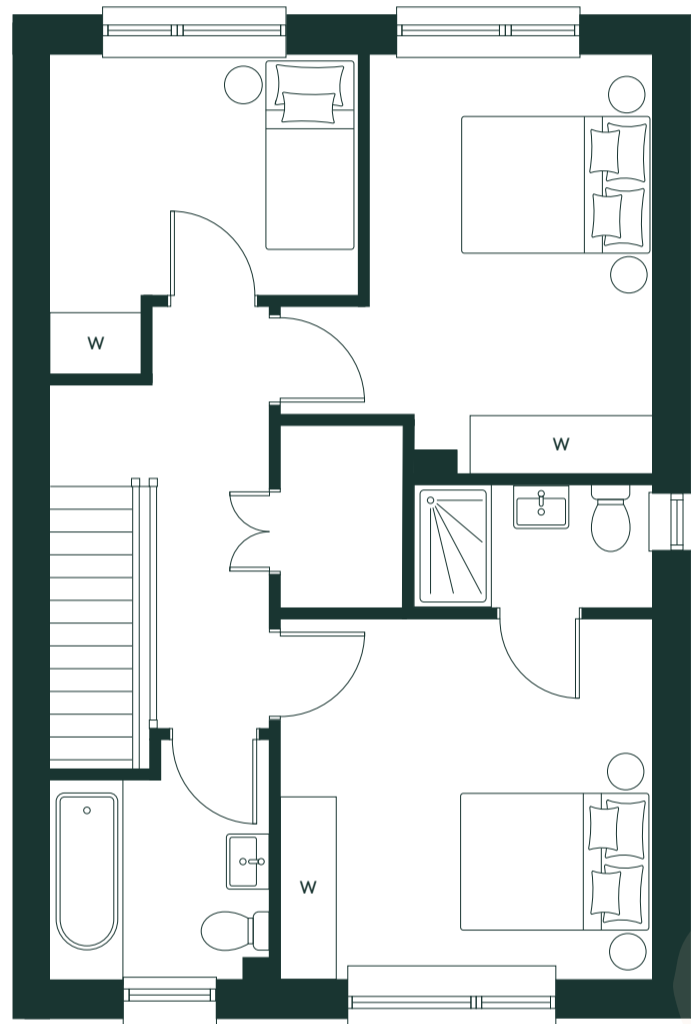
3 Bedroom [H3GC]

Two-Storey / End of Terrace

107 sq.m | 1,153 sq.ft



Ground Floor



First Floor

Aster Park

R U S H

ballymore.

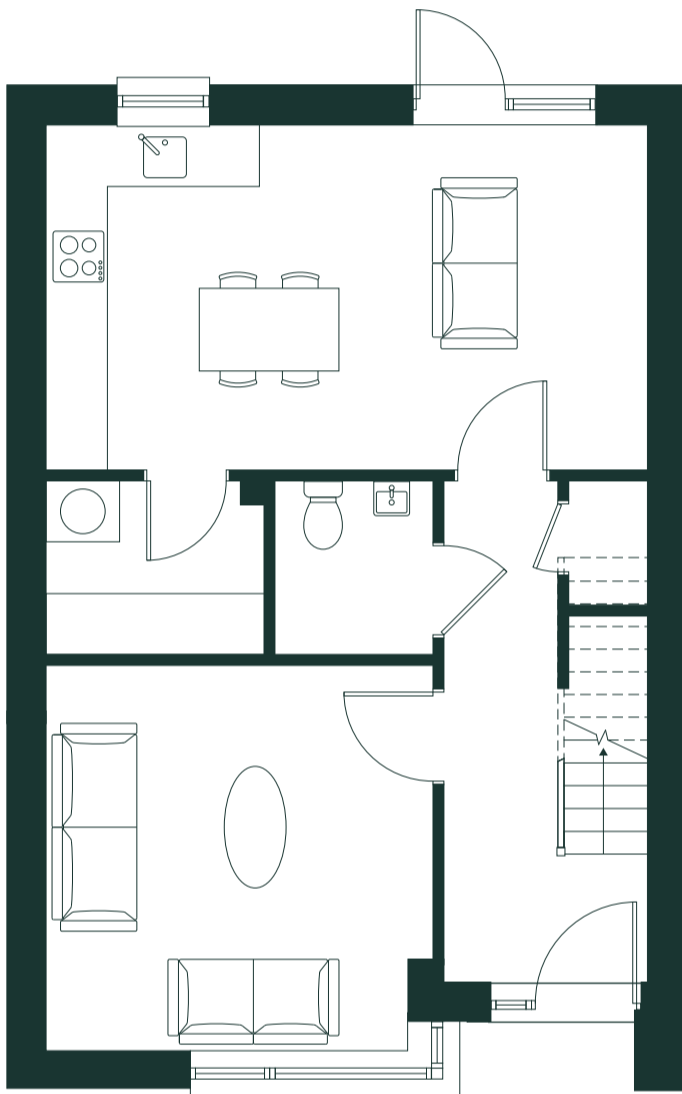


SEA HOLLY

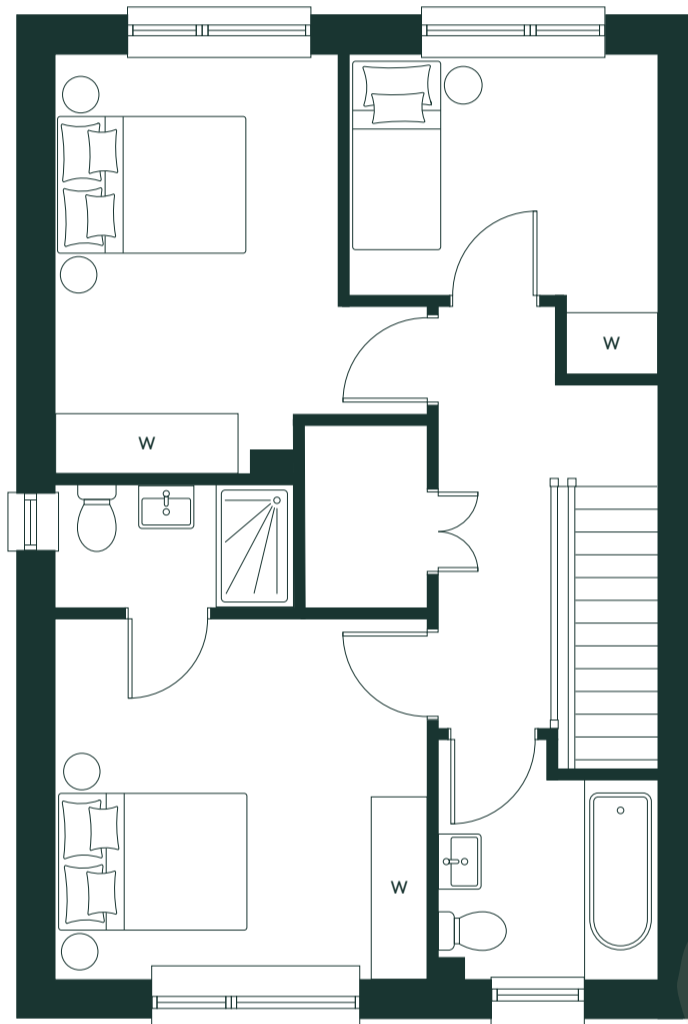
3 Bedroom [H3HA]

Two-Storey / End of Terrace

107 sq.m | 1,153 sq.ft



Ground Floor



First Floor

Aster Park

RUSH

ballymore.

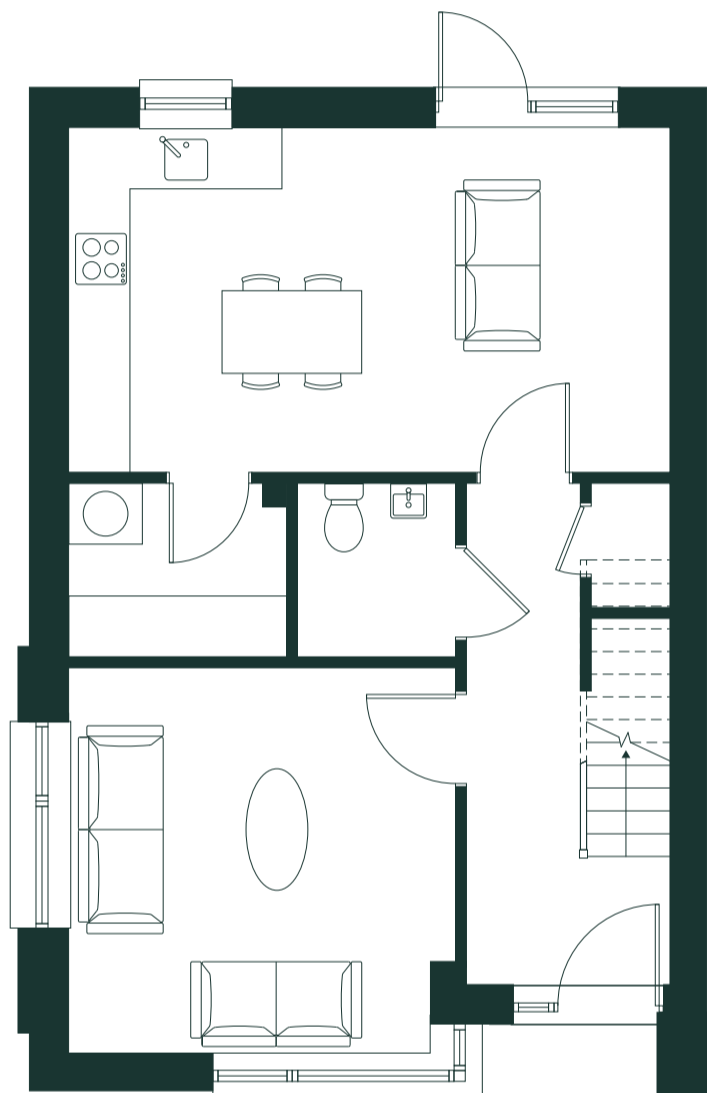


SEA HOLLY

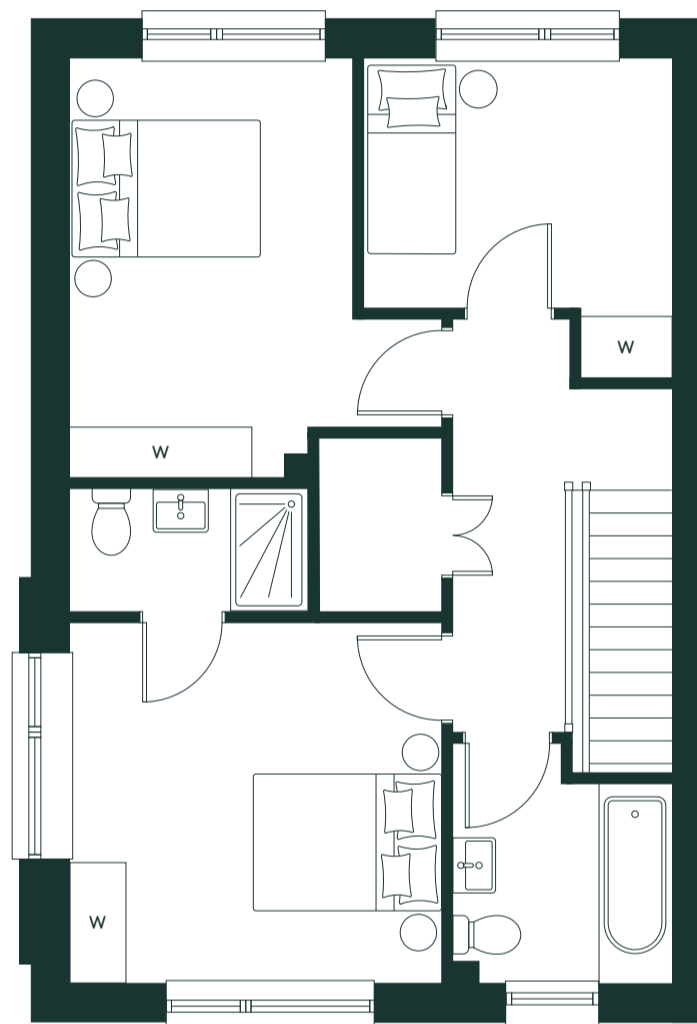
3 Bedroom [H3HB]

Two-Storey / Semi-Detached

107 sq.m | 1,153 sq.ft



Ground Floor



First Floor

Aster Park

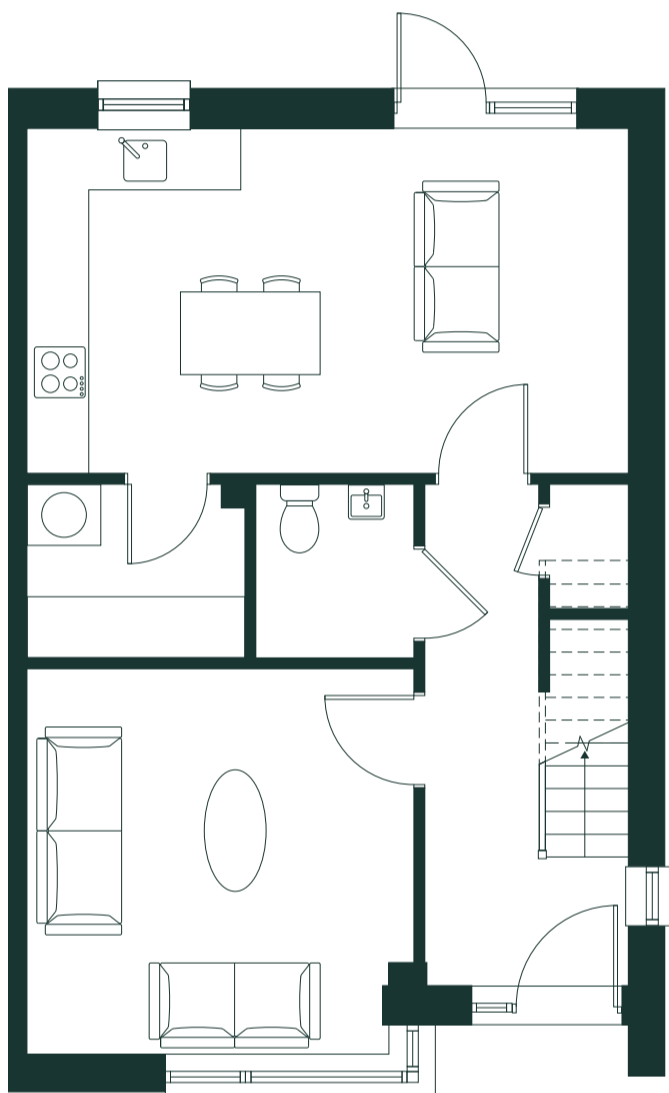
R U S H

ballymore.

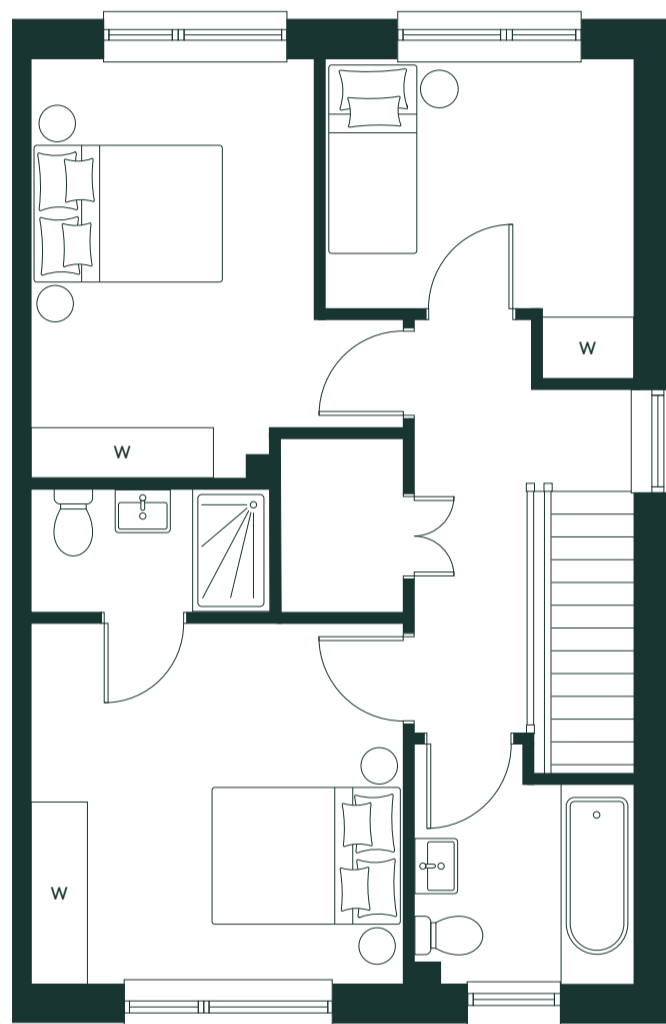


SEA HOLLY

3 Bedroom [H3HC]
Two-Storey / End of Terrace
107 sq.m | 1,153 sq.ft



Ground Floor



First Floor

Aster Park

R U S H

ballymore.