



Background Information on Drainage Features

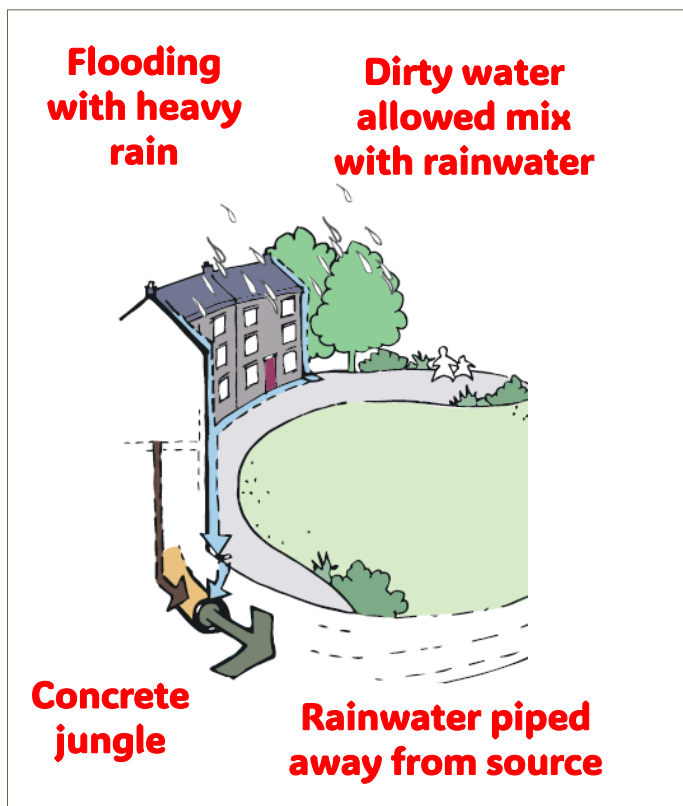


Fingal County Council Bloom 2024 'Coming Home to Nature' Show Garden

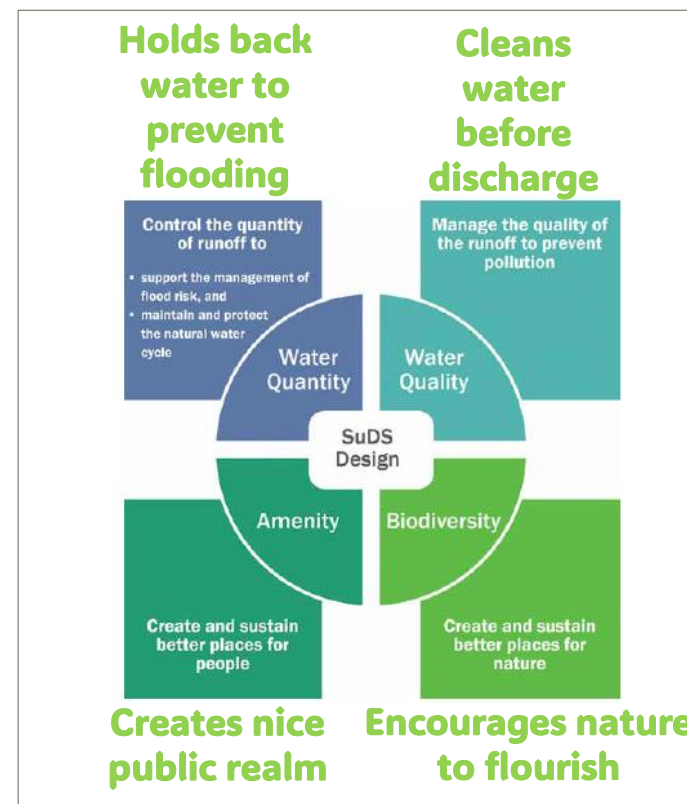


What are SuDS?

'Sustainable Drainage or SuDS is a way of managing rainfall that minimises the negative impacts on the quantity and quality of runoff whilst maximising the benefits of amenity and biodiversity for people and the environment'.



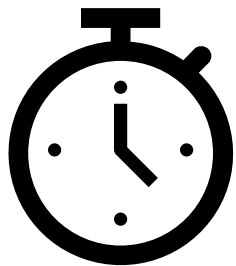
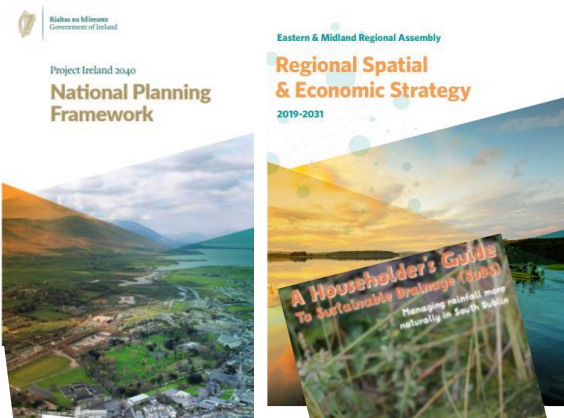
Move away from pipes and tanks to more nature-based solutions



Why we incorporate SuDS?

There has been an ongoing move away from pipes and tanks, towards more natural solutions for surface water drainage. This has been supported by many policy documents in Fingal and beyond.

This has been supported by many policy documents in Fingal and beyond.



Types of SuDS Features



Permeable Paving

Permeable Pavement

Hard surfaces can be designed to allow water to pass through, rather than run off the surface. This allows the water to be naturally treated to remove pollutants and stored in the stone beneath the paving.

Green Roofs

Roofs can be planted to form green roofs which soak up some rain and filter out pollutants. They can also be designed as 'brown roofs' which allow nature to colonise naturally or even 'blue roofs' which have valuable wetland habitat on them.



Green Roofs

Raingardens & Bioretention

These planted depressions can store water when it rains but look beautiful all year round. Bioretention features have additional gravel filtration layers to treat the extra pollution from roads and car parks.



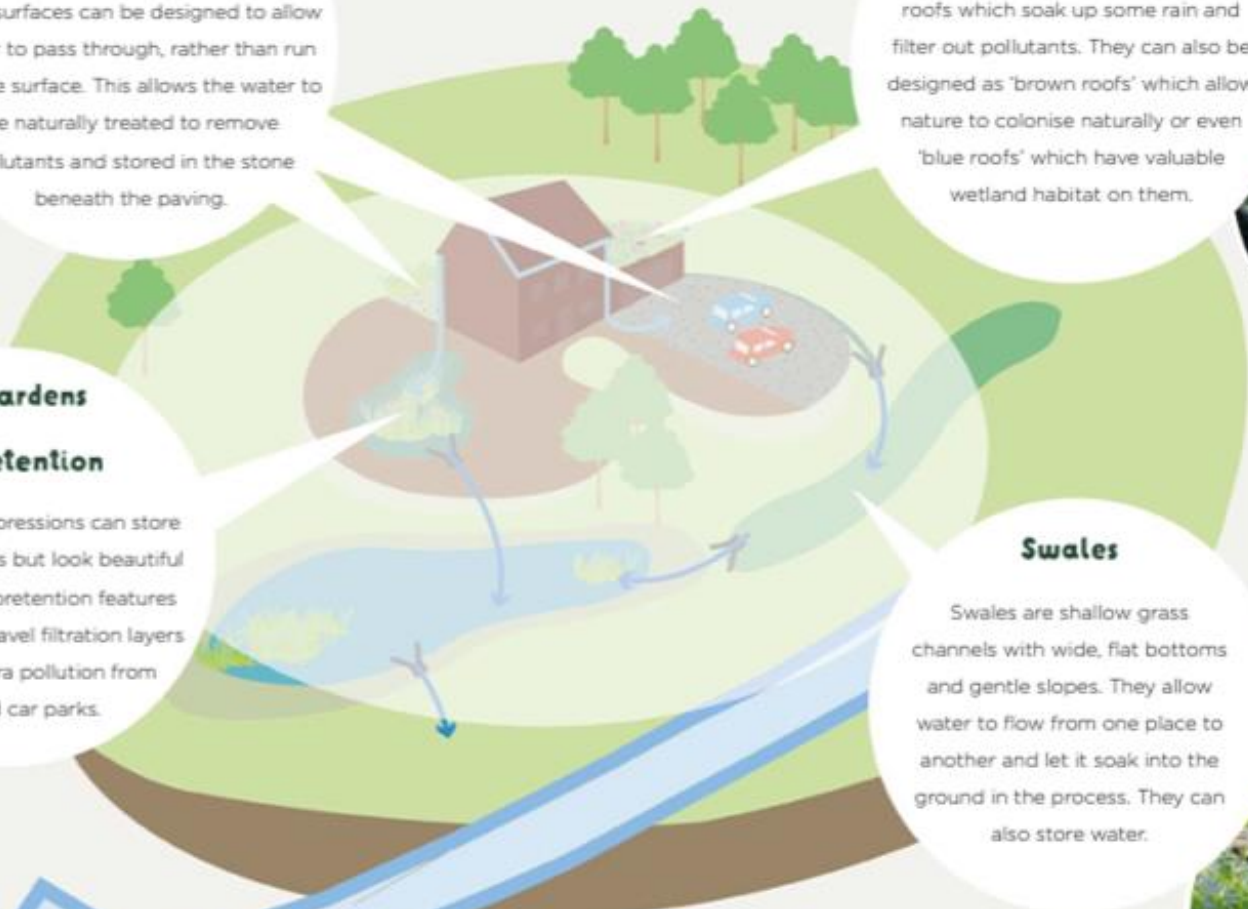
Rain Gardens & Bioretention Areas

Swales

Swales are shallow grass channels with wide, flat bottoms and gentle slopes. They allow water to flow from one place to another and let it soak into the ground in the process. They can also store water.



Swales





Where are SuDS in this garden?





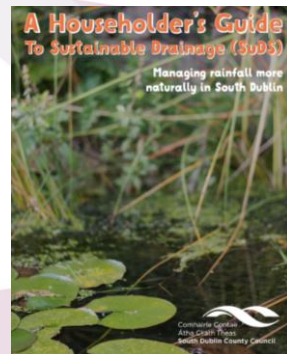
Further Information & Links

www.unisdr.org/preventionweb/files/49357_ciriareport753thesudsmanualv5.comp.pdf

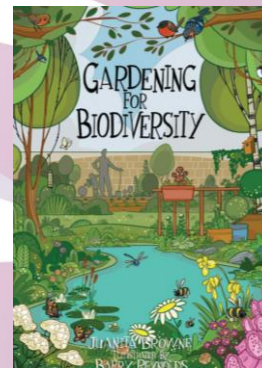


www.fingal.ie/sites/default/files/2023-10/Appendices%2030.08.23_WEB.pdf
(appendix 11)

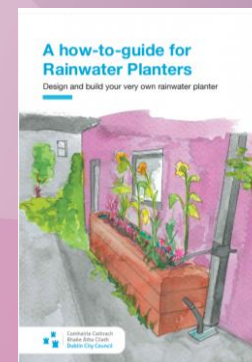
www.gov.ie/pdf/?file=https://assets.gov.ie/219872/409cd225-5afc-44b8-a7b1-bb595632a904.pdf



www.sdcc.ie/en/services/environmental-health/water-services/sustainable-drainage-systems/sdcc-householders-guide-to-sustainable-drainage-suds-.pdf



www.laois.ie/wp-content/uploads/Garden-Wildlife-Booklet-WEB-17MB.pdf



www.dublincity.ie/sites/default/files/2021-04/a-how-to-guide-to-rainwater-planters-english.pdf