

**Comhairle Contae
Fhine Gall**
Fingal County
Council



safer Halloween



Comhairle Contae
Fhine Gall
Fingal County
Council





FINGAL FESTIVAL OF FIRE

THURSDAY
31ST OCTOBER

SWORDS TOWN PARK, BEHIND THE CASTLE
7PM SCARY DISCO, 7.30PM FIREWORKS

MALAHIDE CASTLE
7PM SCARY DISCO, 7.30PM FIREWORKS

BALBRIGGAN - BREMORE CASTLE
7PM SCARY DISCO, 7.30PM FIREWORKS

MILLENNIUM PARK, BLANCHARDSTOWN
7PM SCARY DISCO, 7.30PM FIREWORKS

FIND OUT MORE
EVENTSINFINGAL.IE

MAKE SURE TO WEAR YOUR HALLOWEEN COSTUME AND BRING YOUR TORCH

Around **3,000**
people will attend Fingal Safer
Halloween events in 2024



44 Community groups
and centres hosting Safer
Halloween Events across
Fingal in 2024



Bonfire Material Removal / Report Stockpiling

Bonfires and the burning of waste are illegal. Fingal County Council spends up to €150,000 each year to clean up & repair damage caused by bonfires. This money is better invested in playgrounds, playing pitches, community centres and in the planting of trees and flowers.

Please report stockpiling to the relevant Operations Area by phoning **01 890 5000** or alternatively email:

Balbriggan/Swords Ops: BalSwoOpArea@fingal.ie

Malahide/Howth Ops: HowMalOpArea@fingal.ie

Castleknock/Mulhuddart Ops: casmuloparea@fingal.ie

Stockpiling in commercial / retail locations (shop, restaurants, hotels) should be reported to Fingal Litter Management Section at **01 890 5000** or by email: **environment@fingal.ie**

Halloween Amnesty at Recycling Centres

Household combustible materials (beds, sofas, wooden doors etc.) will be accepted free of charge at Fingal County Council's Recycling Centres for residents of Fingal (will require proof of address) from **Wednesday 23rd to Thursday the 31st October**. Centre times including:

Coolmine Recycling Centre from 9am to 4pm (last vehicle entry 3.00pm) from Monday to Saturday. It is closed on Sundays and Bank Holidays.

Coolmine Recycling Centre is located in Coolmine Industrial Estate, Dublin 15, D15 F7X9. Beside Coolmine Fire Station.
Telephone: (01) 890 5986

Estuary Recycling Centre from 8am to 8pm from Monday to Friday (last vehicle entry 7.00pm), and from 8am to 6pm on the Saturday (last vehicle entry 5.00pm).

Estuary Recycling Centre is located in Swords.
Beside Swords Business Park, K67 V003
Telephone: (01) 890 5985

For further information visit <https://www.fingal.ie/recycling-centres>

Go Green This Halloween

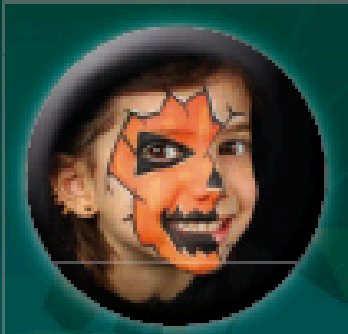
Decorations

Make your own or reuse spooky decorations instead of buying.



Costumes

Buy second-hand, reuse old outfits, or make your own ghoulish costumes! Use face paints rather than buying plastic masks.



Treats

Buy locally produced foods, sweets and devil treats. Consider minimal packaging or recycled materials.



Pumpkins

Buy pumpkins from local farms or grow your own. Use everything from toasting seeds to pumpkin soup and a ghostly pasta bake.



Transportation

Trick or Treat by walking around your locality instead of the dreaded drive.



Compost

Consider composting all your creepy organic matter and recycling other items.



Recycle

Your leftover ghastly food, cans, plastic and glass bottles can be recycled. Add them all to your recycling bin.



Halloween Hazards

The Lighting Of Bonfires Is Prohibited
Don't Allow A Bonfire On Your Local Open Space

Tips On How To Stay Safe:



Never use a bonfire as an opportunity to dump your waste as most household goods can cause poisonous pollutants.



Never light a bonfire near residential or commercial areas & keep away from the cables and pylons.



Bonfires destroy parks, playing pitches trees and flowers. A bonfire should never contain:
Tyres • Aerosols • Foam Filled Furniture
Batteries • Bottles • Tins of Paint



Keep your pets indoors out of harms way as this can be frightening & daunting for them.



Motorists should be extra vigilant on Halloween for children crossing roads & moving between parked cars.



In case of an emergency dial 999 or 112 for the Fire Brigade immediately.

This **Halloween** let's keep everyone **Safer** as well as Spooooky