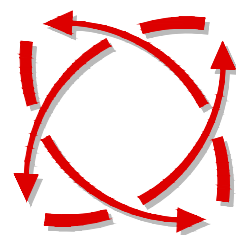


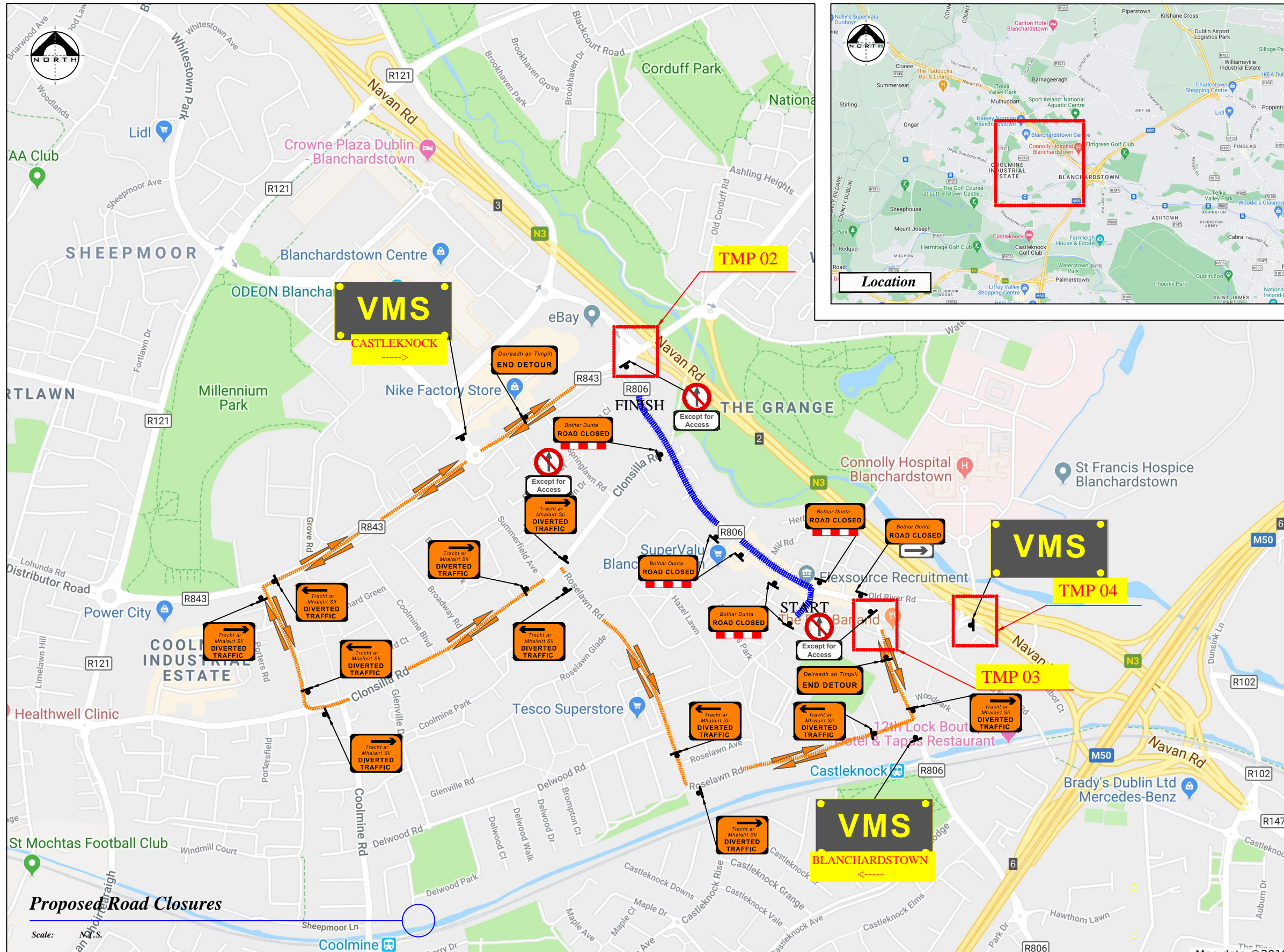
***PROPOSED TRAFFIC  
MANAGEMENT SCHEME***

***for***

***St Patrick`s Day  
Blanchardstown  
2025***



***FREEFLOW  
TRAFFIC  
MANAGEMENT***



**LEGEND**

- Sign Location
- Traffic Cones
- Approved Barrier
- Event Route
- Diversion Route

Design Parameters:	LV-1	LV-2
1. Statutory Speed of the Road	30	30-60
2. Distance between Advance Signs	25m	25m
3. Number of Advance Signs	2	3
4. Minimum Visibility of Signs	50m	50m
5. Longitudinal Safety Zone	5m	25m
6. Lateral Safety Zone	0.5m	0.5m
7. Leading Taper	45°	45°
8. Maximum at Tapers Cone Space	1m	1m
9. Maximum Longitudinal Cone Space	6m	6m

- Note:**
- All signs to comply with Chapter 8 of the "Traffic Signs Manual"-Guidance Document.
  - All Traffic Management to be carried out in accordance with Chapter 8 of the "Traffic Signs Manual".
  - Detailed Risk Assessment to be carried out prior to the installation of Traffic Management System.
  - The Contractor shall be responsible for providing all required ramp access to all changes in road surface level where traffic runs on a temporary surface and also for cycle/pedestrian ramps where footpath, cycle paths or any surface which has a level discontinuity as a result of the works.
  - Exact sign positions to be agreed on site.
  - All safety zones to be maintained at all times.
  - All affected Parties and An Garda Síochána to be notified prior to works commencing.
  - Signs to be positioned so as not to cause an obstruction to other road users.
  - Minimum lane width of 3,25m to be maintained at all times.
  - All signs dimensions to be per Table 8.2.5 and faced with retro-reflective material to class ref 2 of EN 12899.
  - All delineation devices should be designed in accordance with IS EN 13422.
  - All signage shall be per Tables 8.2.1, 8.2.2 and 8.2.4 of the Chapter 8 "Traffic Signs Manual"
  - Safety barrier to be in accordance with IS EN 1317.
  - "End of Roadworks" sign placed 20m to 50m from end of works area.
  - Road Closures to be manned.



Rev:	Description:	Date:

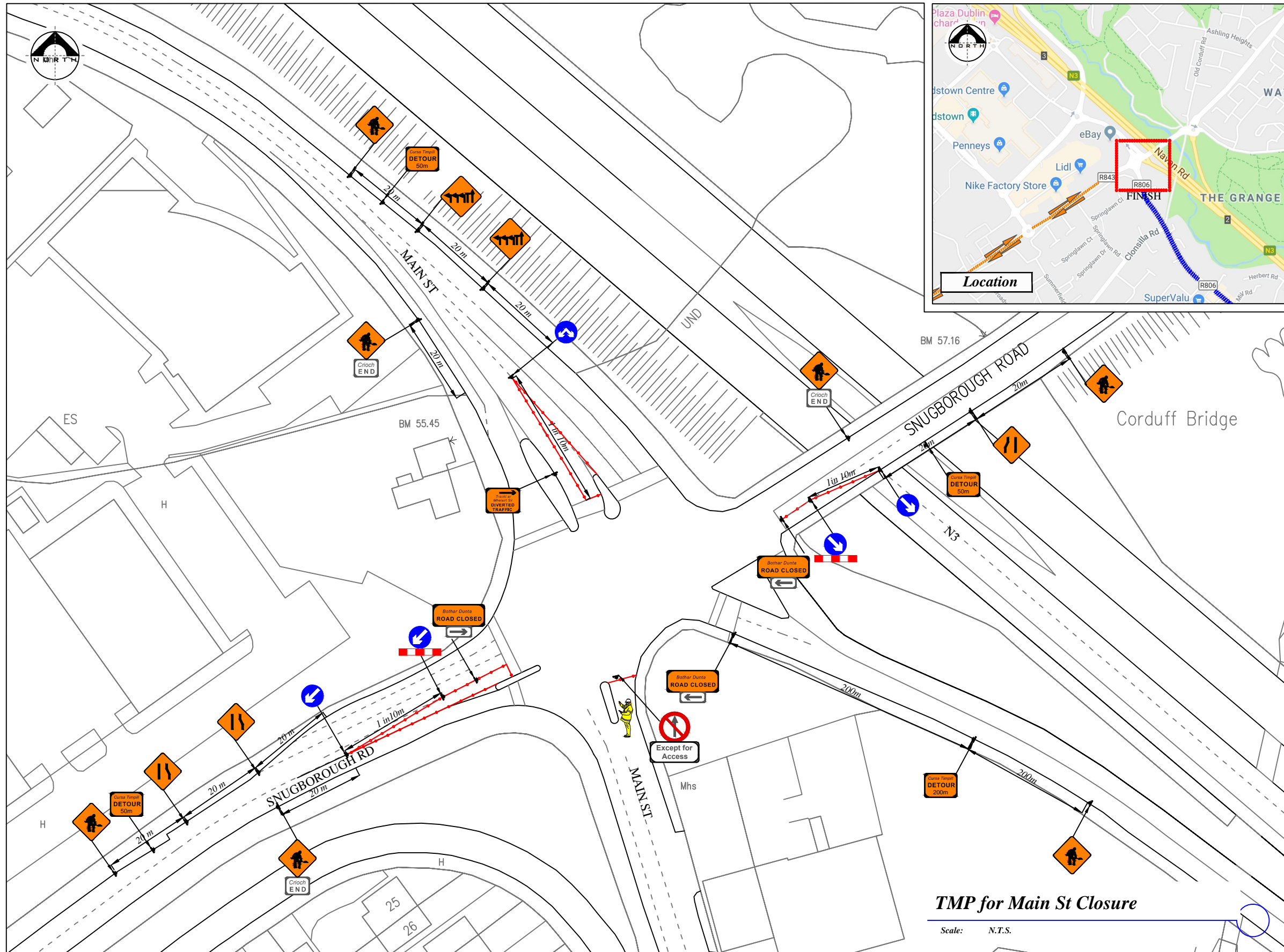
**Job Details:**  
 Proposed Traffic Management Plan for Saint Patrick Day Parade at Blanchardstown, Dublin 2025

Sheet: CAD File ref.:

**Drawing:**  
 Proposed Road Closures

Drawn By: DM  
 Date: January 2025  
 Scale: As Shown

Dwg no: 01  
 Rev:   
 Scale: As Shown



**LEGEND**

- Sign Location
- Traffic Cones
- Approved Barrier
- Event Route
- Diversion Route

**Design Parameters:**

	LV-1	LV-2
1. Statutory Speed of the Road	30	30-60
2. Distance between Advance Signs	25m	25m
3. Number of Advance Signs	2	3
4. Minimum Visibility of Signs	50m	50m
5. Longitudinal Safety Zone	5m	25m
6. Lateral Safety Zone	0.5m	0.5m
7. Leading Taper	45°	45°
8. Maximum at Tapers Cone Space	1m	1m
9. Maximum Longitudinal Cone Space	6m	6m

- Note:**
- All signs to comply with Chapter 8 of the "Traffic Signs Manual"-Guidance Document.
  - All Traffic Management to be carried out in accordance with Chapter 8 of the "Traffic Signs Manual".
  - Detailed Risk Assessment to be carried out prior to the installation of Traffic Management System.
  - The Contractor shall be responsible for providing all required ramp access to all changes in road surface level where traffic runs on a temporary surface and also for cycle/pedestrian ramps where footpath, cycle paths or any surface which has a level discontinuity as a result of the works.
  - Exact sign positions to be agreed on site.
  - All safety zones to be maintained at all times.
  - All affected Parties and An Garda Síochána to be notified prior to works commencing.
  - Signs to be positioned so as not to cause an obstruction to other road users.
  - Minimum lane width of 3,25m to be maintained at all times.
  - All signs dimensions to be per Table 8.2.5 and faced with retro-reflective material to class ref 2 of EN 12899.
  - All delineation devices should be designed in accordance with IS EN 13422.
  - All signage shall be per Tables 8.2.1, 8.2.2 and 8.2.4 of the Chapter 8 "Traffic Signs Manual"
  - Safety barrier to be in accordance with IS EN 1317.
  - "End of Roadworks" sign placed 20m to 50m from end of works area.
  - Road Closures to be manned.

**TMP for Main St Closure**  
Scale: N.T.S.



Rev:	Description:	Date:

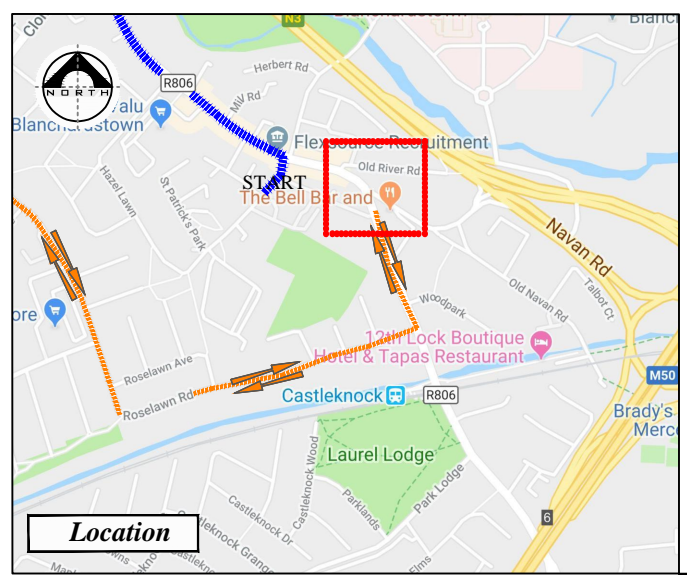
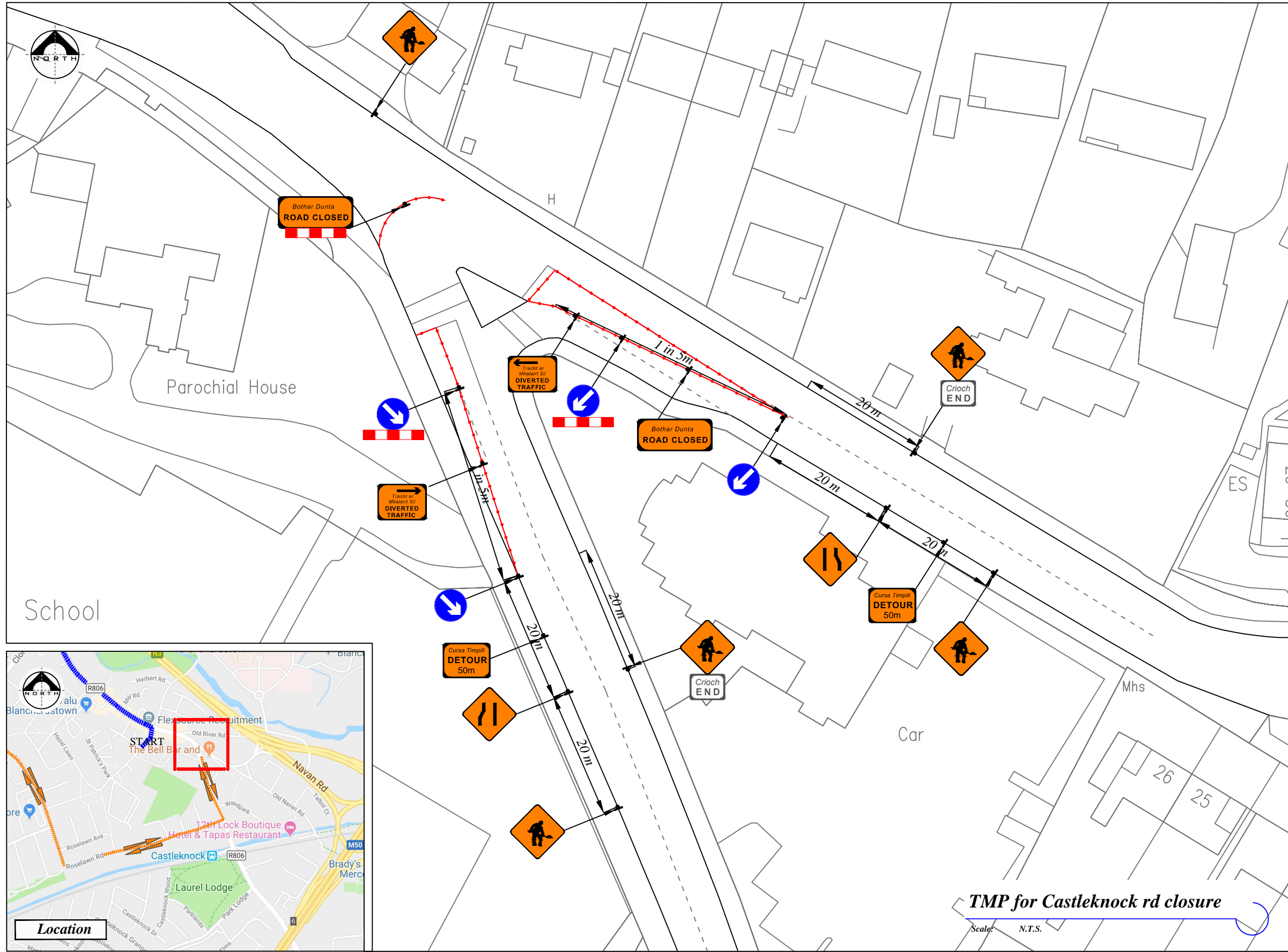
**Job Details:**  
Proposed Traffic Management Plan for Saint Patrick Day Parade at Blanchardstown, Dublin 2025

Sheet: CAD File ref.:

**Drawing:**  
TMP for Main st Closure

Drawn By: DM  
Date: January 2025

Dwg no: 02  
Rev:  
Scale: As Shown



**LEGEND**

- Sign Location
- Traffic Cones
- Approved Barrier
- Event Route
- Diversion Route

Design Parameters:	LV-1	LV-2
1. Statutory Speed of the Road	30	30-60
2. Distance between Advance Signs	25m	25m
3. Number of Advance Signs	2	3
4. Minimum Visibility of Signs	50m	50m
5. Longitudinal Safety Zone	5m	25m
6. Lateral Safety Zone	0.5m	0.5m
7. Leading Taper	45°	45°
8. Maximum at Tapers Cone Space	1m	1m
9. Maximum Longitudinal Cone Space	6m	6m

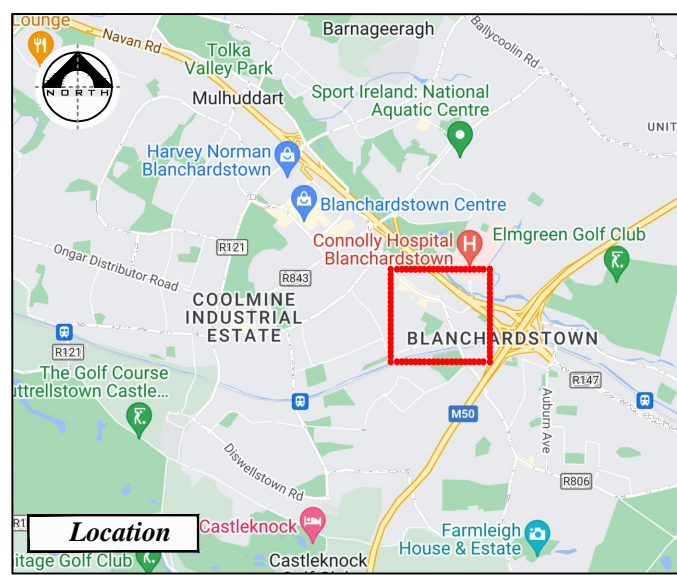
- Note:**
- All signs to comply with Chapter 8 of the "Traffic Signs Manual"-Guidance Document.
  - All Traffic Management to be carried out in accordance with Chapter 8 of the "Traffic Signs Manual".
  - Detailed Risk Assessment to be carried out prior to the installation of Traffic Management System.
  - The Contractor shall be responsible for providing all required ramp access to all changes in road surface level where traffic runs on a temporary surface and also for cycle/pedestrian ramps where footpath, cycle paths or any surface which has a level discontinuity as a result of the works.
  - Exact sign positions to be agreed on site.
  - All safety zones to be maintained at all times.
  - All affected Parties and An Garda Síochána to be notified prior to works commencing.
  - Signs to be positioned so as not to cause an obstruction to other road users.
  - Minimum lane width of 3,25m to be maintained at all times.
  - All signs dimensions to be per Table 8.2.5 and faced with retro-reflective material to class ref 2 of EN 12899.
  - All delineation devices should be designed in accordance with IS EN 13422.
  - All signage shall be per Tables 8.2.1, 8.2.2 and 8.2.4 of the Chapter 8 "Traffic Signs Manual"
  - Safety barrier to be in accordance with IS EN 1317.
  - "End of Roadworks" sign placed 20m to 50m from end of works area.
  - Road Closures to be manned.

TMP for Castleknock rd closure

Scale: N.T.S.



Rev:	Description:	Date:	Job Details:	Drawing:	Dwg no:
			Proposed Traffic Management Plan for Saint Patrick Day Parade at Blanchardstown, Dublin 2025	TMP for Castleknock rd closure	03
			Sheet:	Drawn By:	Rev:
			CAD File ref.:	DM	
				Date:	Scale:
				January 2025	As Shown



**LEGEND**

- Sign Location
- Traffic Cones
- Approved Barrier
- Event Route
- Diversion Route

Design Parameters:	LV-1	LV-2
1. Statutory Speed of the Road	30	30-60
2. Distance between Advance Signs	25m	25m
3. Number of Advance Signs	2	3
4. Minimum Visibility of Signs	50m	50m
5. Longitudinal Safety Zone	5m	25m
6. Lateral Safety Zone	0.5m	0.5m
7. Leading Taper	45°	45°
8. Maximum at Tapers Cone Space	1m	1m
9. Maximum Longitudinal Cone Space	6m	6m

- Note:**
- All signs to comply with Chapter 8 of the "Traffic Signs Manual"-Guidance Document.
  - All Traffic Management to be carried out in accordance with Chapter 8 of the "Traffic Signs Manual".
  - Detailed Risk Assessment to be carried out prior to the installation of Traffic Management System.
  - The Contractor shall be responsible for providing all required ramp access to all changes in road surface level where traffic runs on a temporary surface and also for cycle/pedestrian ramps where footpath, cycle paths or any surface which has a level discontinuity as a result of the works.
  - Exact sign positions to be agreed on site.
  - All safety zones to be maintained at all times.
  - All affected Parties and An Garda Síochána to be notified prior to works commencing.
  - Signs to be positioned so as not to cause an obstruction to other road users.
  - Minimum lane width of 3,25m to be maintained at all times.
  - All signs dimensions to be per Table 8.2.5 and faced with retro-reflective material to class ref 2 of EN 12899.
  - All delineation devices should be designed in accordance with IS EN 13422.
  - All signage shall be per Tables 8.2.1, 8.2.2 and 8.2.4 of the Chapter 8 "Traffic Signs Manual"
  - Safety barrier to be in accordance with IS EN 1317.
  - "End of Roadworks" sign placed 20m to 50m from end of works area.
  - Road Closures to be manned.



Rev:	Description:	Date:

**Job Details:**  
 Proposed Traffic Management Plan for Saint Patrick Day Parade at Blanchardstown, Dublin 2025

Sheet:      CAD File ref.:

**Drawing:**  
 TMP for Information Signs at Navan rd

Drawn By:      Date:      Dwg no:  
 DM      January 2025      04

Rev:      Scale:  
 As Shown