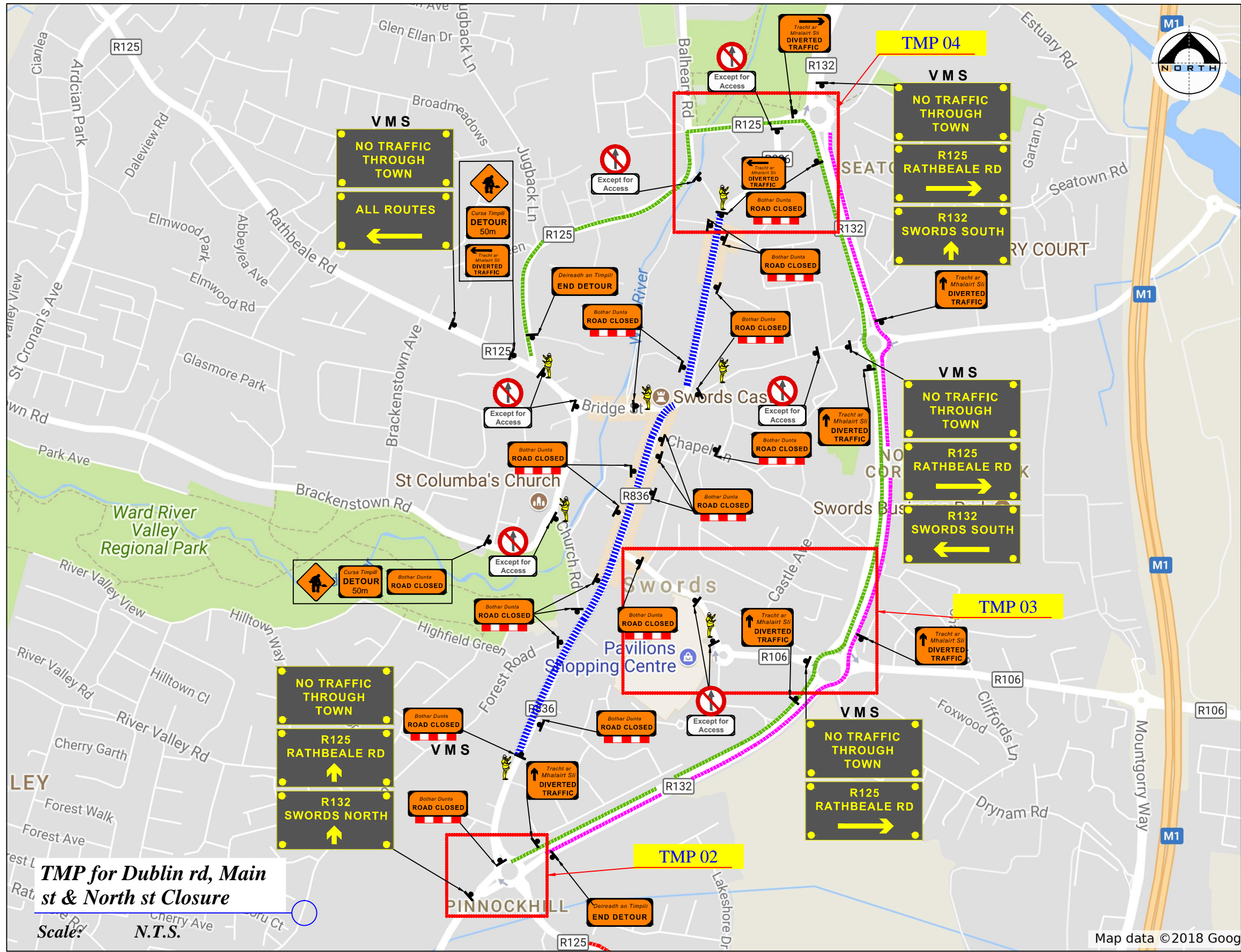


***PROPOSED TRAFFIC
MANAGEMENT SCHEME***

for

***St Patrick`s Parade
in Swords, Co. Dublin
2025***





LEGEND

- Sign Location
- Event Route
- Diversion Routes
- Traffic Cones
- VMS Variable Message Sign
- TMO - Traffic Management Operative

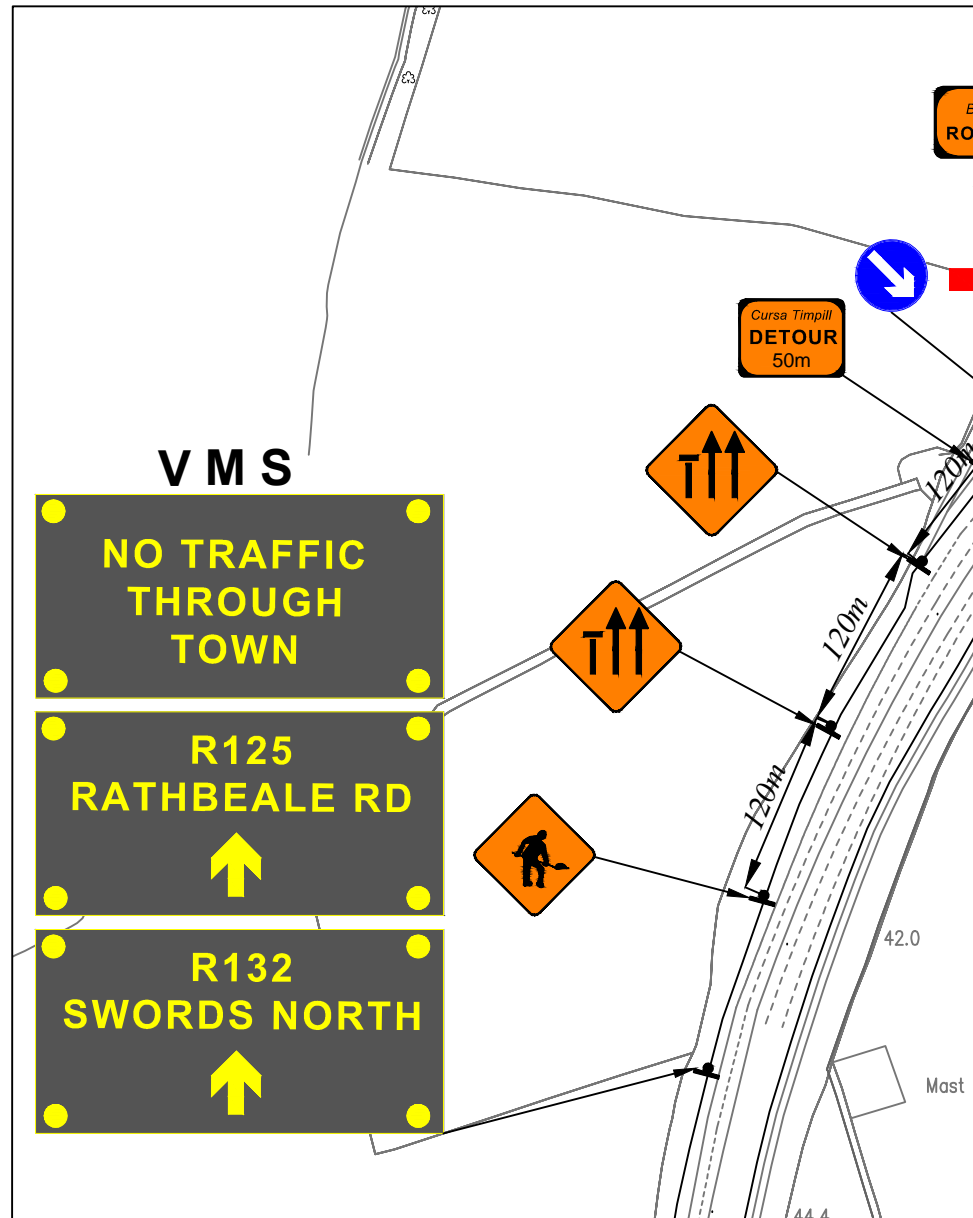
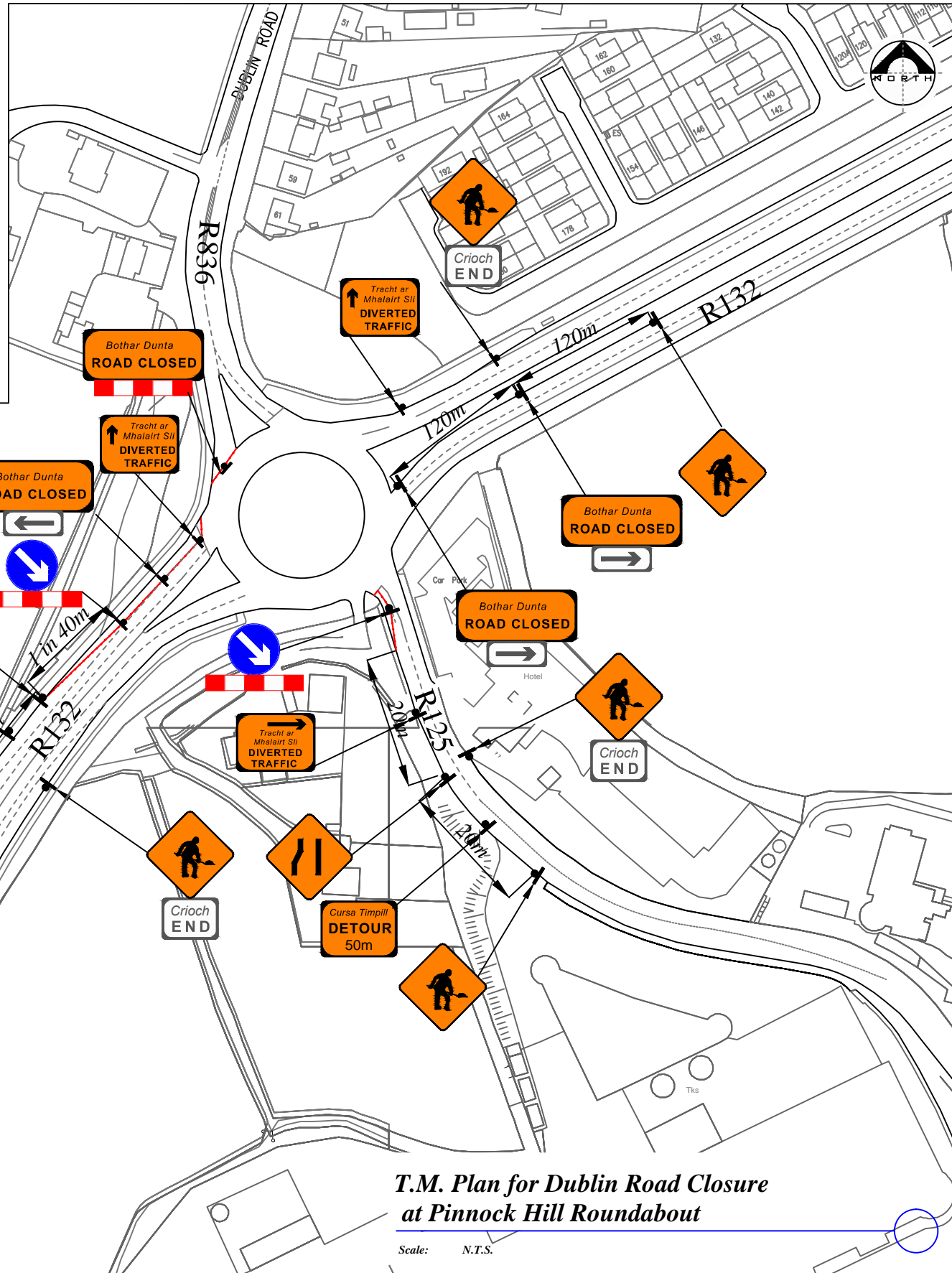
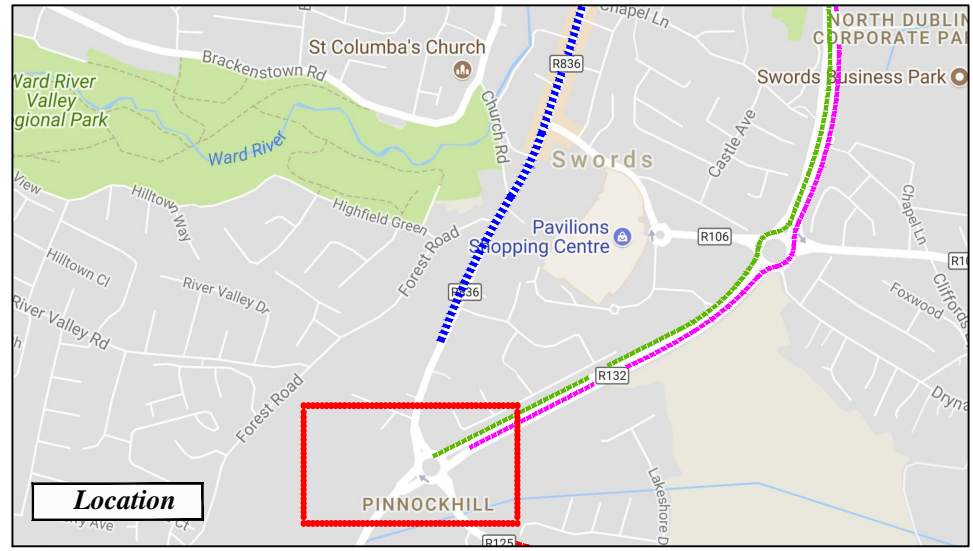
Works TTM type:	Static Type A				
	Design Type A: >12h				
Design Parameters:	LV-1 (I)	LV-1 (III)	LV-1 (IV)	LV-2 (I)	LV-2 (II)
1. Minimum Sign Size mm	450	600	600	600	750
2. Statutory Speed of the Road	30km/h	50	60	80	100
3. Distance between Advance Signs	10m	20m	20m	120m	200m
4. Number of Advance Signs	1 (<12h) 2 (>12h)	2	3 (<12h) 2 (>12h)	3 (<12h) 4 (>12h)	3 (<12h) 4 (>12h)
5. Minimum Visibility of Signs	25m	50m	60m	90m	120m
6. Longitudinal Safety Zone	0.5m	5m	15m	45m	60m
7. Lateral Safety Zone	0.5m	0.5m	0.5m	1.2m	1.2m
8. Leading Taper	1in1m	1in5m	1in10m	1in40	1in200
9. Maximum at Tapers Cone Space	1m	3m	3m	3m	3m
10. Maximum Longitudinal Cone Space	3m	3m	6m	12m	12m
11. Lane Width (m)	2.5m	3 (2.5)	3 (2.5)	3 m	3 m
12. Two-way Roadway width (m)	5m	5m	5m	-	-

- Note:**
- All signs to comply with Chapter 8 of the "Traffic Signs Manual"-Guidance Document.
 - All Traffic Management to be carried out in accordance with Chapter 8 of the "Traffic Signs Manual".
 - Detailed Risk Assessment to be carried out prior to the installation of Traffic Management System.
 - The Contractor shall be responsible for providing all required ramp access to all changes in road surface level where traffic runs on a temporary surface and also for cycle/pedestrian ramps where footpath, cycle paths or any surface which has a level discontinuity as a result of the works.
 - Exact sign positions to be agreed on site.
 - All safety zones to be maintained at all times.
 - All affected Parties and An Garda Siochana to be notified prior to works commencing.
 - Signs to be positioned so as not to cause an obstruction to other road users.
 - All delineation devices should be designed in accordance with IS EN 13422.
 - All signage shall be per Tables 8.2.2.2- 8.2.2.9 of the Chapter 8 "Traffic Signs Manual"
 - Safety barrier to be in accordance with IS EN 1317.
 - "End of Roadworks" sign placed 20m to 50m from end of works area.
 - Road Closures to be Manned.

TMP for Dublin rd, Main st & North st Closure
 Scale: N.T.S.



Rev:	Description:	Date:	Job Details:	Drawing:	Dwg no:
			Proposed Traffic Management Plan for St Patrick's Day Parade in Swords 2025	TMP for Dublin rd, Main st & North st Closure	01
			Sheet:	CAD File ref.:	Rev:
			Drawn By:	Date:	Scale:
			DM	January 2025	As Shown



LEGEND

- Sign Location
- Event Route
- Diversion Routes
- Traffic Cones
- VMS Variable Message Sign
- TMO - Traffic Management Operative

Works TTM type:	Static Type A				
	Design Type A: >12h				
Design Parameters:	LV-1 (I)	LV-1 (III)	LV-1 (IV)	LV-2 (I)	LV-2 (II)
1. Minimum Sign Size mm	450	600	600	600	750
2. Statutory Speed of the Road	30km/h	50	60	80	100
3. Distance between Advance Signs	10m	20m	20m	120m	200m
4. Number of Advance Signs	1 (<12h) 2 (>12h)	2	3 (<12h) 2 (>12h)	3 (<12h) 4 (>12h)	3 (<12h) 4 (>12h)
5. Minimum Visibility of Signs	25m	50m	60m	90m	120m
6. Longitudinal Safety Zone	0.5m	5m	15m	45m	60m
7. Lateral Safety Zone	0.5m	0.5m	0.5m	1.2m	1.2m
8. Leading Taper	1m/1m	1m/5m	1m/10m	1m/40	1m/100
9. Maximum at Tapers Cone Space	1m	3m	3m	3m	3m
10. Maximum Longitudinal Cone Space	3m	3m	6m	12m	12m
11. Lane Width (m)	2.5m	3 (2.5)	3 (2.5)	3 m	3 m
12. Two-way Roadway width (m)	5m	5m	5m	-	-

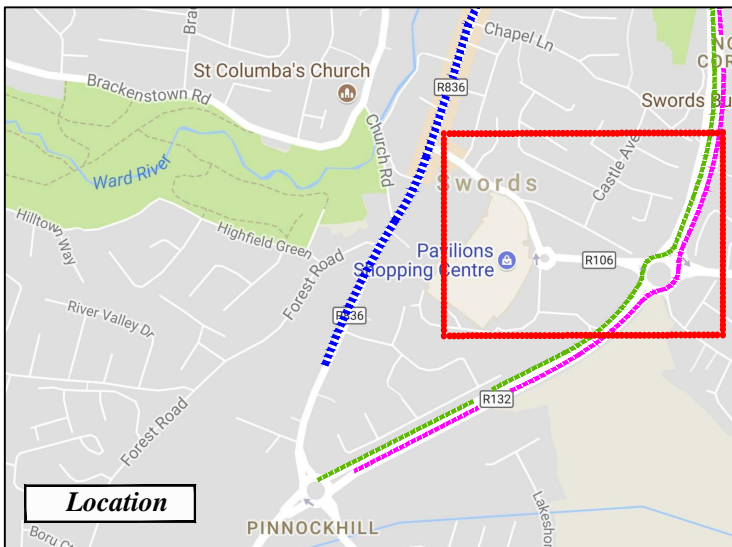
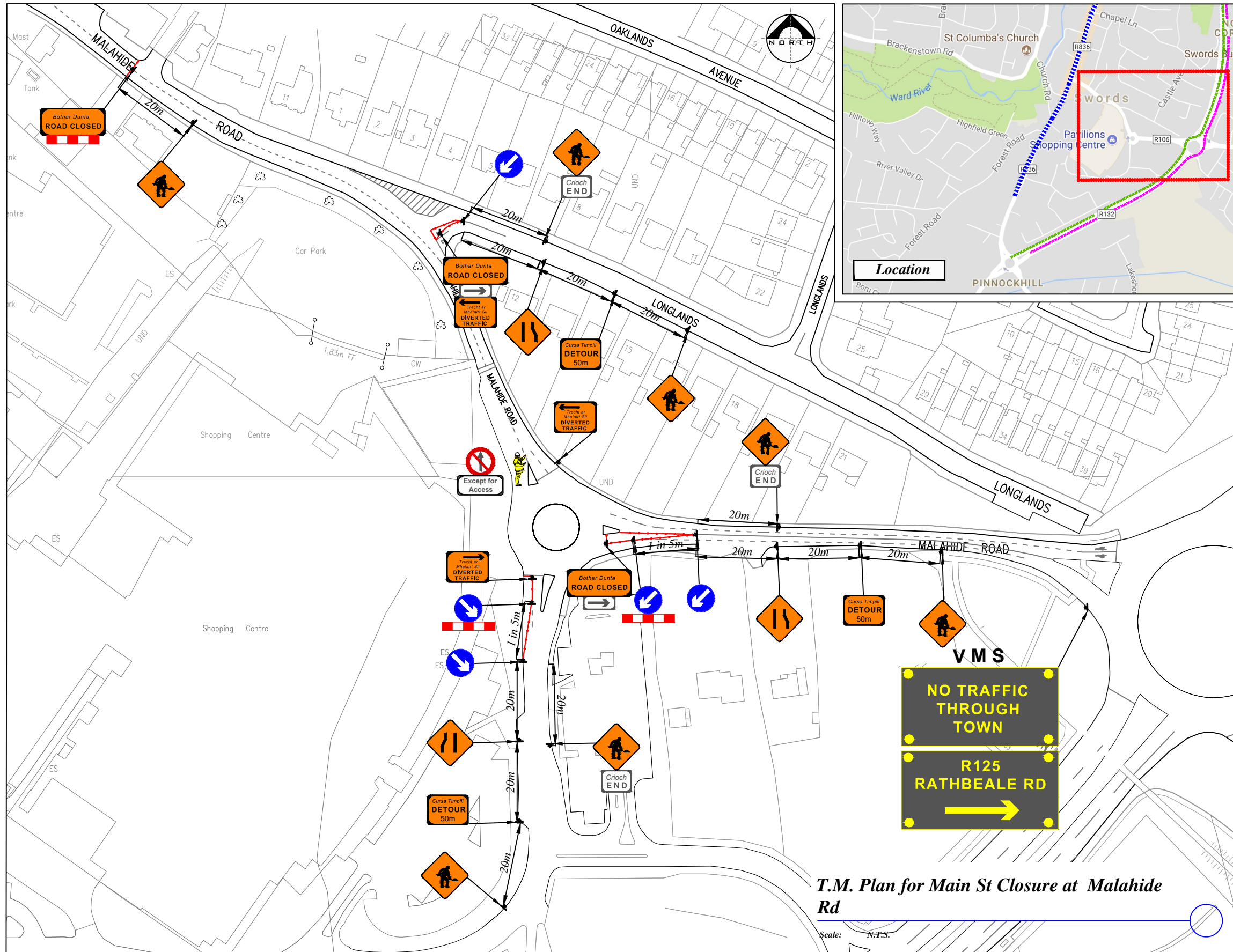
- Note:**
- All signs to comply with Chapter 8 of the "Traffic Signs Manual"-Guidance Document.
 - All Traffic Management to be carried out in accordance with Chapter 8 of the "Traffic Signs Manual".
 - Detailed Risk Assessment to be carried out prior to the installation of Traffic Management System.
 - The Contractor shall be responsible for providing all required ramp access to all changes in road surface level where traffic runs on a temporary surface and also for cycle/pedestrian ramps where footpath, cycle paths or any surface which has a level discontinuity as a result of the works.
 - Exact sign positions to be agreed on site.
 - All safety zones to be maintained at all times.
 - All affected Parties and An Garda Siochana to be notified prior to works commencing.
 - Signs to be positioned so as not to cause an obstruction to other road users.
 - All delineation devices should be designed in accordance with IS EN 13422.
 - All signage shall be per Tables 8.2.2.2- 8.2.2.9 of the Chapter 8 "Traffic Signs Manual"
 - Safety barrier to be in accordance with IS EN 1317.
 - "End of Roadworks" sign placed 20m to 50m from end of works area.
 - Road Closures to be Manned.

T.M. Plan for Dublin Road Closure at Pinnock Hill Roundabout

Scale: N.T.S.



Rev:	Description:	Date:	Job Details:	Drawing:	Dwg no:
			Proposed Traffic Management Plan for St Patrick's Day Parade in Swords 2025	T.M. Plan for Dublin Road Closure at Pinnock Hill Roundabout	02
			Sheet:	Drawn By:	Rev:
			CAD File ref.:	DM	
				Date:	Scale:
				January 2025	As Shown



LEGEND

- Sign Location
- Event Route
- Diversion Routes
- Traffic Cones
- VMS Variable Message Sign
- TMO - Traffic Management Operative

Works TTM type:	Static Type A				
	Design Type A: >12h				
Design Parameters:	LV-1 (I)	LV-1 (III)	LV-1 (IV)	LV-2 (I)	LV-2 (II)
1. Minimum Sign Size mm	450	600	600	600	750
2. Statutory Speed of the Road	30km/h	50	60	80	100
3. Distance between Advance Signs	10m	20m	20m	120m	200m
4. Number of Advance Signs	1 (<12h) 2 (>12h)	2	3 (<12h) 2 (>12h)	3 (<12h) 4 (>12h)	3 (<12h) 4 (>12h)
5. Minimum Visibility of Signs	25m	50m	60m	90m	120m
6. Longitudinal Safety Zone	0.5m	5m	15m	45m	60m
7. Lateral Safety Zone	0.5m	0.5m	0.5m	1.2m	1.2m
8. Leading Taper	1in1m	1in5m	1in10m	1in40	1in40
9. Maximum at Tapers Cone Space	1m	3m	3m	3m	3m
10. Maximum Longitudinal Cone Space	3m	3m	6m	12m	12m
11. Lane Width (m)	2.5m	3 (2.5)	3 (2.5)	3 m	3 m
12. Two-way Roadway width (m)	5m	5m	5m	-	-

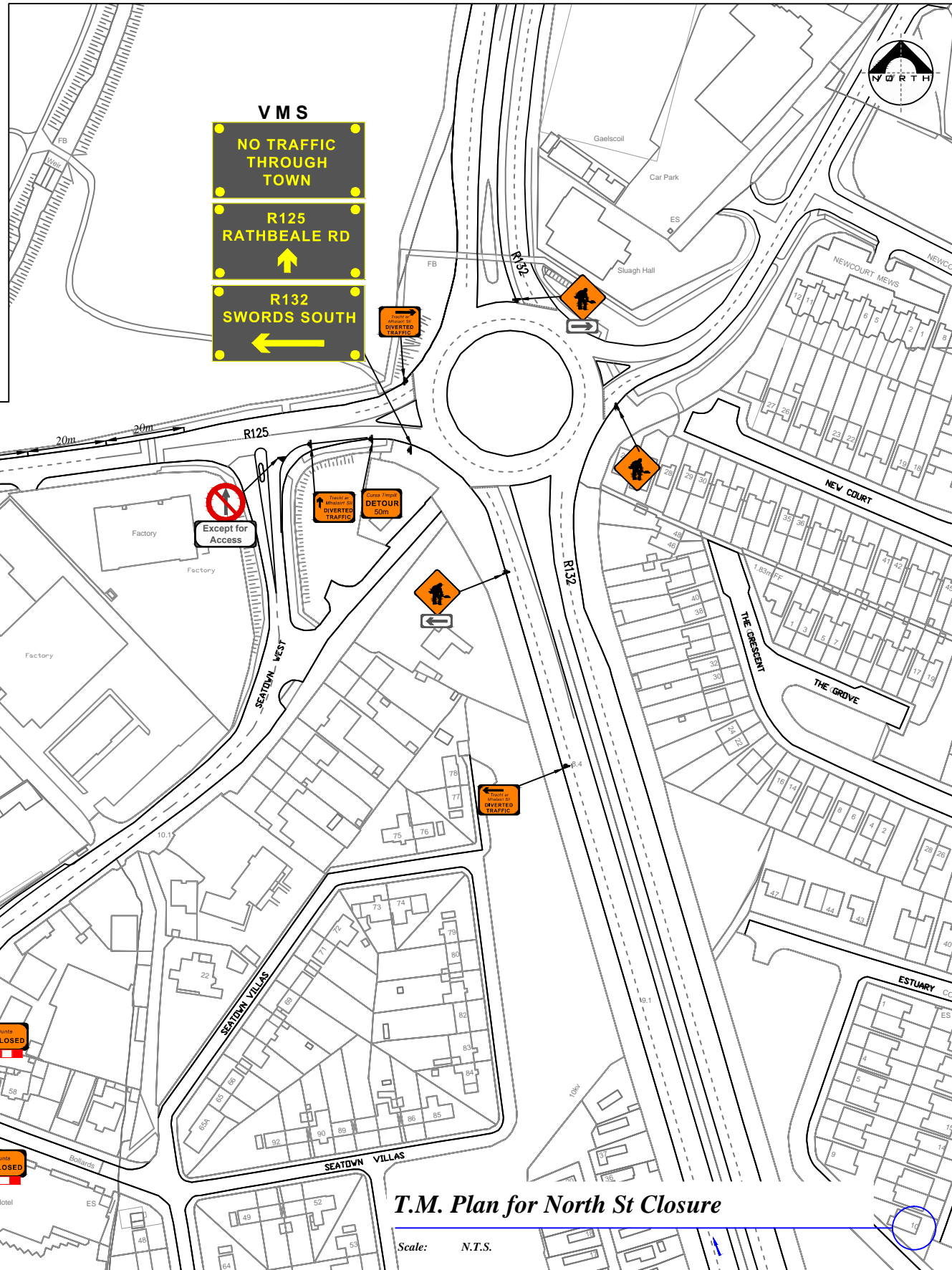
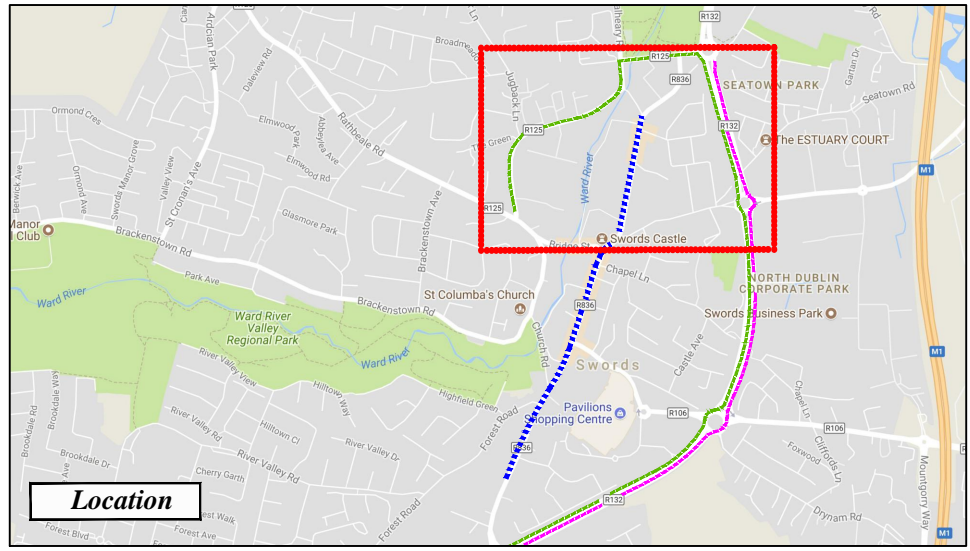
- Note:**
- All signs to comply with Chapter 8 of the "Traffic Signs Manual"-Guidance Document.
 - All Traffic Management to be carried out in accordance with Chapter 8 of the "Traffic Signs Manual".
 - Detailed Risk Assessment to be carried out prior to the installation of Traffic Management System.
 - The Contractor shall be responsible for providing all required ramp access to all changes in road surface level where traffic runs on a temporary surface and also for cycle/pedestrian ramps where footpath, cycle paths or any surface which has a level discontinuity as a result of the works.
 - Exact sign positions to be agreed on site.
 - All safety zones to be maintained at all times.
 - All affected Parties and An Garda Síochána to be notified prior to works commencing.
 - Signs to be positioned so as not to cause an obstruction to other road users.
 - All delineation devices should be designed in accordance with IS EN 13422.
 - All signage shall be per Tables 8.2.2.2- 8.2.2.9 of the Chapter 8 "Traffic Signs Manual"
 - Safety barrier to be in accordance with IS EN 1317.
 - "End of Roadworks" sign placed 20m to 50m from end of works area.
 - Road Closures to be Manned.

T.M. Plan for Main St Closure at Malahide Rd

Scale: N.T.S.



Rev:	Description:	Date:	Job Details:	Drawing:	Dwg no:
			Proposed Traffic Management Plan for St Patrick's Day Parade in Swords 2025	TMP for Main St Closure at Malahide Rd	03
			Sheet:	Drawn By:	Rev:
			CAD File ref.:	DM	
				Date:	Scale:
				January 2025	As Shown



T.M. Plan for North St Closure

Scale: N.T.S.

LEGEND

- Sign Location
- Event Route
- Diversion Routes
- Traffic Cones
- VMS Variable Message Sign
- TMO - Traffic Management Operative

Works TTM type:	Static Type A				
	Design Type A: >12h				
Design Parameters:	LV-1 (I)	LV-1 (III)	LV-1 (IV)	LV-2 (I)	LV-2 (II)
1. Minimum Sign Size mm	450	600	600	600	750
2. Statutory Speed of the Road	30km/h	50	60	80	100
3. Distance between Advance Signs	10m	20m	20m	120m	200m
4. Number of Advance Signs	1 (<12h) 2 (>12h)	2	3 (<12h) 2 (>12h)	3 (<12h) 4 (>12h)	3 (<12h) 4 (>12h)
5. Minimum Visibility of Signs	25m	50m	60m	90m	120m
6. Longitudinal Safety Zone	0.5m	5m	15m	45m	60m
7. Lateral Safety Zone	0.5m	0.5m	0.5m	1.2m	1.2m
8. Leading Taper	1in1m	1in5m	1in10m	1in40	1in40
9. Maximum at Tapers Cone Space	1m	3m	3m	3m	3m
10. Maximum Longitudinal Cone Space	3m	3m	6m	12m	12m
11. Lane Width (m)	2.5m	3 (2.5)	3 (2.5)	3 m	3 m
12. Two-way Roadway width (m)	5m	5m	5m	-	-

- Note:**
- All signs to comply with Chapter 8 of the "Traffic Signs Manual"-Guidance Document.
 - All Traffic Management to be carried out in accordance with Chapter 8 of the "Traffic Signs Manual".
 - Detailed Risk Assessment to be carried out prior to the installation of Traffic Management System.
 - The Contractor shall be responsible for providing all required ramp access to all changes in road surface level where traffic runs on a temporary surface and also for cycle/pedestrian ramps where footpath, cycle paths or any surface which has a level discontinuity as a result of the works.
 - Exact sign positions to be agreed on site.
 - All safety zones to be maintained at all times.
 - All affected Parties and An Garda Síochána to be notified prior to works commencing.
 - Signs to be positioned so as not to cause an obstruction to other road users.
 - All delineation devices should be designed in accordance with IS EN 13422.
 - All signage shall be per Tables 8.2.2.2- 8.2.2.9 of the Chapter 8 "Traffic Signs Manual"
 - Safety barrier to be in accordance with IS EN 1317.
 - "End of Roadworks" sign placed 20m to 50m from end of works area.
 - Road Closures to be Manned.



Rev:	Description:	Date:	Job Details: Proposed Traffic Management Plan for St Patrick's Day Parade in Swords 2025	Drawing: TMP for North St Closure	Dwg no: 04
			Sheet:	Drawn By: DM	Rev:
			CAD File ref.:	Date: January 2025	Scale: As Shown